

201200074955  
 Filed for Record in  
 HOLMES COUNTY, OH  
 ANITA HALL, COUNTY RECORDER  
 01-13-2012 At 11:35 am.  
 PLAT MED 43.20  
 OR Book 19 Page 1990 - 1990  
 CR 2312491

201200074955  
 CRITCHFIELD...  
 & JOHNSTON ATTYS  
 HILLERSBURG OH

NORTH BASED ON GPS  
 OBSERVATIONS, OHIO  
 STATE PLANE COORDINATE  
 SYSTEM, NORTH ZONE,  
 GRID TO GROUND

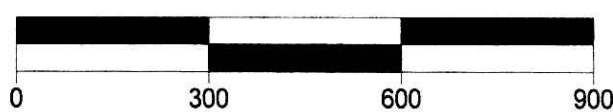
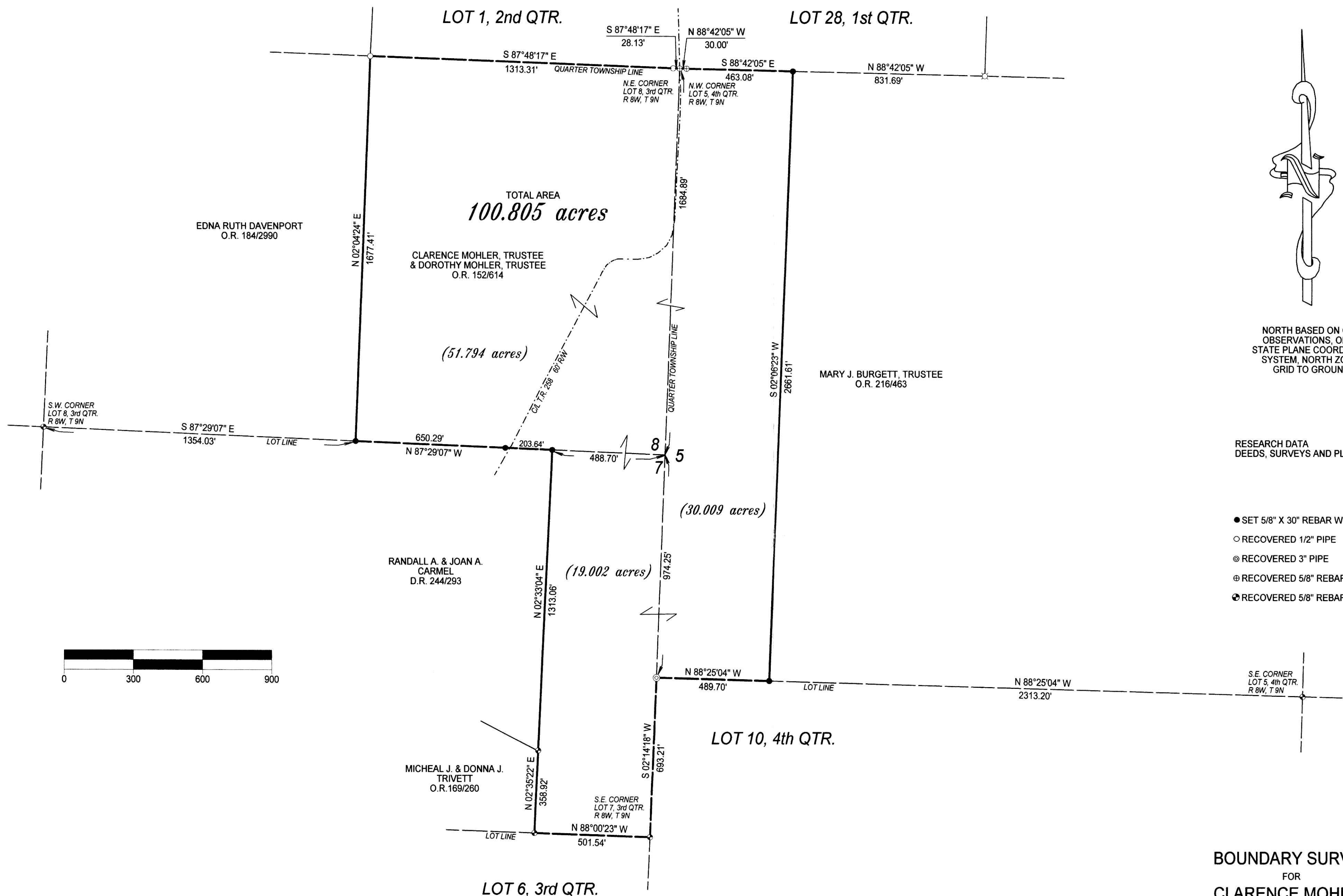
RESEARCH DATA  
 DEEDS, SURVEYS AND PLATS OF RECORD

- SET 5/8" X 30" REBAR WITH PLASTIC CAP
- RECOVERED 1/2" PIPE
- ⊙ RECOVERED 3" PIPE
- ⊕ RECOVERED 5/8" REBAR
- ⊗ RECOVERED 5/8" REBAR WITH PLASTIC CAP

BOUNDARY SURVEY  
 FOR  
 CLARENCE MOHLER  
 IN  
 LOTS 7 & 8, THIRD QUARTER  
 AND  
 LOT 5, FOURTH QUARTER  
 TOWNSHIP 9N, RANGE 8W  
 MONROE TOWNSHIP  
 HOLMES COUNTY  
 OHIO  
 SCALE 1" = 300' FEBRUARY 23, 2011

PLAT APPROVED

1/12/2012



THIS PLAT WAS PREPARED FROM A FIELD SURVEY PERFORMED BY THE UNDERSIGNED AND IS ACCURATE TO THE BEST OF MY KNOWLEDGE.



*R. Scott Johnson*  
 R. SCOTT JOHNSON R.P.S. 6791

PREPARED BY  
**AMERICAN PRECISION SURVEYING**  
 450 S. FOURTH ST.  
 COSHOCTON, OHIO  
 740-622-2783