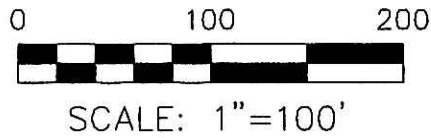


HARDY TOWNSHIP
N.W. QTR. SECTION 4
T-9 N; R-6 W
HOLMES COUNTY, OHIO

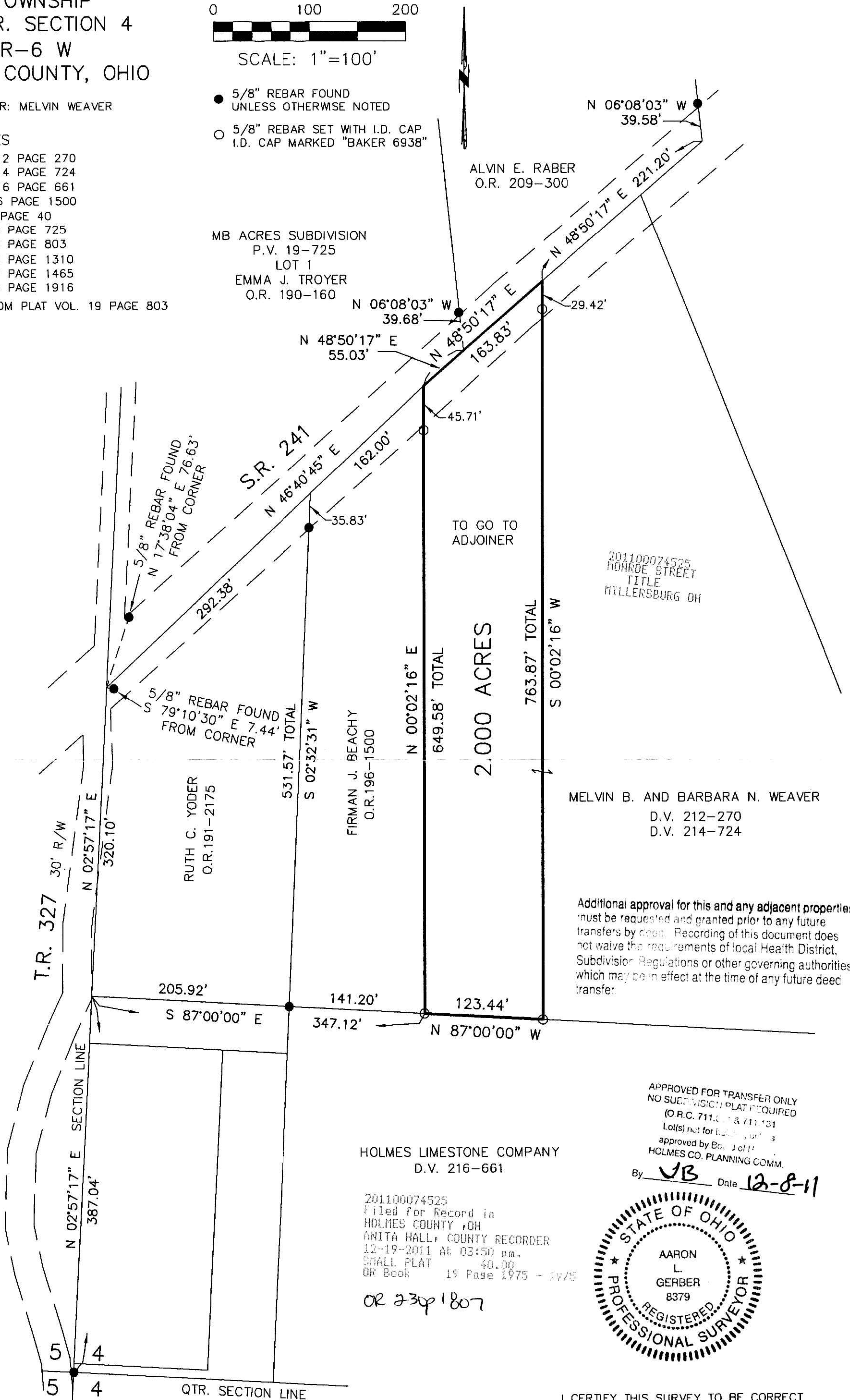
SURVEYED FOR: MELVIN WEAVER

REFERENCES

- DEED VOL. 212 PAGE 270
- DEED VOL. 214 PAGE 724
- DEED VOL. 216 PAGE 661
- O.R. VOL. 196 PAGE 1500
- PLAT VOL. 3 PAGE 40
- PLAT VOL. 19 PAGE 725
- PLAT VOL. 19 PAGE 803
- PLAT VOL. 19 PAGE 1310
- PLAT VOL. 19 PAGE 1465
- PLAT VOL. 19 PAGE 1916
- BEARINGS FROM PLAT VOL. 19 PAGE 803



- 5/8" REBAR FOUND UNLESS OTHERWISE NOTED
- 5/8" REBAR SET WITH I.D. CAP I.D. CAP MARKED "BAKER 6938"



201100074525
HONDE STREET
TITLE
MILLERSBURG OH

MELVIN B. AND BARBARA N. WEAVER
D.V. 212-270
D.V. 214-724

Additional approval for this and any adjacent properties must be requested and granted prior to any future transfers by deed. Recording of this document does not waive the requirements of local Health District, Subdivision Regulations or other governing authorities which may be in effect at the time of any future deed transfer.

APPROVED FOR TRANSFER ONLY
NO SUBDIVISION PLAT REQUIRED
(O.R.C. 711.01 & 711.131
Lot(s) not for local government
approved by Board of
HOLMES CO. PLANNING COMM.
By JB Date 12-8-11

HOLMES LIMESTONE COMPANY
D.V. 216-661

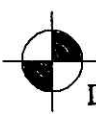
201100074525
Filed for Record in
HOLMES COUNTY, OH
ANITA HALL, COUNTY RECORDER
12-19-2011 At 03:50 pm.
SMALL PLAT 40.00
DR Book 19 Page 1975 - 1975

OR 2301807



I CERTIFY THIS SURVEY TO BE CORRECT TO THE BEST OF MY KNOWLEDGE.

A-L-C
AARON L. GERBER P.S. 8379
DATE: NOV. 17, 2011
ALG/KES
FILE NAME: WORK3-2011\S-534-11\ALG

 DONALD C. BAKER SURVEYING
138 N. CLAY STREET
MILLERSBURG, OHIO 44654
PH. 330-674-4788
FAX 330-674-6027

PLAT APPROVED

12/1/2011