



SCALE: 1"=100'

- 5/8" REBAR FOUND UNLESS OTHERWISE NOTED
- 5/8" REBAR SET WITH I.D. CAP I.D. CAP MARKED "BAKER 6938"

MECHANIC TOWNSHIP
N.E. QTR. SECTION 11
T-8 N; R-7 W
HOLMES COUNTY, OHIO

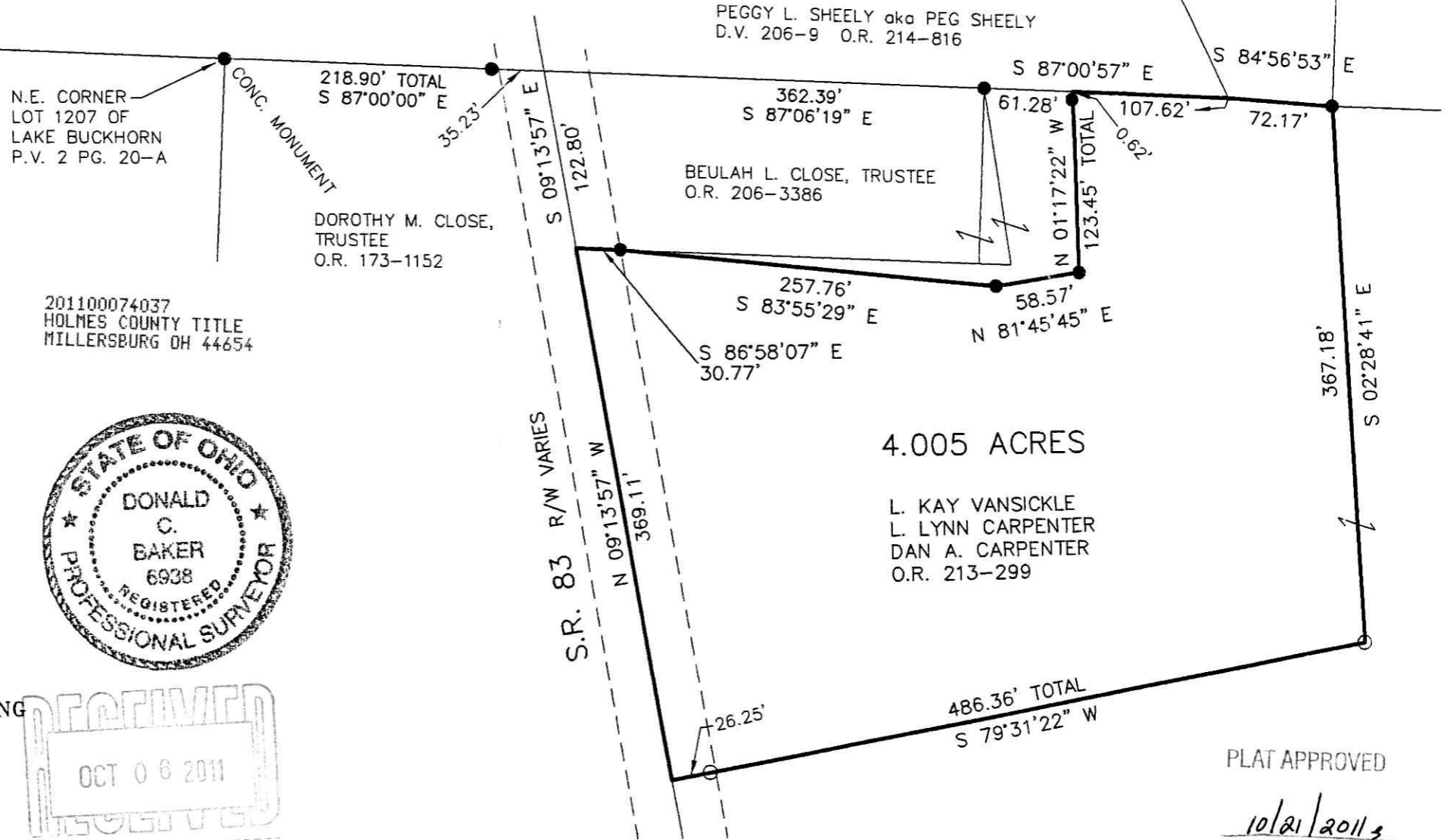
SURVEYED FOR: LARRY VANSICKLE

201100074037
Filed for Record in
HOLMES COUNTY, OH
ANITA HALL, COUNTY RECORDER
11-10-2011 At 01:32 pm.
SMALL PLAT 40.00
OR Book 19 Page 1952 - 1952
ORV 229 page 2671

PEGGY L. SHEELY
O.R. 221-2516

REFERENCES

- O.R. VOL. 173 PAGE 1152
- O.R. VOL. 213 PAGE 299
- O.R. VOL. 221 PAGE 2516
- O.R. VOL. 206 PAGE 3386
- PLAT VOL. 4 PAGE 150
- PLAT VOL. 8 PAGE 430
- BEARINGS FROM PLAT VOL. 19 PAGE 107



N.E. CORNER
LOT 1207 OF
LAKE BUCKHORN
P.V. 2 PG. 20-A

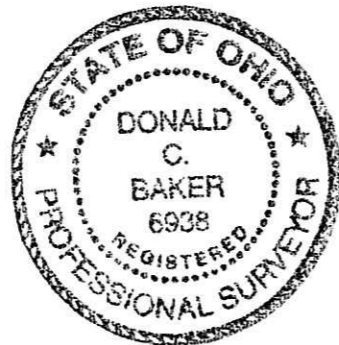
CONC. MONUMENT
218.90' TOTAL
S 87°00'00" E

DOROTHY M. CLOSE,
TRUSTEE
O.R. 173-1152

PEGGY L. SHEELY aka PEG SHEELY
D.V. 206-9 O.R. 214-816

BEULAH L. CLOSE, TRUSTEE
O.R. 206-3386

201100074037
HOLMES COUNTY TITLE
MILLERSBURG OH 44654



I CERTIFY THIS SURVEY TO BE CORRECT
TO THE BEST OF MY KNOWLEDGE.

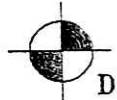
Donald C. Baker

DONALD C. BAKER P.S. 6938

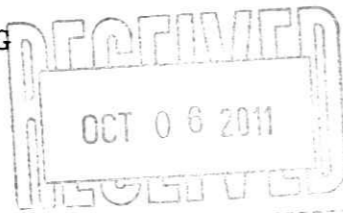
DATE: SEPTEMBER 9, 2011

FDB\CJG

FILE NAME: WORK4\S-417-11\DB-MD



DONALD C. BAKER SURVEYING
138 N. CLAY STREET
MILLERSBURG, OHIO 44654
PH. 330-674-4788
FAX 330-674-6027



4.005 ACRES

L. KAY VANSICKLE
L. LYNN CARPENTER
DAN A. CARPENTER
O.R. 213-299

PLAT APPROVED

10/21/2011