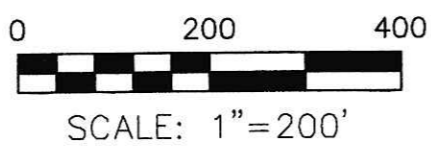


PRAIRIE TOWNSHIP
N.E., S.E. & S.W. QTRS. SECTION 17
T-13 N; R-13 W
HOLMES COUNTY, OHIO

SURVEYED FOR: JOHN COBLENTZ

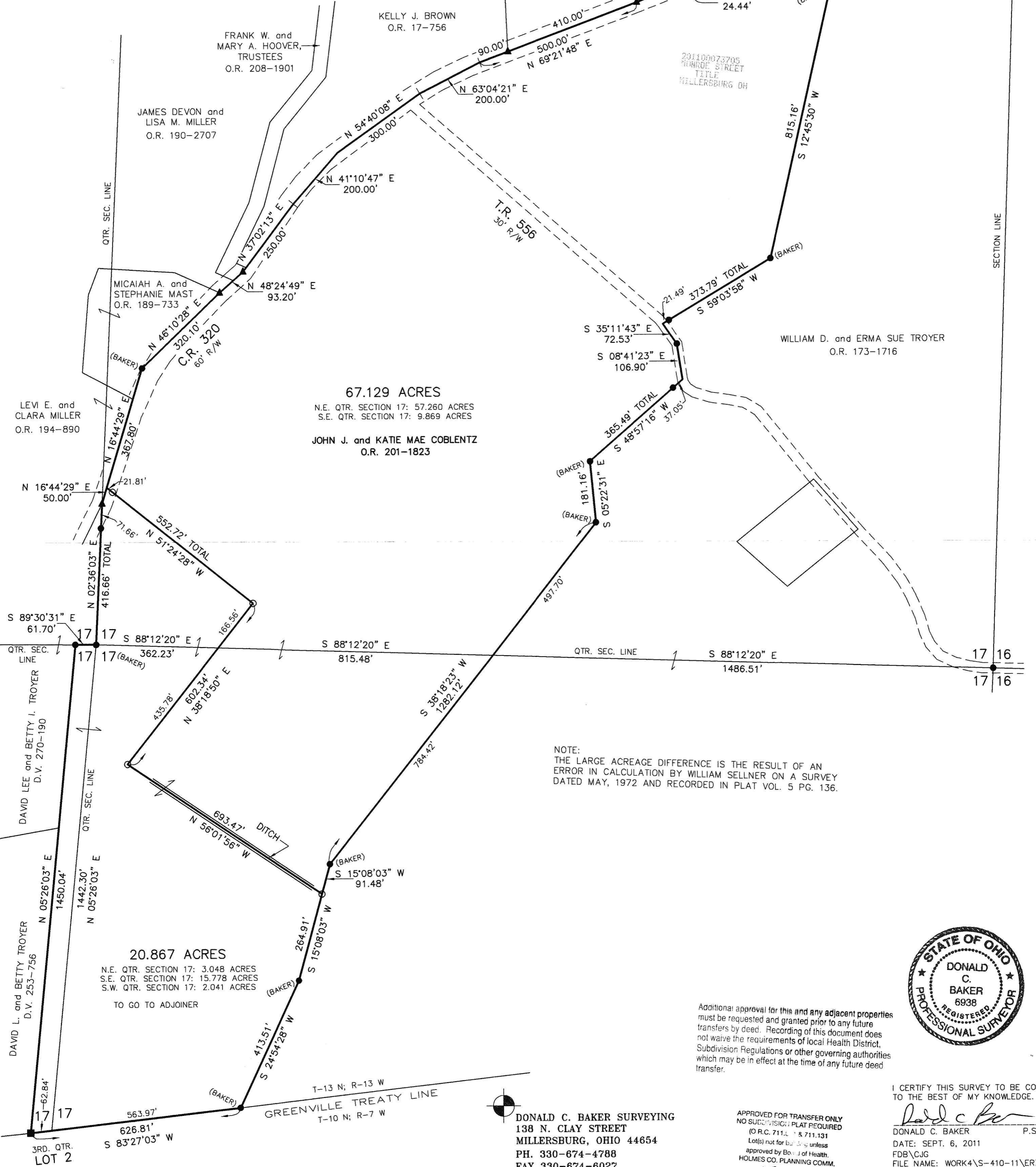
REFERENCES

- DEED VOL. 253 PAGE 756
- DEED VOL. 270 PAGE 190
- DEED VOL. 280 PAGE 193
- O.R. VOL. 173 PAGE 1716
- O.R. VOL. 201 PAGE 1823
- PLAT VOL. 5 PAGE 136
- PLAT VOL. 13 PAGE 47
- PLAT VOL. 14 PAGE 874
- PLAT VOL. 16 PAGE 15
- PLAT VOL. 19 PAGES 112 & 912
- BEARINGS FROM PLAT VOL. 19 PAGE 112



- STONE FOUND
- P.K. NAIL FOUND
- ▲ R.R. SPIKE FOUND
- 5/8" REBAR FOUND UNLESS OTHERWISE NOTED
- 5/8" REBAR SET WITH I.D. CAP I.D. CAP MARKED "BAKER 6938"

Instrument 201100073705 OR Book Page 19 1928
201100073705 Filed for Record in HOLMES COUNTY, OH ANITA HALL, COUNTY RECORDER 10-21-2011 AC 11:31 AM PLAT HFD OF Book 19 Page 1928 - 1928
CR 229 Pgs 966 + 970



67.129 ACRES
N.E. QTR. SECTION 17: 57.260 ACRES
S.E. QTR. SECTION 17: 9.869 ACRES
JOHN J. and KATIE MAE COBLENTZ
O.R. 201-1823

20.867 ACRES
N.E. QTR. SECTION 17: 3.048 ACRES
S.E. QTR. SECTION 17: 15.778 ACRES
S.W. QTR. SECTION 17: 2.041 ACRES
TO GO TO ADJOINER

NOTE:
THE LARGE ACREAGE DIFFERENCE IS THE RESULT OF AN ERROR IN CALCULATION BY WILLIAM SELLNER ON A SURVEY DATED MAY, 1972 AND RECORDED IN PLAT VOL. 5 PG. 136.



Additional approval for this and any adjacent properties must be requested and granted prior to any future transfers by deed. Recording of this document does not waive the requirements of local Health District, Subdivision Regulations or other governing authorities which may be in effect at the time of any future deed transfer.

DONALD C. BAKER SURVEYING
138 N. CLAY STREET
MILLERSBURG, OHIO 44654
PH. 330-674-4788
FAX 330-674-6027

APPROVED FOR TRANSFER ONLY
NO SUBDIVISION PLAT REQUIRED
(O.R.C. 711.01 & 711.131)
Lot(s) not for B.S. unless approved by Board of Health, HOLMES CO. PLANNING COMM.
By *CB* Date 9-28-11

I CERTIFY THIS SURVEY TO BE CORRECT TO THE BEST OF MY KNOWLEDGE.
Donald C. Baker
DONALD C. BAKER P.S. 6938
DATE: SEPT. 6, 2011
FDB\CJG
FILE NAME: WORK4\S-410-11\ERZ

PLAT APPROVED
alac/2011