

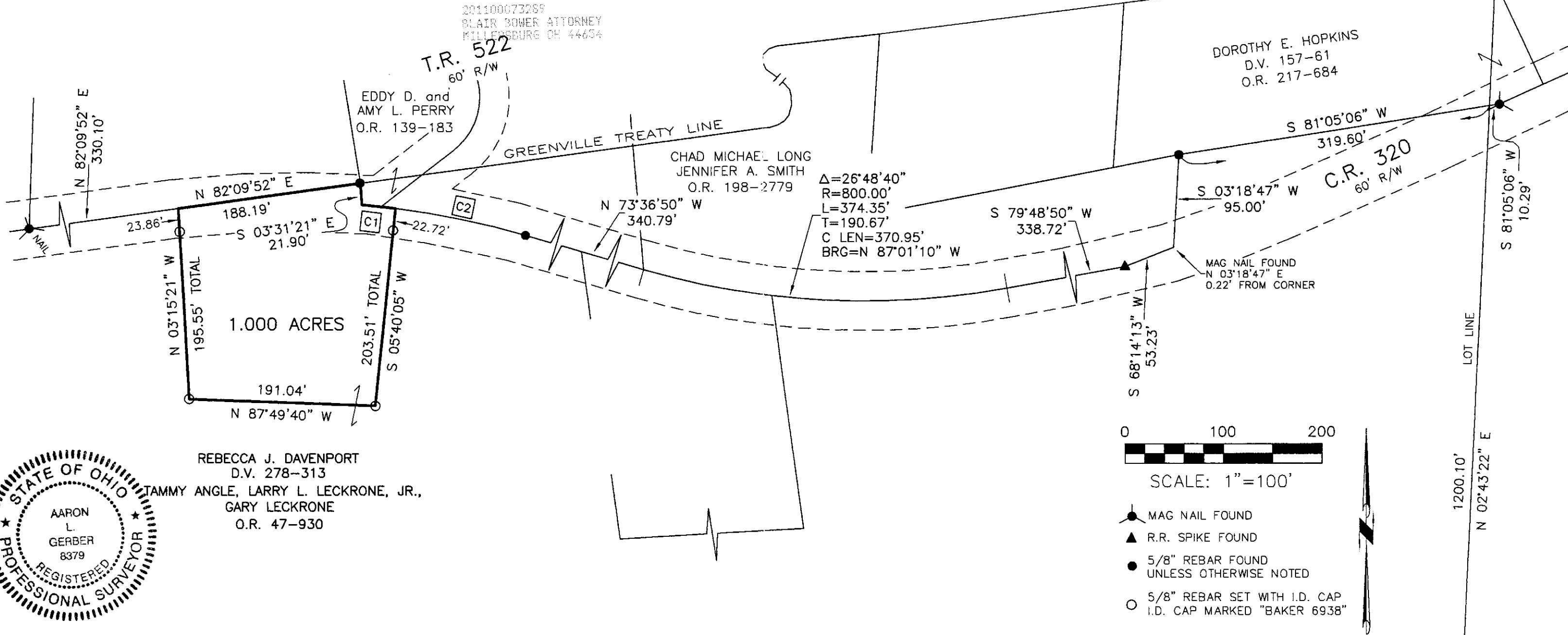
MONROE TOWNSHIP  
 1ST. QTR., LOT 21  
 T-9 N; R-8 W  
 HOLMES COUNTY, OHIO

SURVEYED FOR: LEE MILLER c/o ATTY. BLAIR BOWER

REFERENCES

- O.R. VOL. 47 PAGE 930
- O.R. VOL. 135 PAGE 5
- O.R. VOL. 139 PAGE 183
- O.R. VOL. 217 PAGE 684
- PLAT VOL. 8 PAGE 841
- PLAT VOL. 11 PAGE 4
- PLAT VOL. 15 PAGE 130
- PLAT VOL. 18 PAGE 497
- BEARINGS FROM PLAT VOL. 18 PAGE 497

201100073289  
 Filed for Record in  
 HOLMES COUNTY, OH  
 ANITA HALL, COUNTY RECORDER  
 09-23-2011 At 01:13 pm.  
 SMALL PLAT 40.00  
 OR Book 19 Page 1910 - 1910  
 CRV 228 pg 2147



I CERTIFY THIS SURVEY TO BE CORRECT  
 TO THE BEST OF MY KNOWLEDGE.

*A.L.G.*  
 AARON L. GERBER P.S. 8379  
 DATE: AUG. 8, 2011  
 ALG\KES-CJG  
 FILE NAME: WORK3\S-339A-11\ERZ

CURVE	DELTA ANGLE	RADIUS	ARC LENGTH	TANGENT	CHORD LENGTH	CHORD BEARING
C1	02°18'03"	860.00'	34.53'	17.27'	34.53'	S 83°44'47" E
C2	08°58'55"	860.00'	134.82'	67.55'	134.68'	S 78°06'18" E

DONALD C. BAKER SURVEYING  
 138 N. CLAY STREET  
 MILLERSBURG, OHIO 44654  
 PH. 330-674-4788  
 FAX 330-674-6027

21 8  
 (SHAMP)  
 PLAT APPROVED

*8/26/2011*