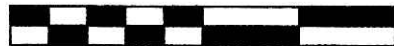


RETRACEMENT SURVEY OF O.R. 227-997  
 LAKEVIEW PARK ON-ODELL-LAKE SUBDIVISION No. 1  
 LOTS 17 & 18

WASHINGTON TOWNSHIP  
 S.W. QTR. SECTION 25  
 T-20 N; R-15 W  
 HOLMES COUNTY, OHIO

201100073124  
 HEARTLAND TITLE  
 MILLERSBURG OH 44654



SCALE: 1"=40'

SURVEYED FOR: HEARTLAND TITLE CO.

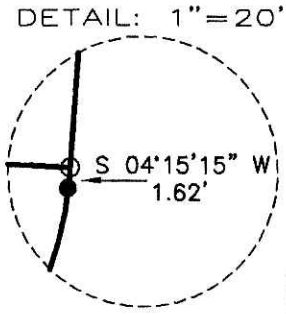
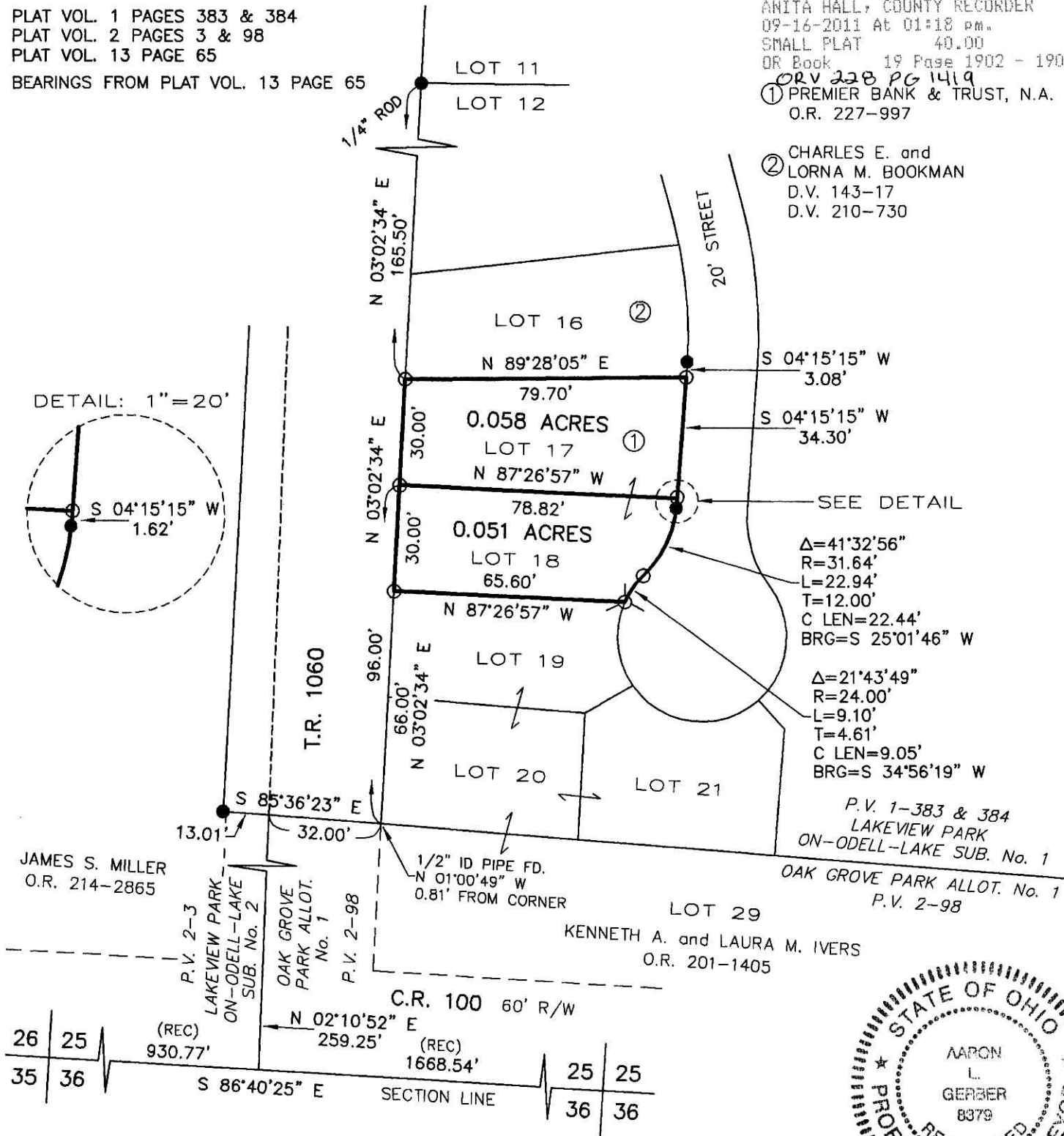
REFERENCES

- DEED VOL. 210 PAGE 730
- O.R. VOL. 201 PAGE 1405
- O.R. VOL. 214 PAGE 2865
- O.R. VOL. 227 PAGE 997
- PLAT VOL. 1 PAGES 383 & 384
- PLAT VOL. 2 PAGES 3 & 98
- PLAT VOL. 13 PAGE 65
- BEARINGS FROM PLAT VOL. 13 PAGE 65

- 5/8" REBAR FOUND UNLESS OTHERWISE NOTED
- DRILL HOLE IN CONC. SET
- 5/8" REBAR SET WITH I.D. CAP I.D. CAP MARKED "BAKER 6938"

201100073124  
 Filed for Record in  
 HOLMES COUNTY, OH  
 ANITA HALL, COUNTY RECORDER  
 09-16-2011 At 01:18 pm.  
 SMALL PLAT 40.00  
 OR Book 19 Page 1902 - 1902  
 ORV 228 PG 1419  
 ① PREMIER BANK & TRUST, N.A.  
 O.R. 227-997

② CHARLES E. and  
 LORNA M. BOOKMAN  
 D.V. 143-17  
 D.V. 210-730



I CERTIFY THIS SURVEY TO BE CORRECT TO THE BEST OF MY KNOWLEDGE.

A-L-G-L

AARON L. GERBER P.S. 8379  
 DATE: AUG. 25, 2011  
 ALG\CJG  
 FILE NAME: WORK4\S-397-11\ERZ

DONALD C. BAKER SURVEYING  
 138 N. CLAY STREET  
 MILLERSBURG, OHIO 44654  
 PH. 330-674-4788  
 FAX 330-674-6027

PLAT APPROVED

9/13/2011