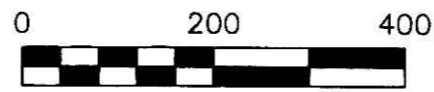


APPROVED FOR TRANSFER ONLY  
 NO SUBDIVISION PLAT REQUIRED  
 (O.R.C. 711.001 & 711.131)  
 Lot(s) not for building unless  
 approved by Board of Health,  
 HOLMES CO. PLANNING COMM.

HARDY TOWNSHIP  
 3RD. QTR., LOT 21  
 S.E. QTR. SECTION 23  
 T-9 N; R-7 W  
 HOLMES COUNTY, OHIO

SURVEYED FOR:  
 R & E UHL FAMILY FARM, LLC



SCALE: 1"=200'

- STONE FOUND
- 5/8" REBAR FOUND UNLESS OTHERWISE NOTED
- △ R.R. SPIKE SET
- 5/8" REBAR SET WITH I.D. CAP I.D. CAP MARKED "BAKER 6938"

Instrument 201000067433 OR  
 Book Page 19 1735

201000067433  
 Filed for Record in  
 HOLMES COUNTY, OH  
 ANITA HALL, COUNTY RECORDER  
 08-16-2010 At 03:53 pm.  
 PLAT MED 43.20  
 OR Book 19 Page 1735 - 1735  
 CR 220971

201000067433  
 HOLMES COUNTY TITLE  
 MILLERSBURG OH 44654

REFERENCES

- O.R. VOL. 64 PAGE 637
- O.R. VOL. 198 PAGE 2886
- O.R. VOL. 66 PAGE 43
- PLAT VOL. 17 PAGE 738
- PLAT VOL. 13 PAGE 162
- PLAT VOL. 15 PAGE 44
- BEARINGS FROM PLAT VOL. 17 PAGE 738



PLAT APPROVED

7/19/2010