

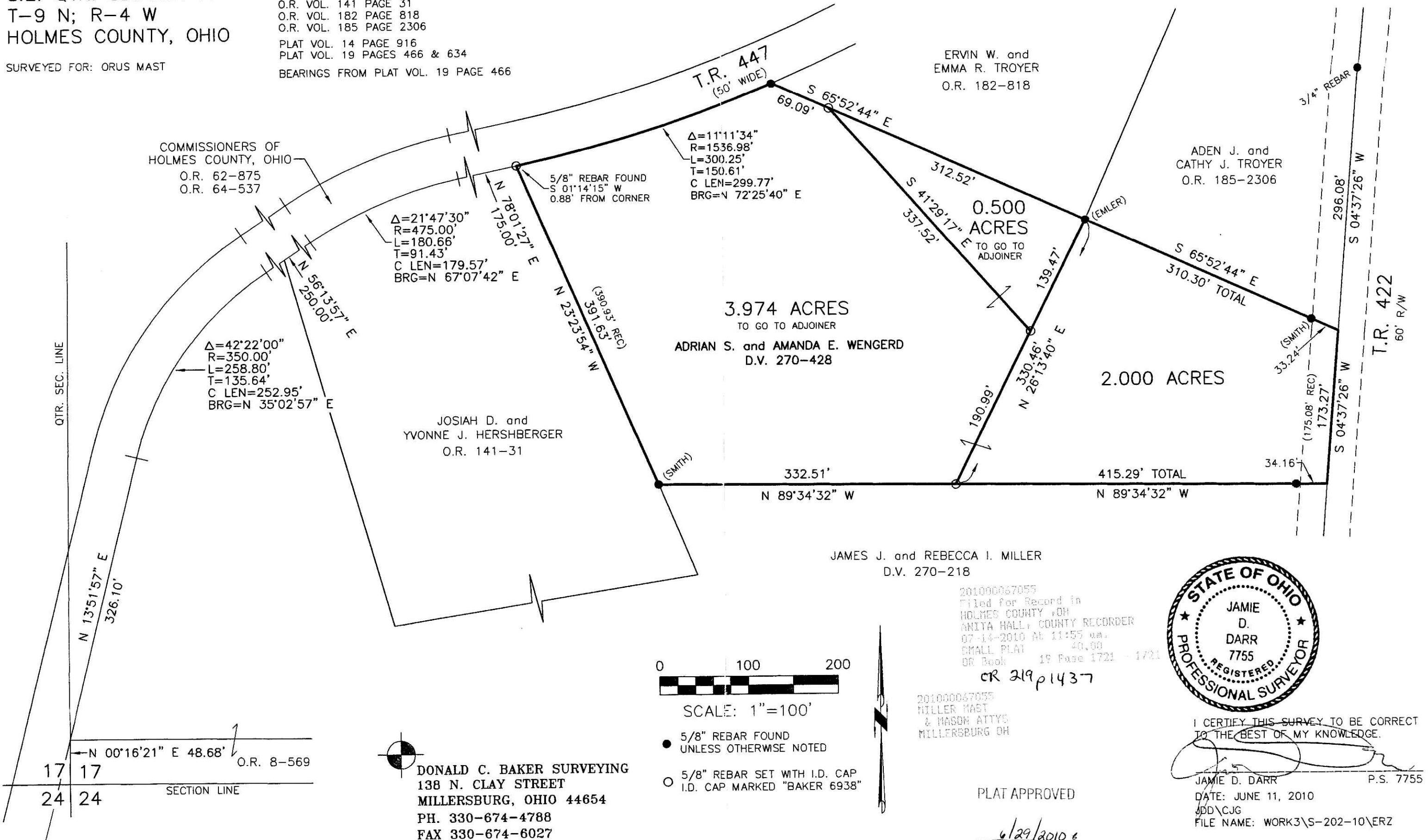
WALNUT CREEK TOWNSHIP
S.E. QTR. SECTION 17
T-9 N; R-4 W
HOLMES COUNTY, OHIO

SURVEYED FOR: ORUS MAST

REFERENCES

DEED VOL. 270 PAGES 218 & 428
O.R. VOL. 141 PAGE 31
O.R. VOL. 182 PAGE 818
O.R. VOL. 185 PAGE 2306
PLAT VOL. 14 PAGE 916
PLAT VOL. 19 PAGES 466 & 634
BEARINGS FROM PLAT VOL. 19 PAGE 466

Instrument 201000067055 OR Book Page 19 1721



DONALD C. BAKER SURVEYING
138 N. CLAY STREET
MILLERSBURG, OHIO 44654
PH. 330-674-4788
FAX 330-674-6027