

RETRACEMENT SURVEY
 PRAIRIE TOWNSHIP
 S.E. QTR. SECTION 7
 T-13 N; R-13 W
 HOLMES COUNTY, OHIO

SURVEYED FOR: SAM ANDERSON

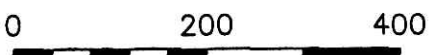
200900064620
 Filed for Record in
 HOLMES COUNTY OH
 ANITA HALL
 12-31-2009 At 09:51 am.
 SMALL PLAT 40.00
 OR Book 19 Page 1623 - 1623
 ORV 215 page 2843

REFERENCES

- O.R. VOL. 20 PAGE 508
- O.R. VOL. 27 PAGE 920
- O.R. VOL. 201 PAGE 2685
- PLAT VOL. 14 PAGES 902 & 970
- PLAT VOL. 17 PAGE 31

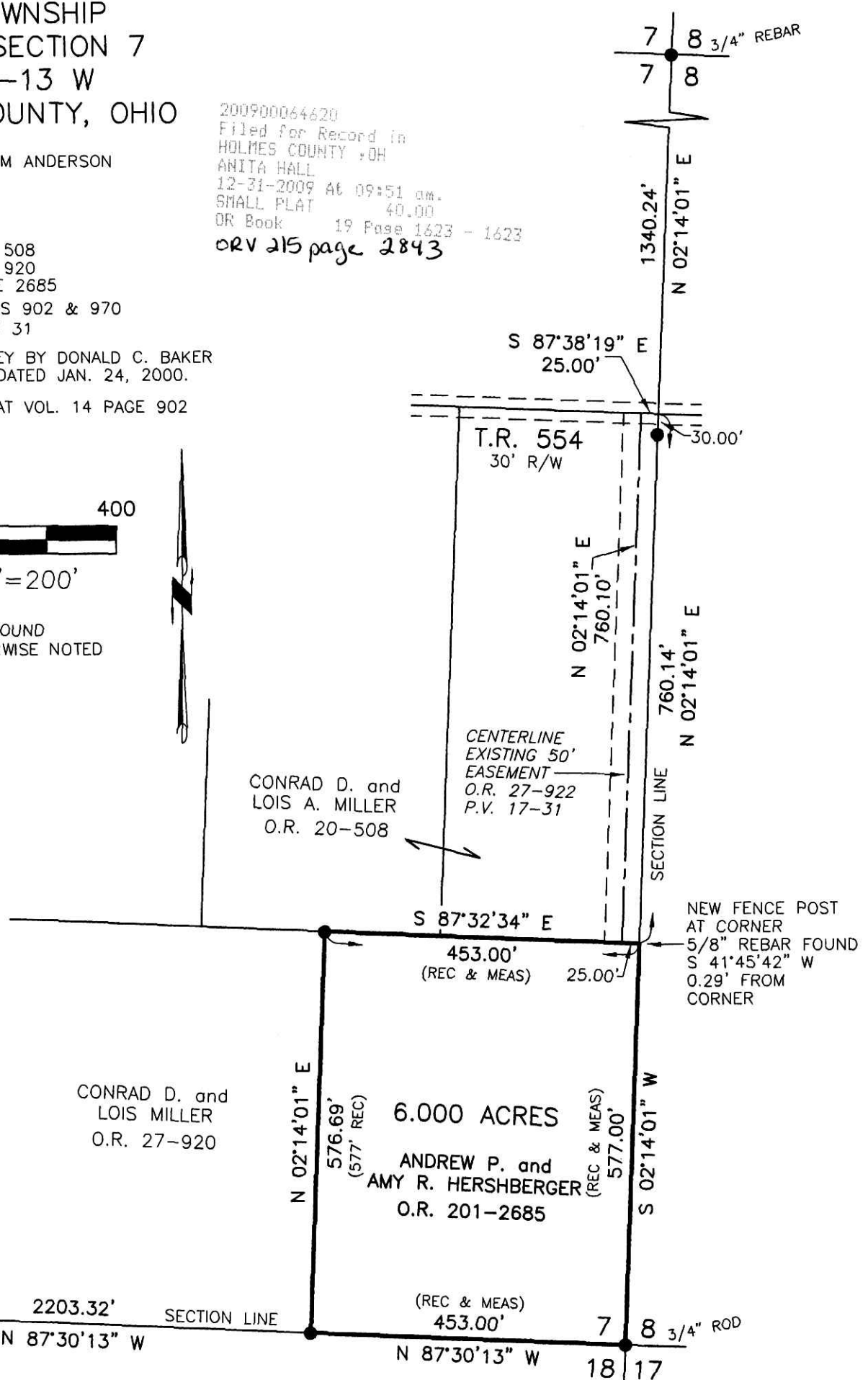
UNRECORDED SURVEY BY DONALD C. BAKER
 OF 16.884 ACRES DATED JAN. 24, 2000.

BEARINGS FROM PLAT VOL. 14 PAGE 902

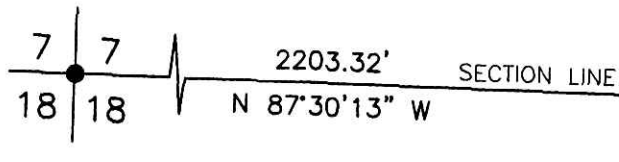


SCALE: 1"=200'

● 5/8" REBAR FOUND
 UNLESS OTHERWISE NOTED



NEW FENCE POST
 AT CORNER
 5/8" REBAR FOUND
 S 41°45'42" W
 0.29' FROM
 CORNER



APPROVED FOR TRANSFER ONLY
 NO SUBDIVISION PLAT REQUIRED
 (O.R.C. 711.06 & 711.131
 Lot(s) not for building unless
 approved by Board of Health.
 HOLMES CO. PLANNING COMM.

By DB Date 12-28-09

200900064620
 MILLER MAST & MASON LTD
 MILLERSBURG OH 44654

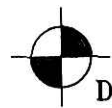
PLAT APPROVED

12/23/2009

I CERTIFY THIS SURVEY TO BE CORRECT
 TO THE BEST OF MY KNOWLEDGE.

Donald C. Baker

DONALD C. BAKER P.S. 6938
 DATE: DEC. 17, 2009
 FDB/KES
 FILE NAME: WORK3\S-593-09\ERZ



DONALD C. BAKER SURVEYING
 138 N. CLAY STREET
 MILLERSBURG, OHIO 44654
 PH. 330-674-4788
 FAX 330-674-6027