

KILLBUCK TOWNSHIP
 S.W. QTR. SECTION 21
 S.E. QTR. SECTION 22
 T-8 N; R-8 W
 HOLMES COUNTY, OHIO

SURVEYED FOR: PAT MELLOR

REFERENCES

O.R. VOL. 170 PAGE 2013
 O.R. VOL. 177 PAGE 44
 PLAT VOL. 16 PAGES 175 & 176
 BEARINGS FROM PLAT VOL. 17 PAGE 580

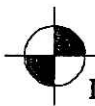
LARRY D. and KATHRYNE L. MELLOR,
 CO-TRUSTEES
 O.R. 170-2013

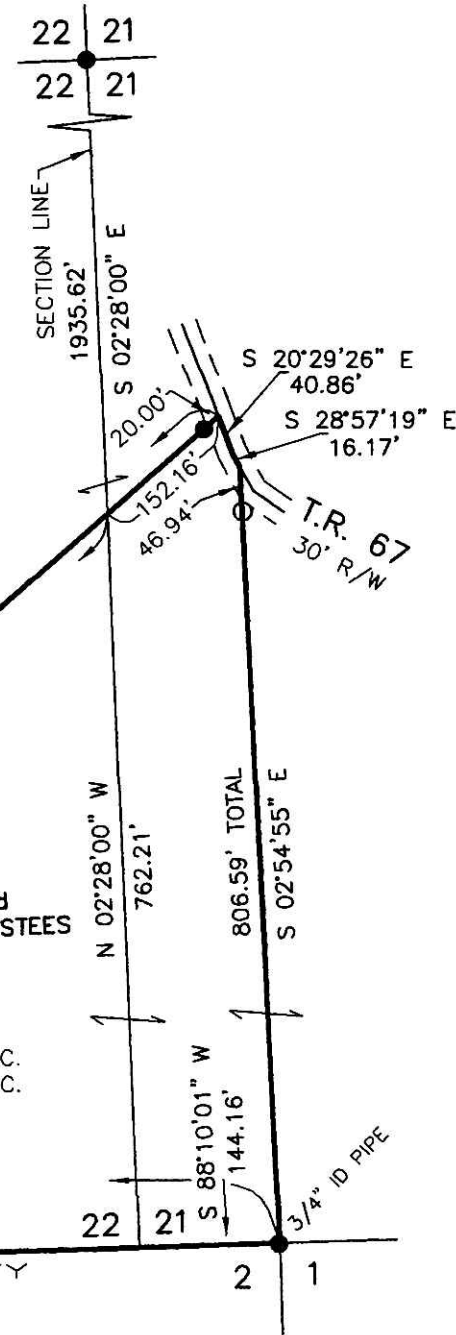
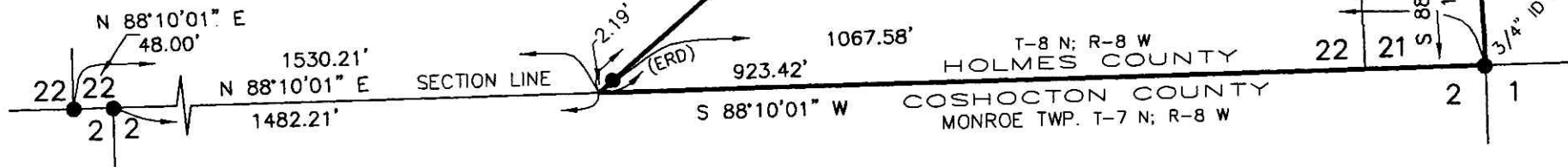
MYRON WAYNE and
 LINDA LEE YOUNG, TRUSTEES
 O.R. 177-44

10.712 ACRES

S.W. QTR. SECTION 21: 2.633 AC.
 S.E. QTR. SECTION 22: 8.079 AC.

T-8 N; R-8 W
 HOLMES COUNTY
 COSHOCTON COUNTY
 MONROE TWP. T-7 N; R-8 W

 DONALD C. BAKER SURVEYING
 138 N. CLAY STREET
 MILLERSBURG, OHIO 44654
 PH. 330-674-4788
 FAX 330-674-6027



PLAT APPROVED

11/25/2009

Instrument 200900064583 OR Book Page 19 1620

200900064583
 Filed for Record in
 HOLMES COUNTY, OH
 ANITA HALL
 12-30-2009 At 10:53 am.
 SMALL PLAT 40.00
 OR Book 19 Page 1620 - 1620
 CRV 215 Page 2642 400

0 200 400



SCALE: 1"=200'

- 5/8" REBAR FOUND UNLESS OTHERWISE NOTED
- 5/8" REBAR SET WITH I.D. CAP I.D. CAP MARKED "BAKER 6938"

200900064583
 SAMUEL STEINEL ATTORNEY
 MILLERSBURG OH 44654



I CERTIFY THIS SURVEY TO BE CORRECT TO THE BEST OF MY KNOWLEDGE.

Donald C. Baker
 DONALD C. BAKER P.S. 6938
 DATE: NOV. 10, 2009
 FDB/KES
 FILE NAME: WORK4\S-533-09\ERZ