

BERLIN TOWNSHIP
 4TH. QTR., LOT 19
 T-9 N; R-6 W
 HOLMES COUNTY, OHIO

SURVEYED FOR: MERLE RABER

REFERENCES

- O.R. VOL. 125 PAGE 594
- O.R. VOL. 199 PAGE 733
- O.R. VOL. 208 PAGE 1120
- O.R. VOL. 209 PAGE 1209
- PLAT VOL. 4 PAGE 154
- PLAT VOL. 5 PAGE 173
- PLAT VOL. 12 PAGE 331
- PLAT VOL. 13 PAGE 51
- PLAT VOL. 19 PAGES 1118, 1438 & 1473
- BEARINGS FROM PLAT VOL. 19 PAGE 1473

200900064497
 Filed for Record in
 HOLMES COUNTY, OH
 ANITA HALL
 12-21-2009 At 03:11 pm.
 SMALL PLAT 40.00
 DR Book 19 Page 1615 - 1615
 OR 215 pgs 2107 + 2110

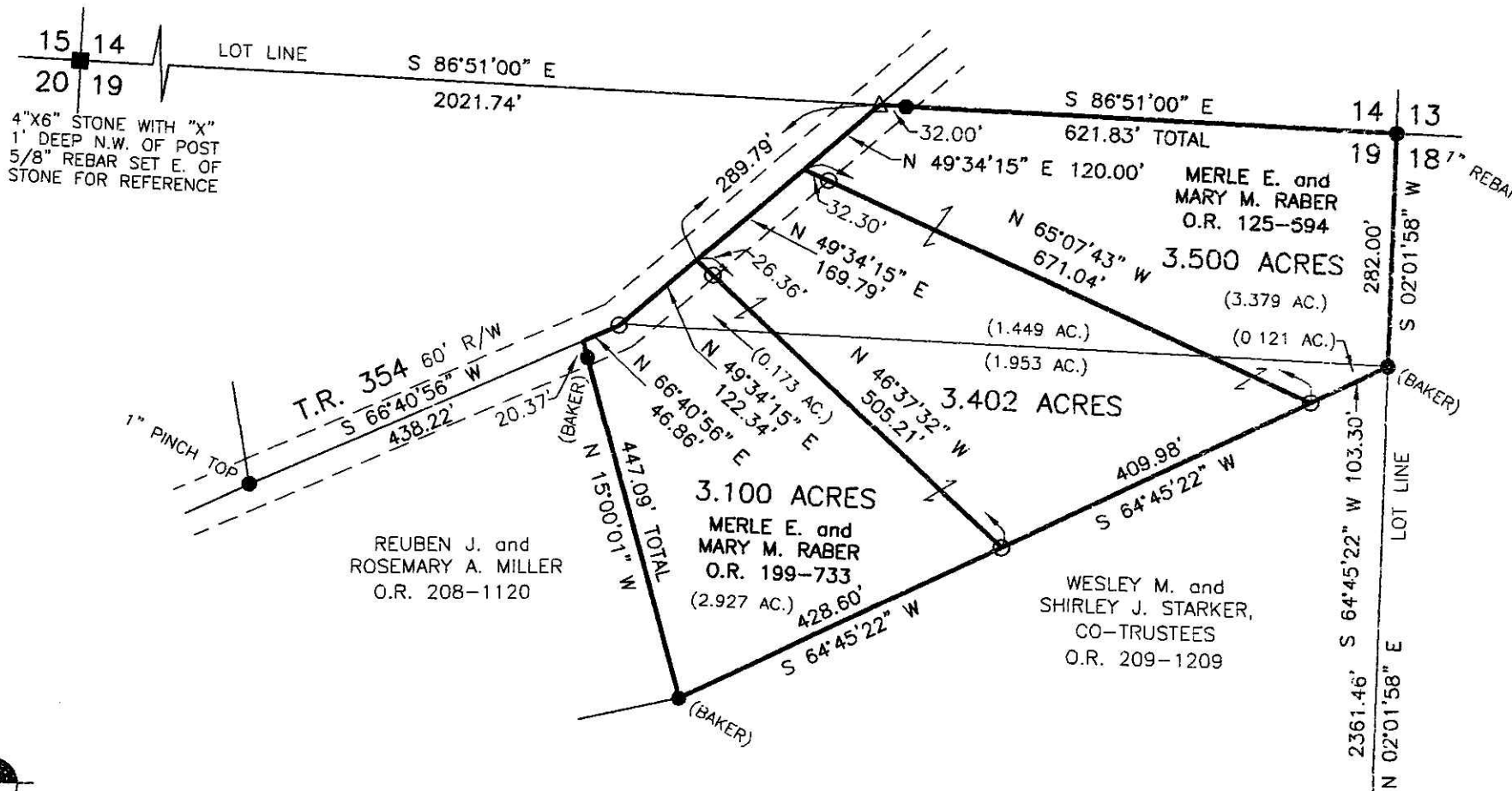
Instrument 200900064497 DR Book Page 19 1615

200900064497
 HOLMES CTY
 TITLE
 MILLERSBURG OH



SCALE: 1"=200'

- STONE FOUND
- 5/8" REBAR FOUND UNLESS OTHERWISE NOTED
- △ R.R. SPIKE SET
- 5/8" REBAR SET WITH I.D. CAP I.D. CAP MARKED "BAKER 6938"



I CERTIFY THIS SURVEY TO BE CORRECT TO THE BEST OF MY KNOWLEDGE.

Jamie D. Darr
 JAMIE D. DARR P.S. 7755

DATE: NOV. 9, 2009
 JDD\ALG
 FILE NAME: WORK3\S-517-09\ERZ

DONALD C. BAKER SURVEYING
 138 N. CLAY STREET
 MILLERSBURG, OHIO 44654
 PH. 330-674-4788
 FAX 330-674-6027

APPROVED FOR TRANSFER ONLY
 NO SUBDIVISION PLAT REQUIRED
 (O.R.C. 711.001 & 711.131)
 Lot(s) not for building unless
 approved by Board of Health.
 HOLMES CO. PLANNING COMM.

By *mt* Date *12/3/09*

PLAT APPROVED

11/18/2009

C.R. 407
 50' R/W
 19 18
 24 23