

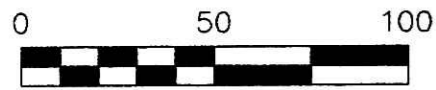
200900062725  
HOLMES COUNTY TITLE  
MILLERSBURG OH 44654

200900062725  
Filed for Record in  
HOLMES COUNTY, OH  
ANITA HALL  
08-13-2009 At 01:48 pm.  
SMALL PLAT 40.00  
OR Book 19 Page 1566 - 1566

OK 212 pages 2737-2740

BERLIN TOWNSHIP  
3RD. QTR., LOT 25  
T-9 N; R-5 W  
HOLMES COUNTY, OHIO

SURVEYED FOR: JIM GAUSE



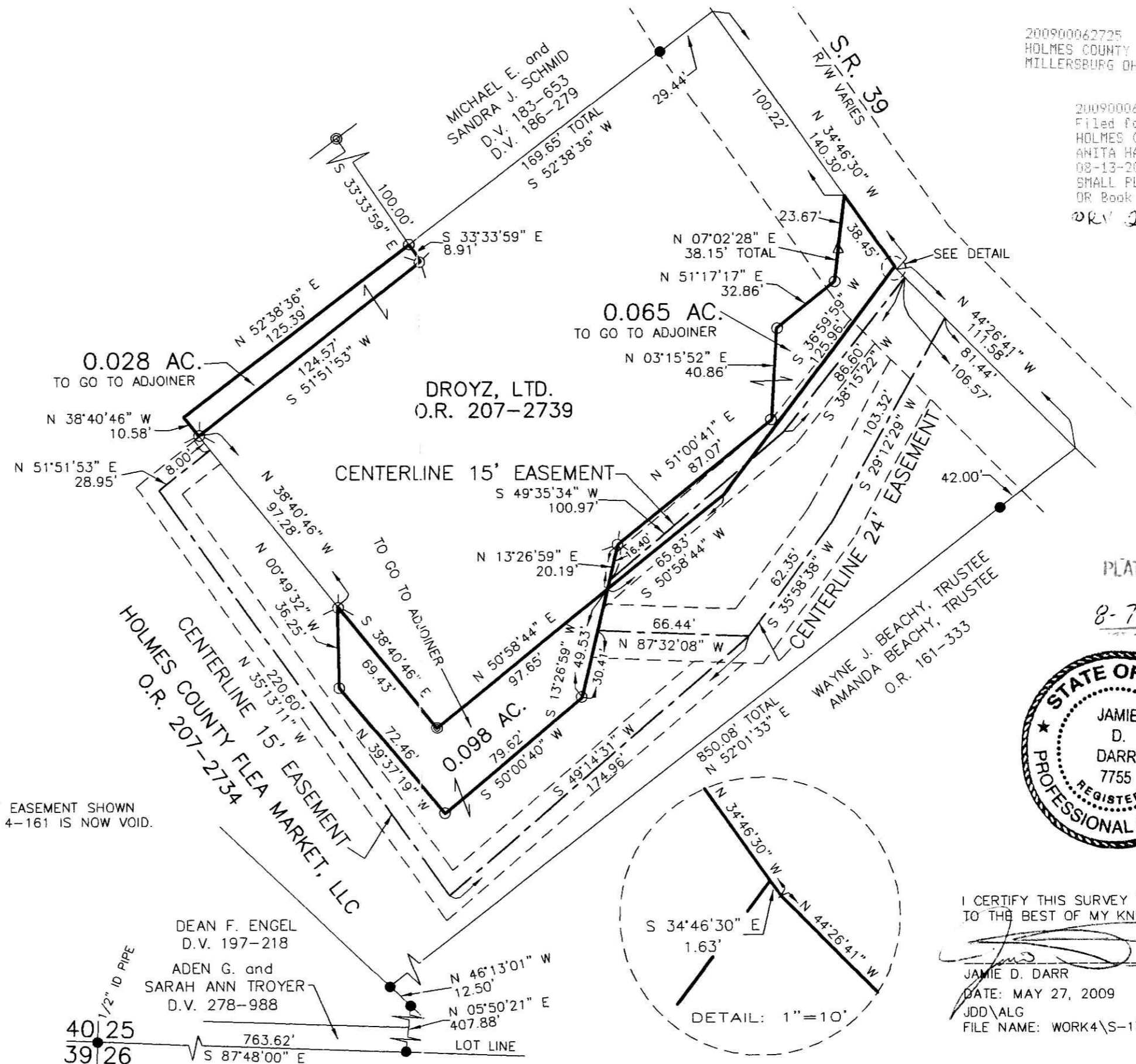
SCALE: 1"=50'

- 5/8" REBAR FOUND UNLESS OTHERWISE NOTED
- 5/8" REBAR SET WITH I.D. CAP I.D. CAP MARKED "BAKER 6938"
- ⊙ MAG NAIL SET
- ⊙ DRILL HOLE IN CONCRETE FOUND
- △ R.R. SPIKE SET

REFERENCES

- DEED VOL. 186 PAGE 279
- DEED VOL. 197 PAGE 218
- O.R. VOL. 161 PAGE 333
- O.R. VOL. 207 PAGE 2734
- O.R. VOL. 207 PAGE 2739
- PLAT VOL. 4 PAGES 8, 87, 130 & 161
- PLAT VOL. 5 PAGE 3
- PLAT VOL. 14 PAGE 516
- PLAT VOL. 17 PAGE 455
- PLAT VOL. 18 PAGES 706 & 707
- PLAT VOL. 19 PAGE 1410
- BEARINGS FROM PLAT VOL. 19 PAGE 1410

DONALD C. BAKER SURVEYING  
138 N. CLAY STREET  
MILLERSBURG, OHIO 44654  
PH. 330-674-4788  
FAX 330-674-6027



NOTE: THE 18' EASEMENT SHOWN ON PLAT VOL. 4-161 IS NOW VOID.

PLAT APPROVED  
8-7-09 *JDD*



I CERTIFY THIS SURVEY TO BE CORRECT TO THE BEST OF MY KNOWLEDGE.  
*JDD*  
JAMIE D. DARR P.S. 7755  
DATE: MAY 27, 2009  
JDD\ALG  
FILE NAME: WORK4\S-176-09