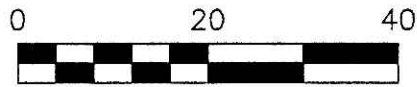
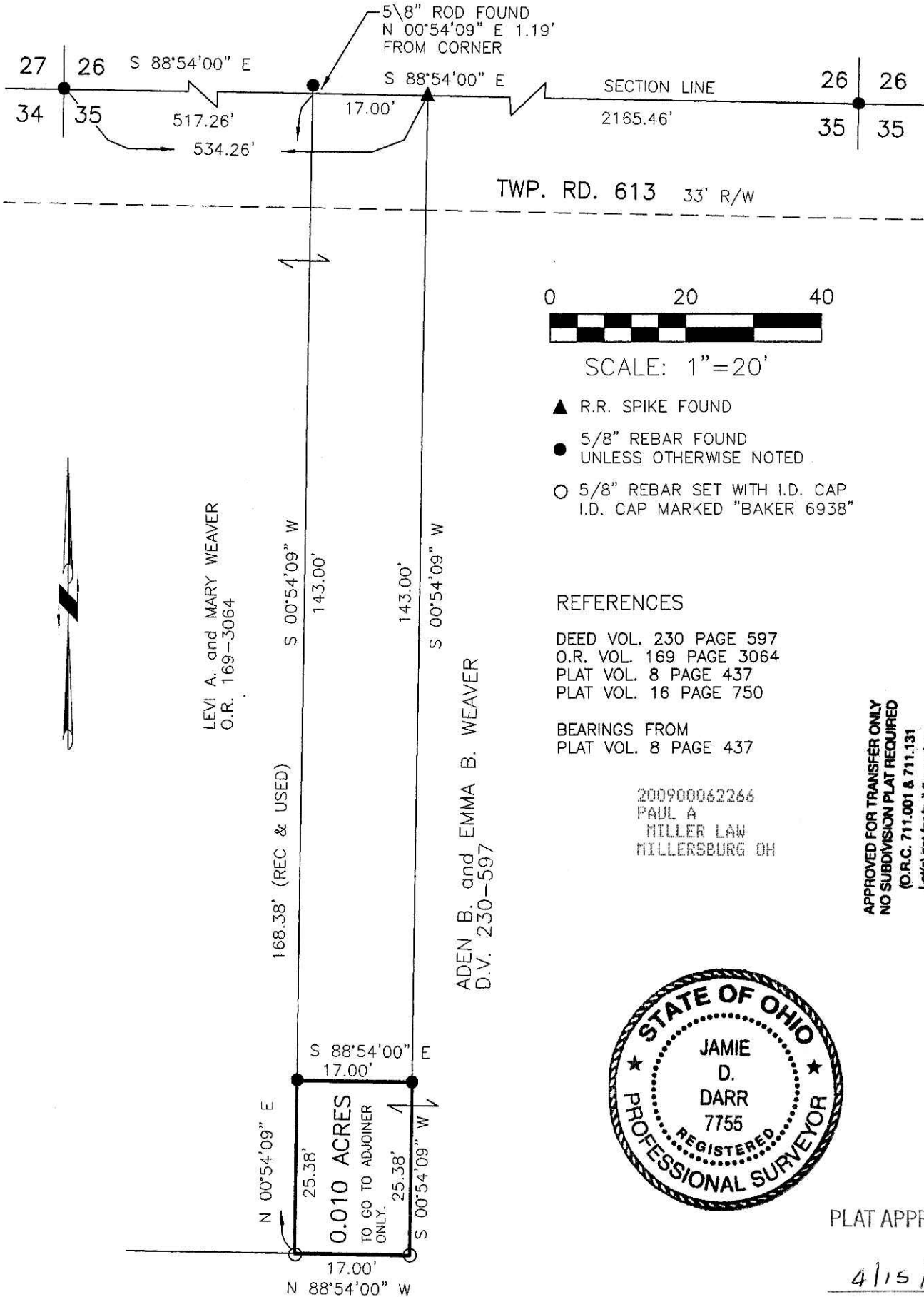


SALT CREEK TOWNSHIP  
N.W. QTR. SECTION 35  
T-15 N; R-12 W  
HOLMES COUNTY, OHIO

SURVEYED FOR: LEVI A. WEAVER

200900062266  
Filed for Record in  
HOLMES COUNTY, OH  
ANITA HALL  
07-14-2009 At 10:55 am.  
SMALL PLAT 40.00  
OR Book 19 Page 1544 - 1544  
**OR 212 p 273**



SCALE: 1" = 20'

- ▲ R.R. SPIKE FOUND
- 5/8" REBAR FOUND UNLESS OTHERWISE NOTED
- 5/8" REBAR SET WITH I.D. CAP I.D. CAP MARKED "BAKER 6938"

REFERENCES

DEED VOL. 230 PAGE 597  
O.R. VOL. 169 PAGE 3064  
PLAT VOL. 8 PAGE 437  
PLAT VOL. 16 PAGE 750

BEARINGS FROM  
PLAT VOL. 8 PAGE 437

200900062266  
PAUL A  
MILLER LAW  
MILLERSBURG OH

APPROVED FOR TRANSFER ONLY  
NO SUBDIVISION PLAT REQUIRED  
(O.R.C. 711.001 & 711.131  
Lots) not for building unless  
approved by Board of Health.  
HOLMES CO. PLANNING COMM.

By VB Date 4-12-09



PLAT APPROVED

4/15/2009



DONALD C. BAKER SURVEYING  
138 N. CLAY STREET  
MILLERSBURG, OHIO 44654  
PH. 330-674-4788  
FAX 330-674-6027

I CERTIFY THIS SURVEY TO BE CORRECT  
TO THE BEST OF MY KNOWLEDGE.

Jamie D. Darr  
JAMIE D. DARR P.S. 7755  
DATE: SEPTEMBER 17, 2007  
JDD/AEG  
FILE NAME: WORK3A\S-572-07\MLD