

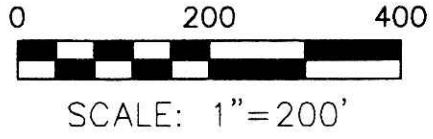
RICHLAND TOWNSHIP
 S.W. QTR. SECTION 9
 N.W. QTR. SECTION 12
 T-8 N; R-9 W
 HOLMES COUNTY, OHIO

SURVEYED FOR: LLOYD SCHLAUCH

Instrument 200900060884 Book Page 19 1500

200900060884
 Filed for Record in
 HOLMES COUNTY, OH
 ANITA HALL
 04-17-2009 At 03:14 pm.
 PLAT MED 43.20
 DR Book 19 Page 1500 - 1500
 ORV 310 page 800

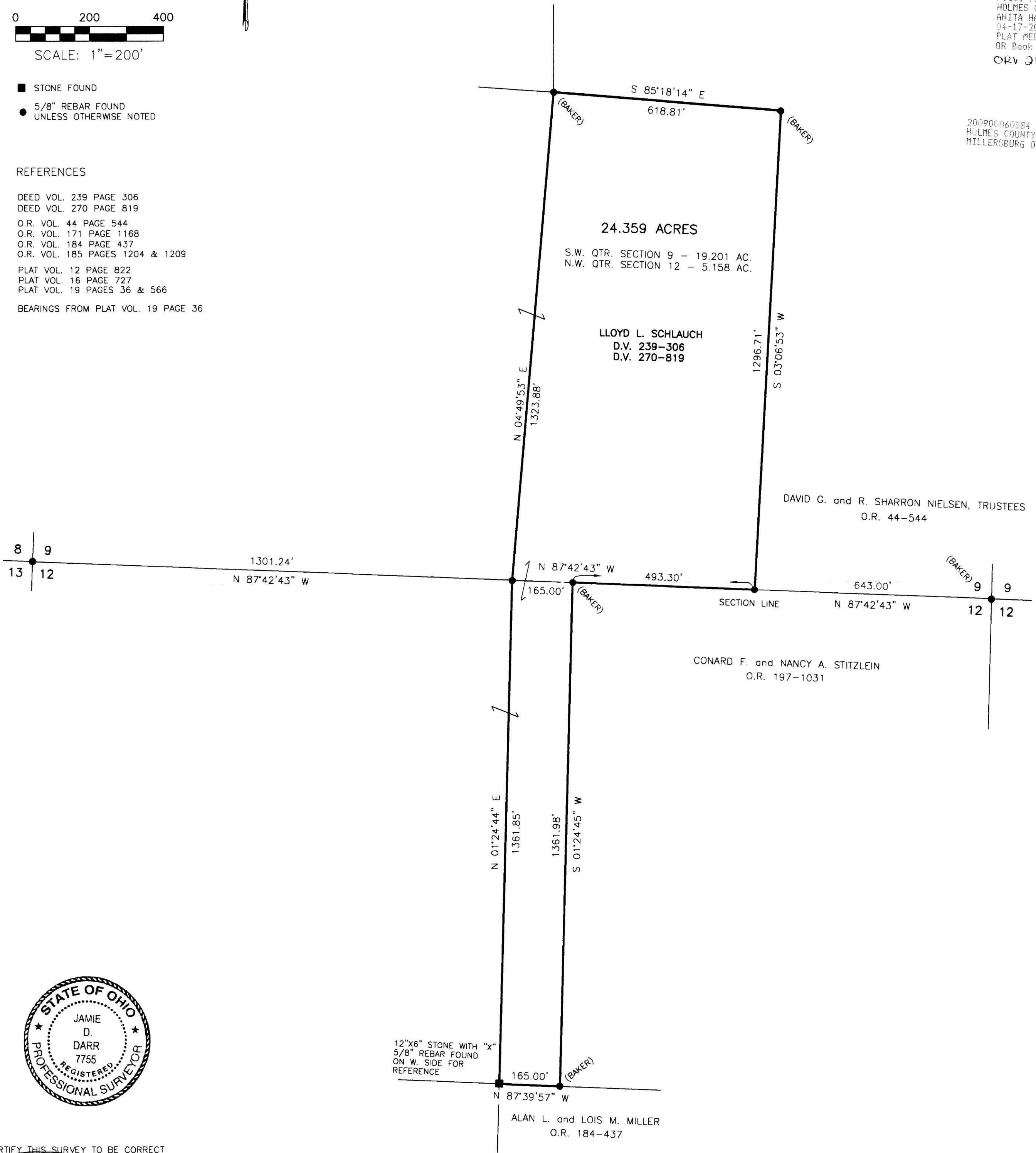
200900060884
 HOLMES COUNTY TITLE
 MILLERSBURG OH 44654



- STONE FOUND
- 5/8" REBAR FOUND UNLESS OTHERWISE NOTED

REFERENCES

DEED VOL. 239 PAGE 306
 DEED VOL. 270 PAGE 819
 O.R. VOL. 44 PAGE 544
 O.R. VOL. 171 PAGE 1168
 O.R. VOL. 184 PAGE 437
 O.R. VOL. 185 PAGES 1204 & 1209
 PLAT VOL. 12 PAGE 822
 PLAT VOL. 16 PAGE 727
 PLAT VOL. 19 PAGES 36 & 566
 BEARINGS FROM PLAT VOL. 19 PAGE 36



I CERTIFY THIS SURVEY TO BE CORRECT TO THE BEST OF MY KNOWLEDGE.

JAMIE D. DARR P.S. 7755
 DATE: JULY 9, 2008
 JDD\AB-ERZ
 FILE NAME: WORK3\S-229A-08\ERZ

REVISED JULY 24, 2008

DONALD C. BAKER SURVEYING
 138 N. CLAY STREET
 MILLERSBURG, OHIO 44654
 PH. 330-674-4788
 FAX 330-674-6027

APPROVED FOR TRANSFER ONLY
 NO SUBDIVISION PLAT REQUIRED
 (O.R.C. 711.001 & 711.131
 Lots) not for building unless
 approved by Board of Health,
 HOLMES CO. PLANNING COMM.

By JB Date 3-12-09

PLAT APPROVED

3/19/2009