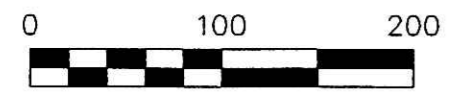


WASHINGTON TOWNSHIP
S.W. QTR. SECTION 18
T-19 N; R-15 W
HOLMES COUNTY, OHIO

KNOX TOWNSHIP
N.W. QTR. SECTION 19
T-19 N; R-15 W
HOLMES COUNTY, OHIO

SURVEYED FOR: REGINA NAYOR



SCALE: 1"=100'

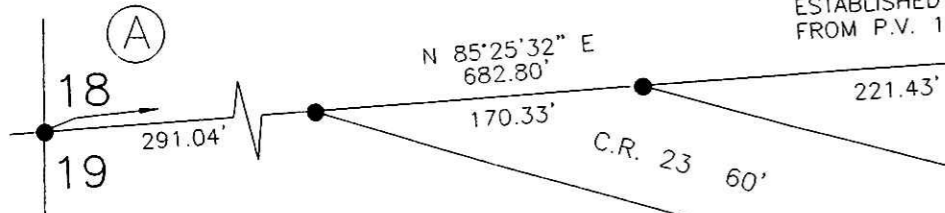
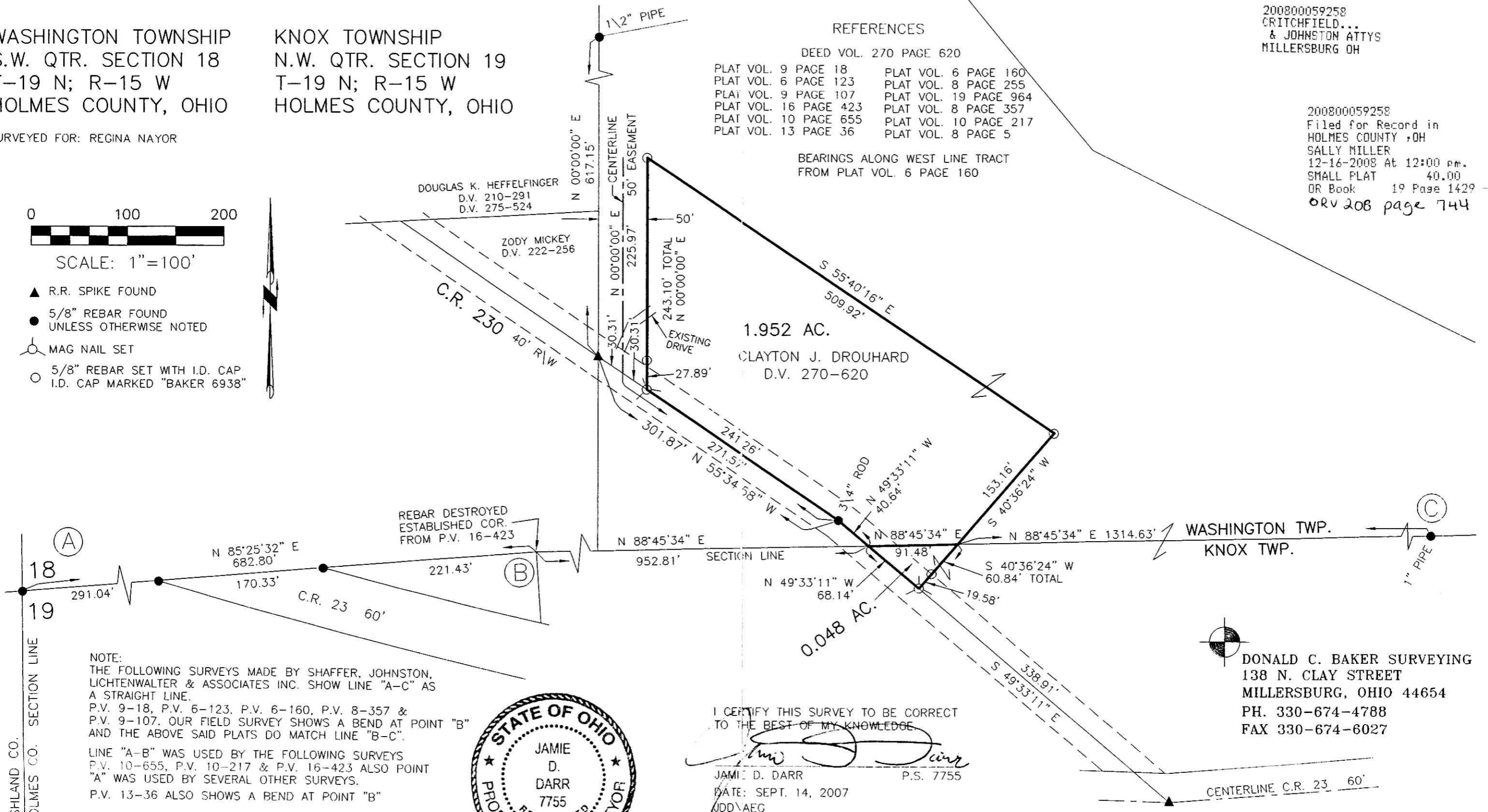
- ▲ R.R. SPIKE FOUND
- 5/8" REBAR FOUND UNLESS OTHERWISE NOTED
- MAG NAIL SET
- 5/8" REBAR SET WITH I.D. CAP I.D. CAP MARKED "BAKER 6938"

REFERENCES

DEED VOL. 270 PAGE 620	
PLAT VOL. 9 PAGE 18	PLAT VOL. 6 PAGE 160
PLAT VOL. 6 PAGE 123	PLAT VOL. 8 PAGE 255
PLAT VOL. 9 PAGE 107	PLAT VOL. 19 PAGE 964
PLAT VOL. 16 PAGE 423	PLAT VOL. 8 PAGE 357
PLAT VOL. 10 PAGE 655	PLAT VOL. 10 PAGE 217
PLAT VOL. 13 PAGE 36	PLAT VOL. 8 PAGE 5

200800059258
CRITCHFIELD...
& JOHNSTON ATTYS
MILLERSBURG OH

200800059258
Filed for Record in
HOLMES COUNTY, OH
SALLY MILLER
12-16-2008 At 12:00 pm.
SMALL PLAT 40.00
OR Book 19 Page 1429 - 1429
ORV 208 page 744



NOTE:
THE FOLLOWING SURVEYS MADE BY SHAFFER, JOHNSTON, LICHENWALTER & ASSOCIATES INC. SHOW LINE "A-C" AS A STRAIGHT LINE.
P.V. 9-18, P.V. 6-123, P.V. 6-160, P.V. 8-357 & P.V. 9-107. OUR FIELD SURVEY SHOWS A BEND AT POINT "B" AND THE ABOVE SAID PLATS DO MATCH LINE "B-C".
LINE "A-B" WAS USED BY THE FOLLOWING SURVEYS P.V. 10-655, P.V. 10-217 & P.V. 16-423 ALSO POINT "A" WAS USED BY SEVERAL OTHER SURVEYS.
P.V. 13-36 ALSO SHOWS A BEND AT POINT "B"



I CERTIFY THIS SURVEY TO BE CORRECT TO THE BEST OF MY KNOWLEDGE.

Jamie D. Darr
JAMIE D. DARR P.S. 7755
DATE: SEPT. 14, 2007
JDD/AEG
FILE NAME: WORK3A\S-336-07

DONALD C. BAKER SURVEYING
138 N. CLAY STREET
MILLERSBURG, OHIO 44654
PH. 330-674-4788
FAX 330-674-6027

PLAT APPROVED
12-2-08 *JL*