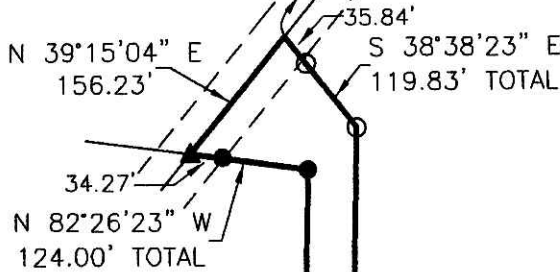
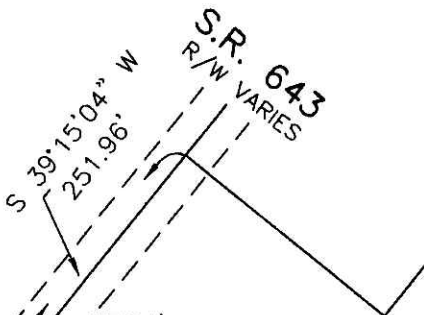


CLARK TOWNSHIP
 S.E. QTR. SECTION 23
 T-8 N; R-5 W
 HOLMES COUNTY, OHIO

SURVEYED FOR: PAUL SHUTT

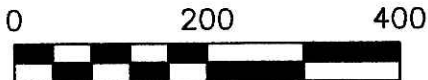
Instrument 200800057108 OR Book Page 19 1342



REFERENCES

O.R. VOL. 192 PAGES 2121 & 2123
 PLAT VOL. 18 PAGE 481
 PLAT VOL. 19 PAGE 845
 BEARINGS FROM PLAT VOL. 19 PAGE 845

200800057108
 Filed for Record in
 HOLMES COUNTY, OH
 SALLY MILLER
 07-16-2008 At 09:19 am.
 SMALL PLAT 40.00
 OR Book 19 Page 1342 - 1342
 OR 205 p 2596



SCALE: 1"=200'

- STONE FOUND
- ▲ R.R. SPIKE FOUND
- 5/8" REBAR FOUND UNLESS OTHERWISE NOTED
- 5/8" REBAR SET WITH I.D. CAP I.D. CAP MARKED "BAKER 6938"

JOSEPH D. and ADA J. ERB
 O.R. 132-833

MARVIN A. HERSHBERGER
 MIRIAM M. MAST
 O.R. 132-861

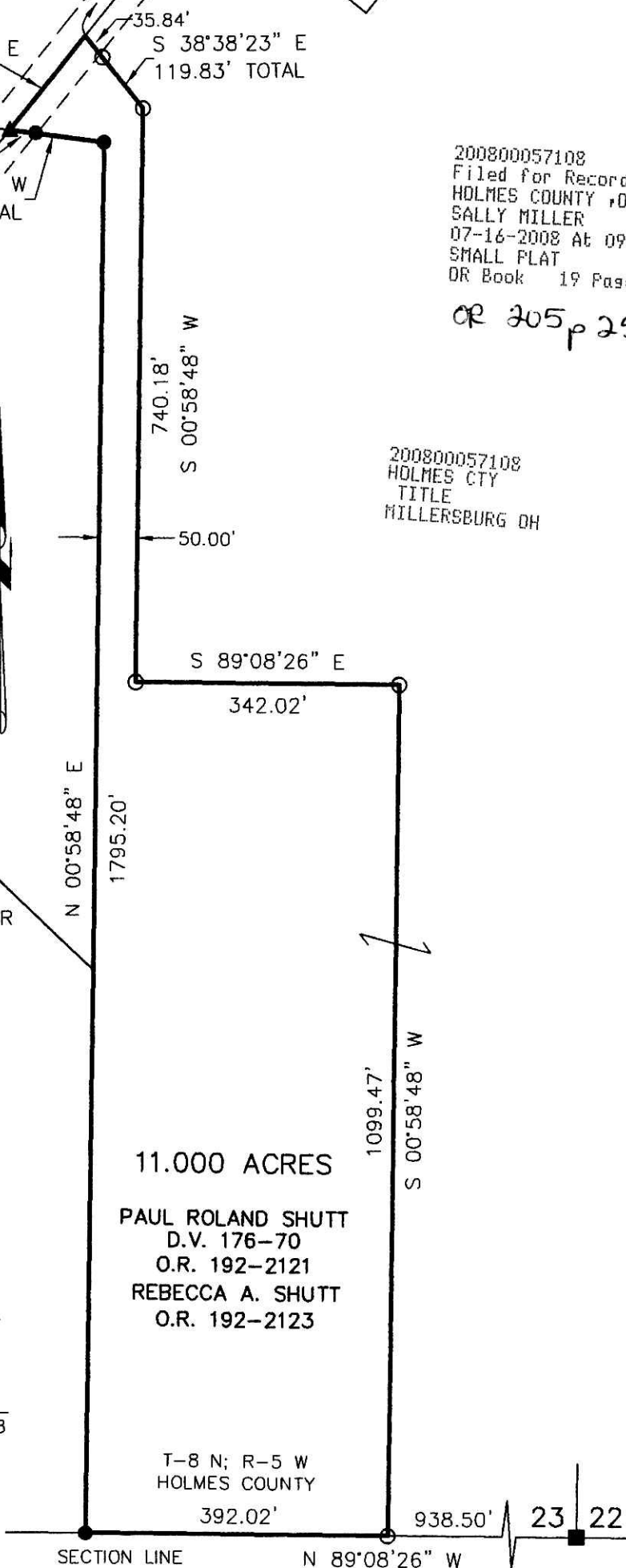
200800057108
 HOLMES CTY
 TITLE
 MILLERSBURG OH



I CERTIFY THIS SURVEY TO BE CORRECT TO THE BEST OF MY KNOWLEDGE.

Donald C. Baker

DONALD C. BAKER P.S. 6938
 DATE: JUNE 12, 2008
 FDB\KES
 FILE NAME: WORK4\S-268-08\ERZ



11.000 ACRES

PAUL ROLAND SHUTT
 D.V. 176-70
 O.R. 192-2121
 REBECCA A. SHUTT
 O.R. 192-2123

T-8 N; R-5 W
 HOLMES COUNTY

SECTION LINE N 89°08'26" W

COSHOCTON COUNTY
 T-7 N; R-5 W

PLAT APPROVED

DONALD C. BAKER SURVEYING
 138 N. CLAY STREET
 MILLERSBURG, OHIO 44654
 PH. 330-674-4788
 FAX 330-674-6027

7/1/2008-6