

MECHANIC TOWNSHIP  
N.E. QTR. SECTION 3  
T-8 N; R-6 W  
HOLMES COUNTY, OHIO

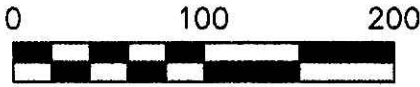
200800054408  
Filed for Record in  
HOLMES COUNTY, OH  
SALLY MILLER  
01-30-2008 At 02:10 pm.  
SMALL PLAT 40.00  
DR Book 19 Page 1238 - 1238  
ORV 202 page a81

SURVEYED FOR: MOSE KEIM

REFERENCES

- DEED VOL. 204 PAGE 655
- DEED VOL. 263 PAGE 734
- PLAT VOL. 14 PAGE 457
- PLAT VOL. 19 PAGES 135 & 136
- BEARINGS FROM PLAT VOL. 16 PAGE 170

THIS PLAT IS TO CORRECT THE  
BEGINNING POINT OF  
D.V. 263-734 AT THE N.E.  
CORNER OF SECTION 3 AND  
EAST LINE OF SECTION 3.  
SEE PLAT VOL. 19 PAGE 135



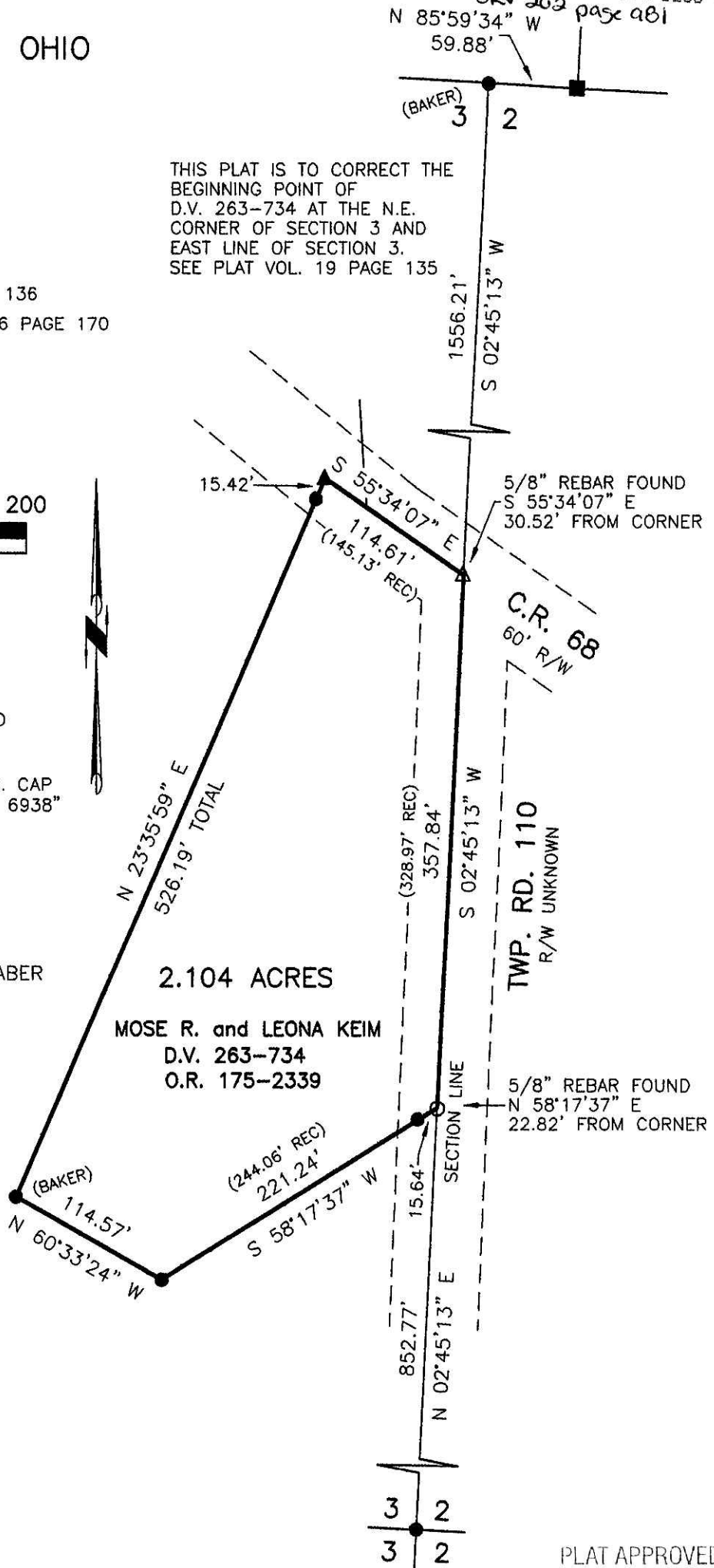
SCALE: 1"=100'

- STONE FOUND
- ▲ R.R. SPIKE FOUND
- 5/8" REBAR FOUND  
UNLESS OTHERWISE NOTED
- △ R.R. SPIKE SET
- 5/8" REBAR SET WITH I.D. CAP  
I.D. CAP MARKED "BAKER 6938"

HENRY A. and EDNA RABER  
D.V. 204-655

2.104 ACRES

MOSE R. and LEONA KEIM  
D.V. 263-734  
O.R. 175-2339



PLAT APPROVED

I CERTIFY THIS SURVEY TO BE CORRECT  
TO THE BEST OF MY KNOWLEDGE.

*Donald C. Baker*

DONALD C. BAKER P.S. 6938  
DATE: SEPT. 28, 2007  
KES\ALG  
FILE NAME: WORK3A\S-573A-07\ERZ



DONALD C. BAKER SURVEYING  
138 N. CLAY STREET  
MILLERSBURG, OHIO 44654  
PH. 330-674-4788  
FAX 330-674-6027

*1/14/2008*