

MECHANIC TOWNSHIP
N.E. QTR. SECTION 1
T-8 N; R-6 W
HOLMES COUNTY, OHIO
SURVEYED FOR: SUSAN MILLER

Instrument Book Page
200800054146 OR 19 1226

- 5/8" REBAR FOUND UNLESS OTHERWISE NOTED
- ▲ R.R. SPIKE FOUND
- 5/8" REBAR WITH I.D. CAP SET I.D. CAP MARKED "BAKER 6938"
- △ R.R. SPIKE SET

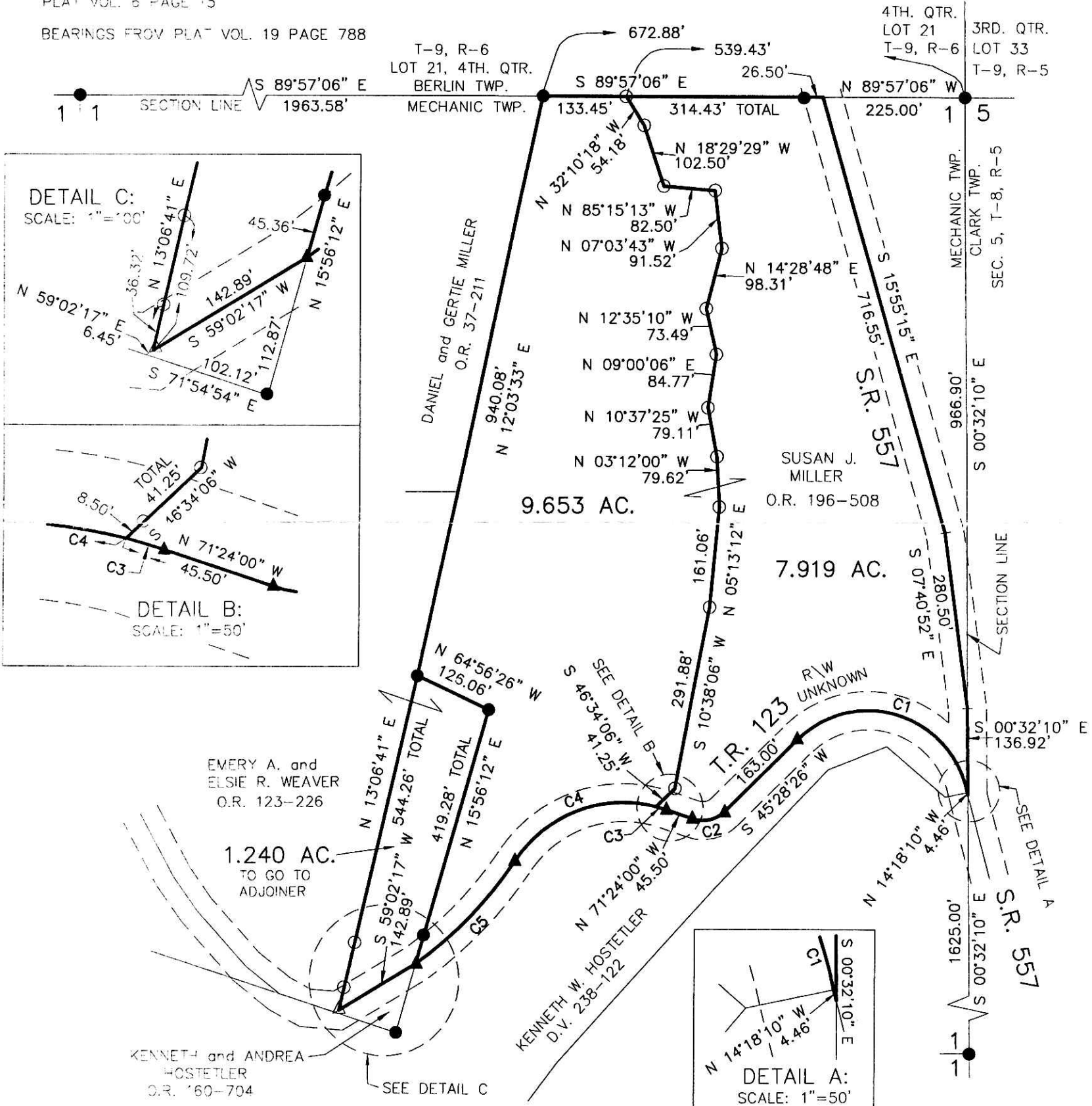
200800054146
Filed for Record in
HOLMES COUNTY, OH
SALLY MILLER
01-11-2008 At 11:57 am.
SMALL PLAT 40.00
OR Book 19 Page 1226 - 1226
OR 201 p 3428
OR 201 p 3430

200800054146
BLAIR A
BOWER ATTY
MILLERSBURG OH

REFERENCES

- DEED VOL. 238 PAGE 122
- O.R. VOL. 196 PAGE 508
- O.R. VOL. 123 PAGE 226
- O.R. VOL. 37 PAGE 211
- PLAT VOL. 19 PAGE 788
- PLAT VOL. 18 PAGE 703
- PLAT VOL. 5 PAGE 64
- PLAT VOL. 6 PAGE 15

BEARINGS FROM PLAT VOL. 19 PAGE 788



CURVE	DELTA ANGLE	RADIUS	ARC LENGTH	TANGENT	CHORD LENGTH	CHORD BEARING
C1	123°11'14"	160.00'	344.00'	295.83'	281.47'	N 72°55'59" W
C2	63°07'33"	50.00'	55.09'	30.72'	52.34'	S 77°02'13" W
C3	04°27'50"	210.00'	16.36'	8.18'	16.36'	N 73°37'57" W
C4	70°31'09"	210.00'	258.47'	148.47'	242.46'	S 68°52'33" W
C5	20°37'46"	636.62'	229.21'	115.86'	227.98'	S 43°55'47" W

APPROVED FOR TRANSFER ONLY
NO SUBDIVISION PLAT REQUIRED
(O.R.C. 711.001 & 711.131)
Lot(s) not for building unless
approved by Board of Health.
HOLMES CO. PLANNING COMM.

By mtl Date 1/10/08

DONALD C. BAKER SURVEYING
138 N. CLAY ST.
MILLERSBURG, OHIO, 44654
PH. 330-674-4788
FAX. 330-674-6027



I CERTIFY THIS SURVEY TO BE CORRECT
TO THE BEST OF MY KNOWLEDGE.

Donald C. Baker
DONALD C. BAKER P.S. 6938
DATE: DEC. 11, 2007

FDB\WMB
File Name: WORK2\S-722-07

PLAT APPROVED

1/4/2008