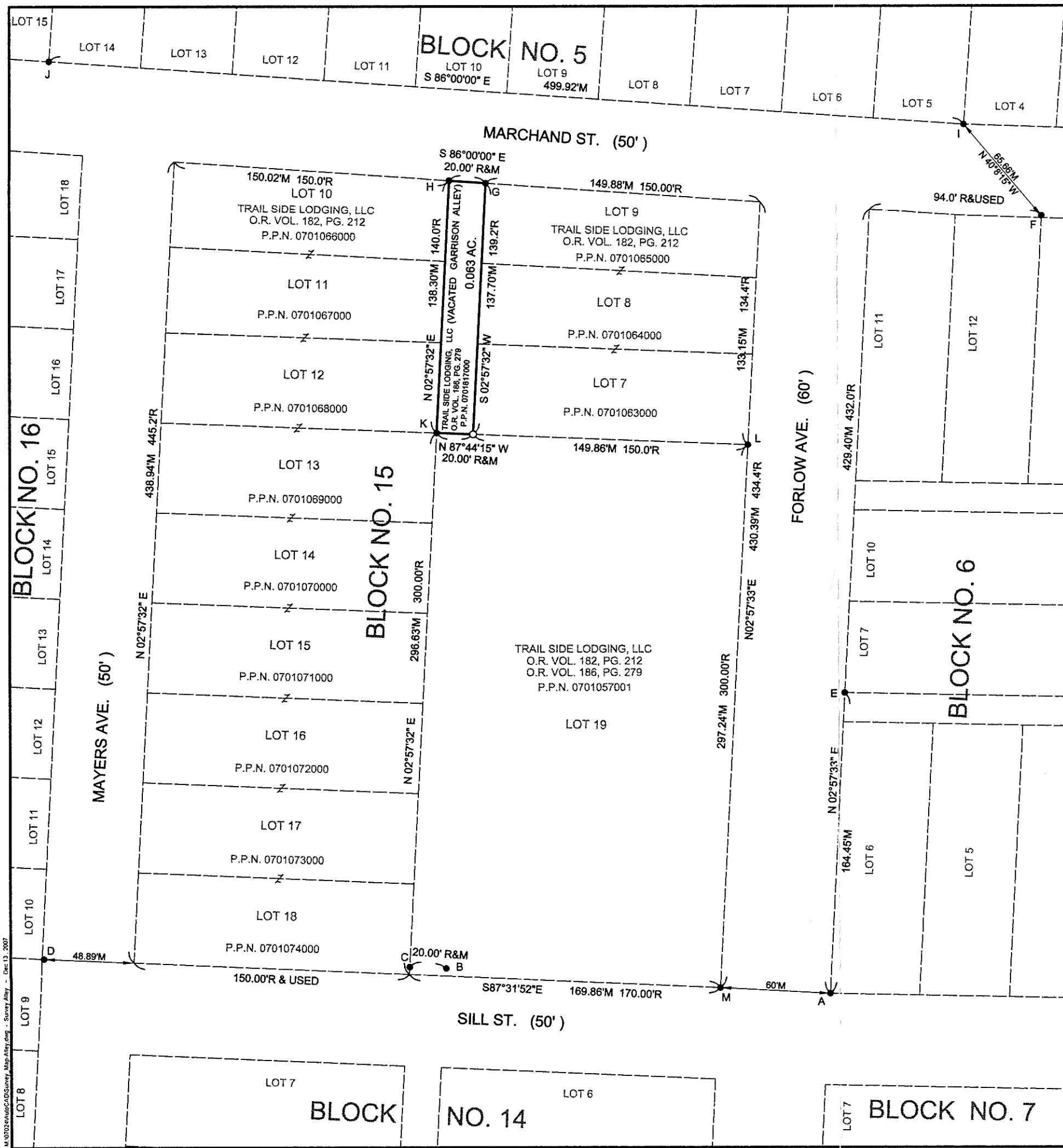


Instrument Book Page
200700053822 OR 19 1212



**PLEASANT VIEW GLASS PLANT ADDITION (P.V. 1 PG.357)
RETRACEMENT SURVEY OF
A PORTION OF VACATED GARRISON ALLEY IN BLOCK 15
MILITARY LOT 42, 1ST QTR., T-9N, R-7W
VILLAGE OF MILLERSBURG
HARDY TOWNSHIP, HOLMES COUNTY, OHIO**

BASIS OF BEARINGS

THE BASIS OF BEARINGS IS ORIENTED TO THE SOUTH LINE OF MILITARY LOT 37, 1st QTR. T-9 R-7 AS SHOWN ON THE PLAT RECORDED IN PLAT BOOK 14, PAGE 3 OF THE HOLMES COUNTY RECORDER'S OFFICE.

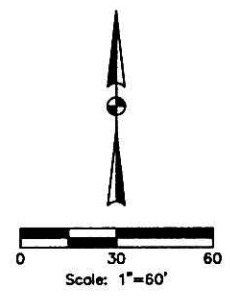
REFERENCES

PLAT BOOK 2, PAGE 447
PLAT BOOK 1, PAGE 357
PLAT BOOK 14, PAGE 3
P.V. VOL. 17, PAGE 81
O.R. VOL. 19, PAGE 606

200700053822
HEARTLAND
TITLE
MILLERSBURG OH

EXISTING MONUMENTS FOUND

POINT	DESCRIPTION	COMMENTS
A	5/8" Rebar	Held
B	5/8" Rebar w/ Baker cap	4.14' N. of S. R. & 20.00' E. of W. R.
C	5/8" Rebar w/ Baker cap	Held for N-S Line, 4.01' N. of R.
D	1" Iron Pipe	Held for N. Line of Sill St., 1.11' E. of R.
E	1" Iron Pipe	On Line
F	3/4" Iron Pipe	1.29' N. of R.
G	5/8" Rebar w/ Baker cap	Held for N-S Line, On Line for E-W Line
H	5/8" Rebar w/ Baker cap	Held for N-S Line, On Line for E-W Line
I	5/8" Rebar	Held
J	5/8" Rebar w/ Baker cap	Held
K	5/8" Rebar w/ Eng. Assoc. cap	Held
L	5/8" Rebar w/ Eng. Assoc. cap	Held
M	5/8" Rebar w/ Eng. Assoc. cap	Held



200700053822
Filed for Record in
HOLMES COUNTY, OH
SALLY MILLER
12-19-2007 At 02:59 pm.
SMALL PLAT 40.00
OR Book 19 Page 1212 - 1212
OR 201 p 2042

LEGEND

- o 5/8" REBAR WITH "ENGINEERING ASSOCIATES" CAP SET
- IRON PIN OR PIPE FOUND
- M MEASURED
- R RECORD
- R/W RIGHT-OF-WAY
- P.P.N. PERMANENT PARCEL NUMBER

I hereby certify that I have surveyed the land shown on this map, and that this map is a correct representation of the land surveyed in March 2007, and that I have found or set the pins and monuments shown on the plat.

D. Lynn Snyder
D. Lynn Snyder P.S. 7287

12/14/07
Date



PLAT APPROVED

12/17/2007

ENGINEERING ASSOCIATES, INC.
1935 EAGLE PASS - WOOSTER OHIO 44691
TELEPHONE: (330) 345-6556
FAX: (330) 345-8077