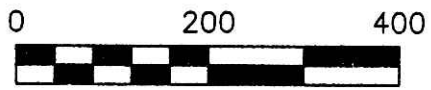


Instrument Book Page
200700053540 OR 19 1199

12
14 13



SCALE: 1"=200'

- 5/8" REBAR FOUND UNLESS OTHERWISE NOTED
- 5/8" REBAR WITH I.D. CAP SET I.D. CAP MARKED "BAKER 6938"

REFERENCES

DEED VOL. 225 PAGE 351
 O.R. VOL. 197 PAGE 3043
 O.R. VOL. 13 PAGE 840
 PLAT VOL. 18 PAGE 393
 PLAT VOL. 16 PAGE 816
 BEARINGS FROM PLAT VOL. 18 PAGE 393

RIPLEY TOWNSHIP
 N.W. QTR. SECTION 13
 T-17 N; R-14 W
 HOLMES COUNTY, OHIO

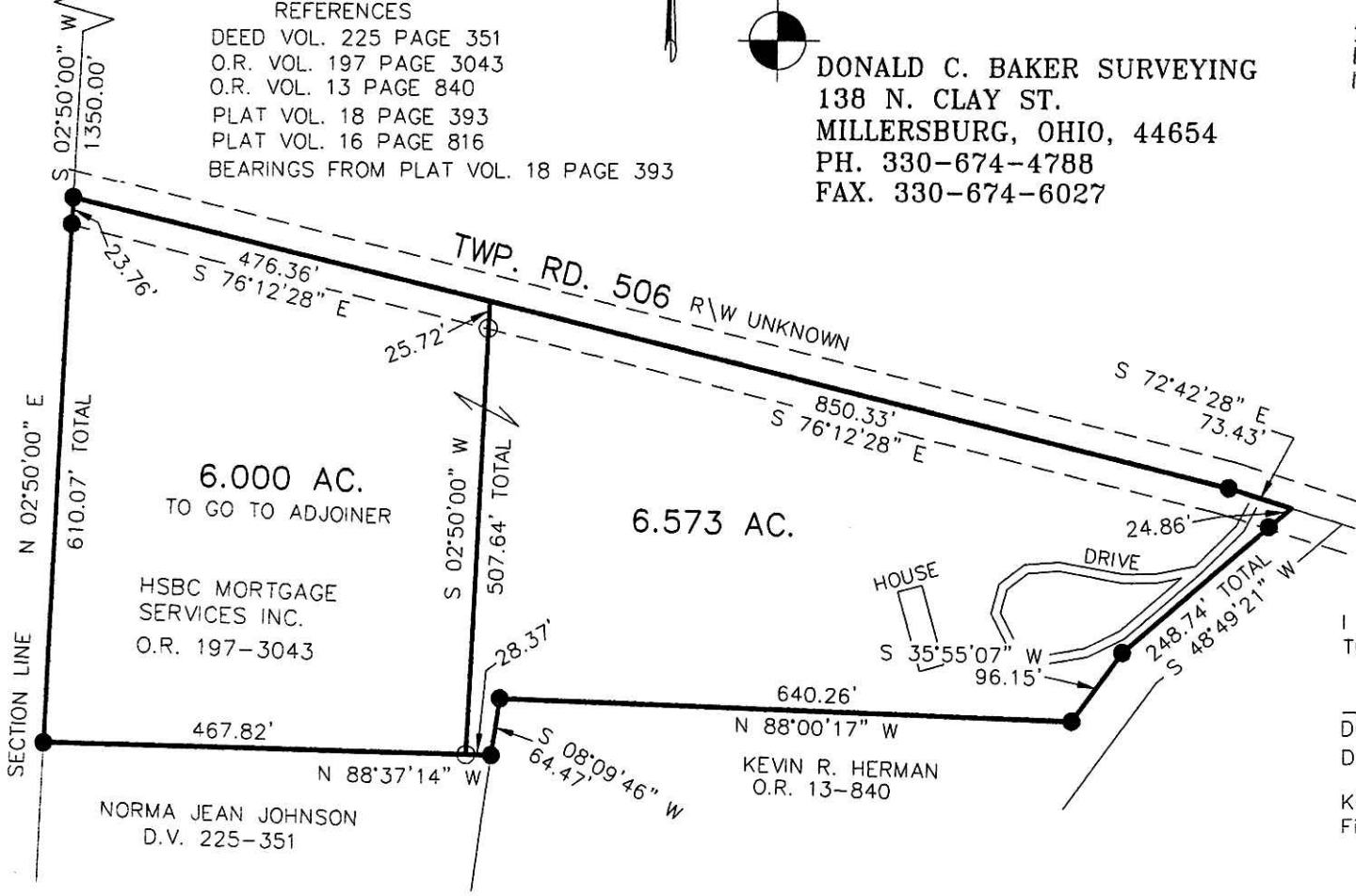
SURVEYED FOR: HSBC MORTGAGE SERVICES INC.



DONALD C. BAKER SURVEYING
 138 N. CLAY ST.
 MILLERSBURG, OHIO, 44654
 PH. 330-674-4788
 FAX. 330-674-6027

200700053540
 Filed for Record in
 HOLMES COUNTY, OH
 SALLY MILLER
 11-29-2007 At 12:20 pm.
 SMALL PLAT 40.00
 OR Book 19 Page 1199 - 1199
 ORV 201 page 914

200700053540
 HOLMES COUNTY TITLE
 MILLERSBURG OH 44654



I CERTIFY THIS SURVEY TO BE CORRECT TO THE BEST OF MY KNOWLEDGE.

Donald C. Baker

DONALD C. BAKER P.S. 69
 DATE: OCT. 16, 2007

KES\ALG
 File Name: WORK2\S-635-07

PLAT APPROVED

11/19/2007