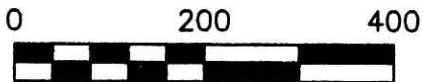


RIPLEY TOWNSHIP
S.W. QTR. SECTION 36
T-18 N; R-14 W
HOLMES COUNTY, OHIO

SURVEYED FOR: DENNIS SCHLABACH



SCALE: 1"=200'

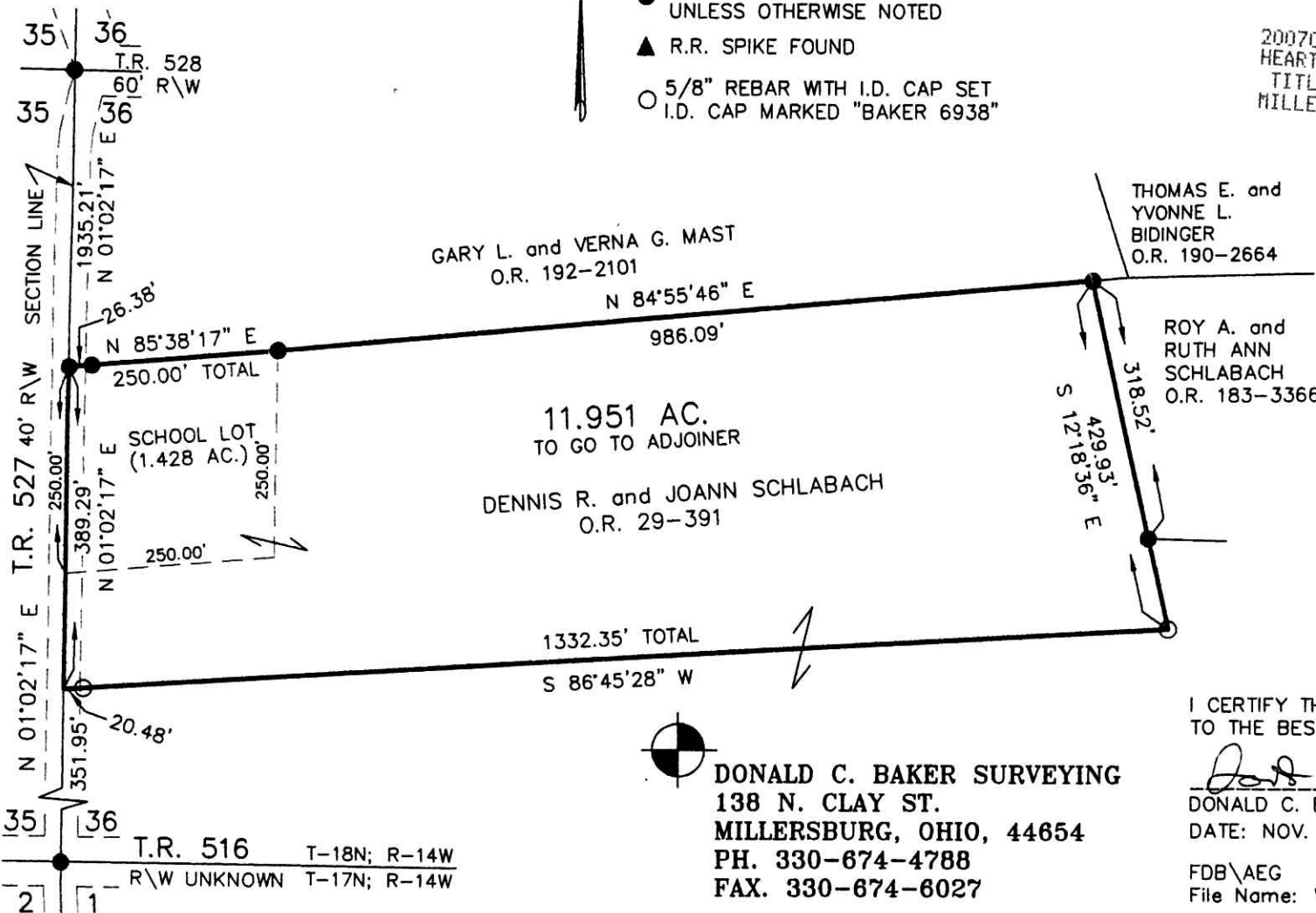
- 5/8" REBAR FOUND UNLESS OTHERWISE NOTED
- ▲ R.R. SPIKE FOUND
- 5/8" REBAR WITH I.D. CAP SET I.D. CAP MARKED "BAKER 6938"

200700053523
Filed for Record in
HOLMES COUNTY, OH
SALLY MILLER
11-28-2007 At 02:17 pm.
SMALL PLAT 40.00
OR Book 19 Page 1198 - 1198
OR 201 p 849

200700053523
HEARTLAND
TITLE
MILLERSBURG OH

REFERENCES

- O.R. VOL. 29 PAGE 391
- O.R. VOL. 192 PAGE 2101
- O.R. VOL. 183 PAGE 3366
- PLAT VOL. 17 PAGE 61
- PLAT VOL. 19 PAGE 774
- PLAT VOL. 18 PAGE 12
- BEARINGS FROM
PLAT VOL. 18 PAGE 12



I CERTIFY THIS SURVEY TO BE CORRECT TO THE BEST OF MY KNOWLEDGE.

Donald C. Baker
DONALD C. BAKER P.S. 6938
DATE: NOV. 6, 2007

FDB\AEG
File Name: WORK2\S-641-07\PLAT APPROVED

DONALD C. BAKER SURVEYING
138 N. CLAY ST.
MILLERSBURG, OHIO, 44654
PH. 330-674-4788
FAX. 330-674-6027

11/20/2007