

200700048600
CRITCHFIELD...
& JOHNSTON ATTYS
MILLERSBURG OH

HARDY TOWNSHIP
1ST. QTR., LOT 16
T-9 N; R-7 W
HOLMES COUNTY, OHIO

SURVEYED FOR: CASTLE NURSING HOMES, INC.

200700048600
Filed for Record in
HOLMES COUNTY, OH
SALLY MILLER
03-05-2007 At 11:04 am.
SMALL PLAT 40.00
OR Book 19 Page 955 - 955

OR 195p 1020

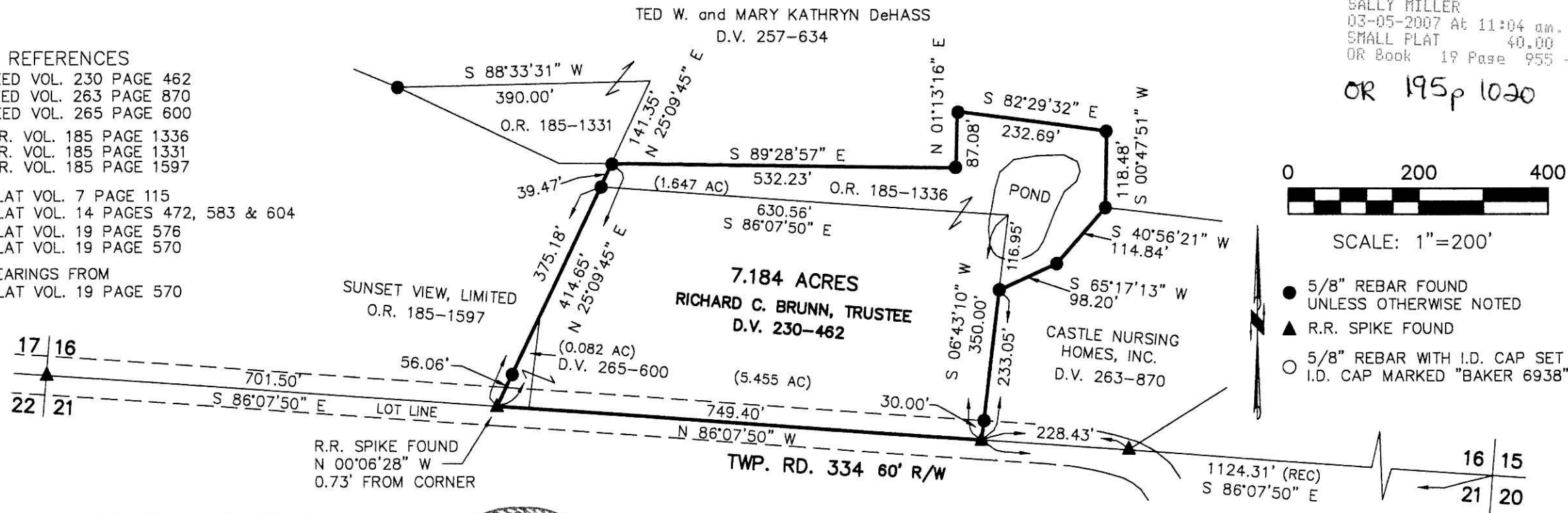
REFERENCES

DEED VOL. 230 PAGE 462
DEED VOL. 263 PAGE 870
DEED VOL. 265 PAGE 600

O.R. VOL. 185 PAGE 1336
O.R. VOL. 185 PAGE 1331
O.R. VOL. 185 PAGE 1597

PLAT VOL. 7 PAGE 115
PLAT VOL. 14 PAGES 472, 583 & 604
PLAT VOL. 19 PAGE 576
PLAT VOL. 19 PAGE 570

BEARINGS FROM
PLAT VOL. 19 PAGE 570



SCALE: 1"=200'

- 5/8" REBAR FOUND UNLESS OTHERWISE NOTED
- ▲ R.R. SPIKE FOUND
- 5/8" REBAR WITH I.D. CAP SET I.D. CAP MARKED "BAKER 6938"

I CERTIFY THIS SURVEY TO BE CORRECT
TO THE BEST OF MY KNOWLEDGE.

Donald C. Baker

DONALD C. BAKER P.S. 6938

DATE: FEB. 19, 2007

ERZ\ALG

File Name: WORK2\S-164-05
S-97-07



PLAT APPROVED

2/22/2007 PB



DONALD C. BAKER SURVEYING
138 N. CLAY ST.
MILLERSBURG, OHIO, 44654
PH. 330-674-4788
FAX. 330-674-6027

VOL. 001958955

Instrument 200700048600 OR Book Page 19 955