

PAINT TOWNSHIP
 N.E. QTR. SECTION 32
 T-15 N; R-11 W
 HOLMES COUNTY, OHIO

SURVEYED FOR: JESSE STEINER

REFERENCES

- DEED VOL. 250 PAGE 989
- PLAT VOL. 8 PAGE 579
- PLAT VOL. 11 PAGE 91
- PLAT VOL. 15 PAGE 141
- PLAT VOL. 16 PAGE 72
- PLAT VOL. 19 PAGE 160
- BEARINGS FROM PLAT VOL. 15 PAGE 141

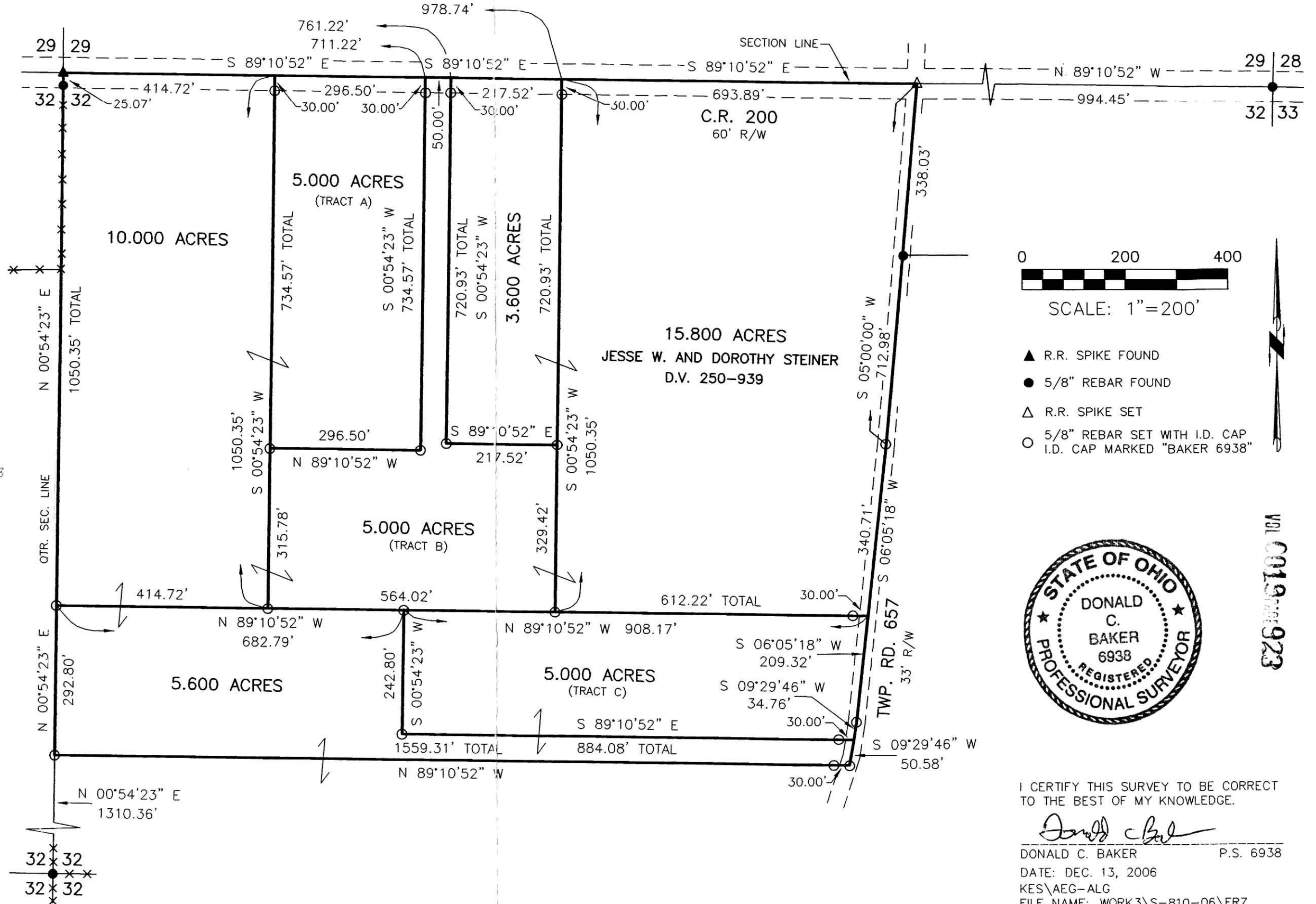
200700047905
 Filed for Record in
 HOLMES COUNTY, OH
 SALLY MILLER
 01-22-2007 At 03:18 PM.
 SMALL PLAT 40.00
 OR Book 19 Page 923 - 923

OR 194 p 1459
 OR 194 p 1461
 OR 194 p 1463

200700047905
 HEARTLAND
 TITLE
 MILLERSBURG OH



DONALD C. BAKER SURVEYING
 138 N. CLAY STREET
 MILLERSBURG, OHIO 44654
 PH. 330-674-4788
 FAX 330-674-6027



VOL 0019 PAGE 923

I CERTIFY THIS SURVEY TO BE CORRECT
 TO THE BEST OF MY KNOWLEDGE.
Donald C. Baker
 DONALD C. BAKER P.S. 6938
 DATE: DEC. 13, 2006
 KES\AEG-ALG
 FILE NAME: WORK3\S-810-06\ERZ

PLAT APPROVED
 1/2/2007-b

Instrument 200700047905 OR Book Page 19 923