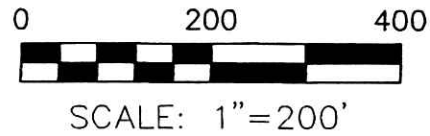


VOL 0019 897



- STONE FOUND
- 5/8" REBAR FOUND UNLESS OTHERWISE NOTED
- 5/8" REBAR SET WITH I.D. CAP I.D. CAP MARKED "BAKER 6938"

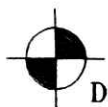
**REFERENCES**

- DEED VOL. 214 PAGE 360
- DEED VOL. 166 PAGE 98
- DEED VOL. 128 PAGE 276
- DEED VOL. 43 PAGE 200
- DEED VOL. 41 PAGE 134
- O.R. VOL. 54 PAGE 165
- O.R. VOL. 264 PAGE 997
- PLAT VOL. 17 PAGE 536
- PLAT VOL. 15 PAGE 33
- PLAT VOL. 17 PAGE 733
- PLAT VOL. 16 PAGE 437
- PLAT VOL. 18 PAGE 116
- BEARINGS ALONG US 62 FROM PLAT VOL. 17 PAGE 536

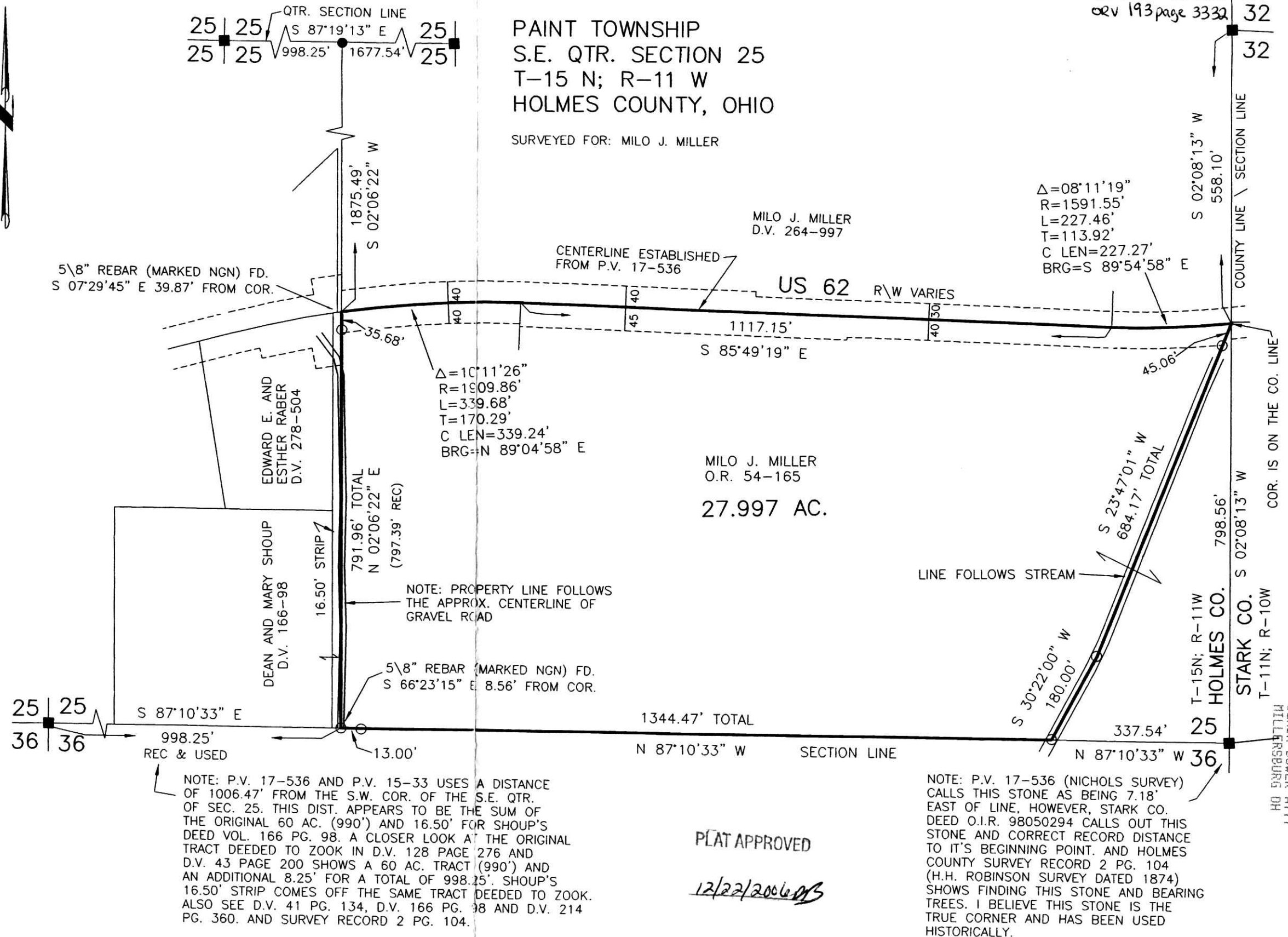


I CERTIFY THIS SURVEY TO BE CORRECT TO THE BEST OF MY KNOWLEDGE.

*Donald C. Baker*  
DONALD C. BAKER P.S. 6938  
DATE: DEC. 15, 2006  
KES\ALG  
FILE NAME: WORK3\S-811-06



**DONALD C. BAKER SURVEYING**  
138 N. CLAY STREET  
MILLERSBURG, OHIO 44654  
PH. 330-674-4788  
FAX 330-674-6027



NOTE: P.V. 17-536 AND P.V. 15-33 USES A DISTANCE OF 1006.47' FROM THE S.W. COR. OF THE S.E. QTR. OF SEC. 25. THIS DIST. APPEARS TO BE THE SUM OF THE ORIGINAL 60 AC. (990') AND 16.50' FOR SHOUP'S DEED VOL. 166 PG. 98. A CLOSER LOOK AT THE ORIGINAL TRACT DEEDED TO ZOOK IN D.V. 128 PAGE 276 AND D.V. 43 PAGE 200 SHOWS A 60 AC. TRACT (990') AND AN ADDITIONAL 8.25' FOR A TOTAL OF 998.25'. SHOUP'S 16.50' STRIP COMES OFF THE SAME TRACT DEEDED TO ZOOK. ALSO SEE D.V. 41 PG. 134, D.V. 166 PG. 98 AND D.V. 214 PG. 360. AND SURVEY RECORD 2 PG. 104.

NOTE: P.V. 17-536 (NICHOLS SURVEY) CALLS THIS STONE AS BEING 7.18' EAST OF LINE, HOWEVER, STARK CO. DEED O.I.R. 98050294 CALLS OUT THIS STONE AND CORRECT RECORD DISTANCE TO IT'S BEGINNING POINT. AND HOLMES COUNTY SURVEY RECORD 2 PG. 104 (H.H. ROBINSON SURVEY DATED 1874) SHOWS FINDING THIS STONE AND BEARING TREES. I BELIEVE THIS STONE IS THE TRUE CORNER AND HAS BEEN USED HISTORICALLY.

PLAT APPROVED  
*12/22/2006*

200600047507  
BLAIR POWER ATTY  
HILLERSBURG OH