

0 200 400



SCALE: 1"=200'

- ▲ R.R. SPIKE FOUND
- 5/8" REBAR FOUND UNLESS OTHERWISE NOTED
- 5/8" REBAR SET WITH I.D. CAP I.D. CAP MARKED "BAKER 6938"

REFERENCES

- DEED VOL. 189 PAGE 76
- O.R. VOL. 55 PAGE 25
- O.R. VOL. 69 PAGE 715
- PLAT VOL. 16 PAGE 13
- PLAT VOL. 16 PAGE 156
- PLAT VOL. 17 PAGE 553
- PLAT VOL. 10 PAGE 335

BEARINGS FROM PLAT VOL. 16 PAGE 156

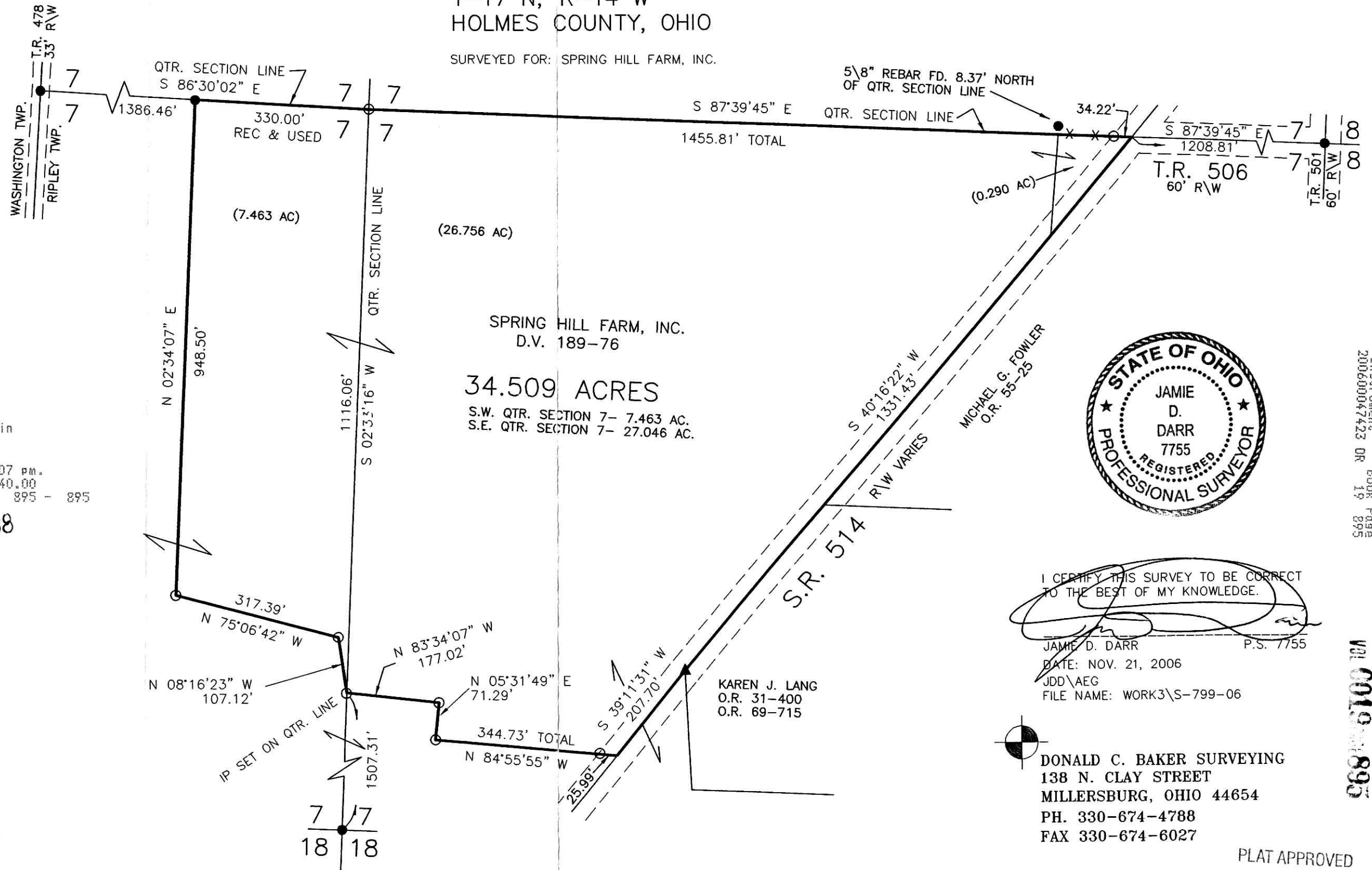
200600047423
 Filed for Record in
 HOLMES COUNTY, OH
 SALLY MILLER
 12-21-2006 At 03:07 pm.
 SMALL PLAT 40.00
 OR Book 19 Page 895 - 895

OR 193p 2938

200600047423
 HOLMES CTY
 TITLE
 MILLERSBURG OH

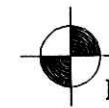
RIPLEY TOWNSHIP
 S.W. & S.E. QTRS. SECTION 7
 T-17 N; R-14 W
 HOLMES COUNTY, OHIO

SURVEYED FOR: SPRING HILL FARM, INC.



I CERTIFY THIS SURVEY TO BE CORRECT TO THE BEST OF MY KNOWLEDGE.

JAMIE D. DARR P.S. 7755
 DATE: NOV. 21, 2006
 JDD/AEG
 FILE NAME: WORK3\S-799-06



DONALD C. BAKER SURVEYING
 138 N. CLAY STREET
 MILLERSBURG, OHIO 44654
 PH. 330-674-4788
 FAX 330-674-6027

PLAT APPROVED

12/12/2006

Instrument 200600047423 OR Book Page 19 895

VOL 0019 PAGE 895