

200600047337
Filed for Record in
HOLMES COUNTY, OH
SALLY MILLER
12-18-2006 At 04:10 pm.
PLAT MED 43.20
OR Book 19 Page 888 - 888
ORV 193 pages 2561 - 2563

Large granite rock at
NE. crnr S.E. 1/4 Sec. 13,
T19N, R15W
Washington Twp.
Holmes Co., Ohio
P.B. 10 Pg. 341

Mary Lou Mackey D.V. 190 Pg. 658
D.V. 234 Pg. 551 P.B. 15 Pg. 11

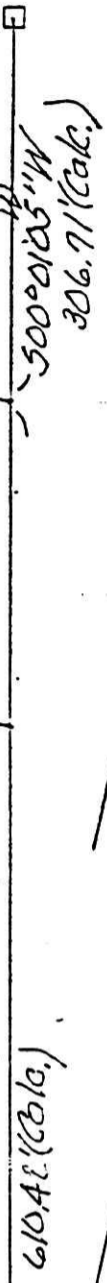
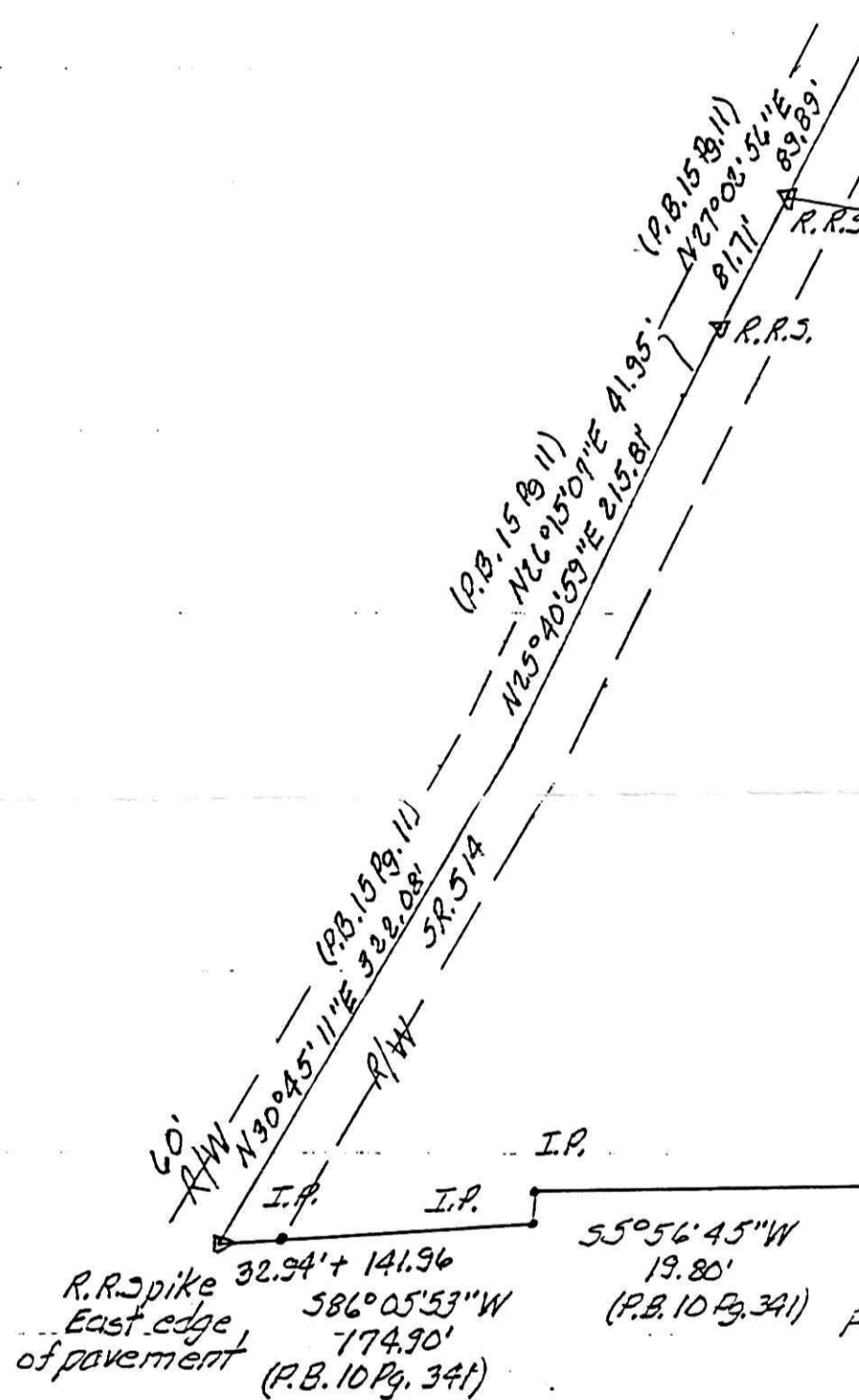
I.P. (P.B. 15 Pg. 11) N85°27'30"E 340.41'
I.P. 579°04'29"E 184.52' (Calc)

(1.7855 Ac.
Tract 1 D.V. 262 Pg. 1)

(8.2231 Ac.)

Mary Lou Mackey & Sandra Bridenthal
D.V. 262 Pgs. 1

10.0086 Ac. Total



I.P. (P.B. 10 Pg. 341)

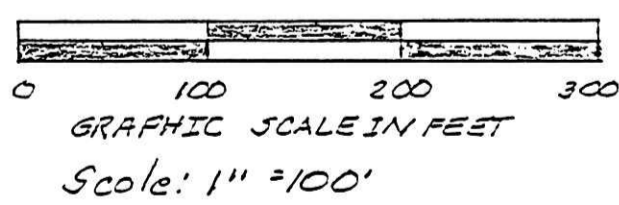
R.R. spike 32.94' + 141.96
East edge of pavement 586°05'53\"/>

I.P. 55°56'45\"/>

Floyd E. & Rhonda K. Root
D.V. 225 Pg. 630
P.B. 10 Pg. 341

200600047337
HOLMES COUNTY TITLE
MILLERSBURG OH 44654

Bearing basis: P.B. 10 Pg. 341 Long dated 10/18/84
Data used: P.B. 10 Pg. 341 (Long)
P.B. 15 Pg. 11 (Shamp)
D.V. 262 Pg. 1-4



This plat and accompanying description
were made from above listed data.
It is not the results of a survey by
the hereon signed author.

It contains 1.7855 acres from Tract 1 of
D.V. 262 Pg. 1 and all of tract 3 of D.V. 262 Pg. 1

This will convey all of grantors lands
East of S.R. 514.

Plot of a tract of land in S.E. 1/4
in Sec. 13, T19N, R15W, Washington
Twp., Holmes Co., Ohio

Robert L. Kasner P.E. P.S.
7007 S.R. 39
Millersburg, Ohio, 44654
330 674 9146

Robert L. Kasner P.S.
9/19/04
Revised 11/02/06



PLAT APPROVED

11/6/2006