

0 200 400

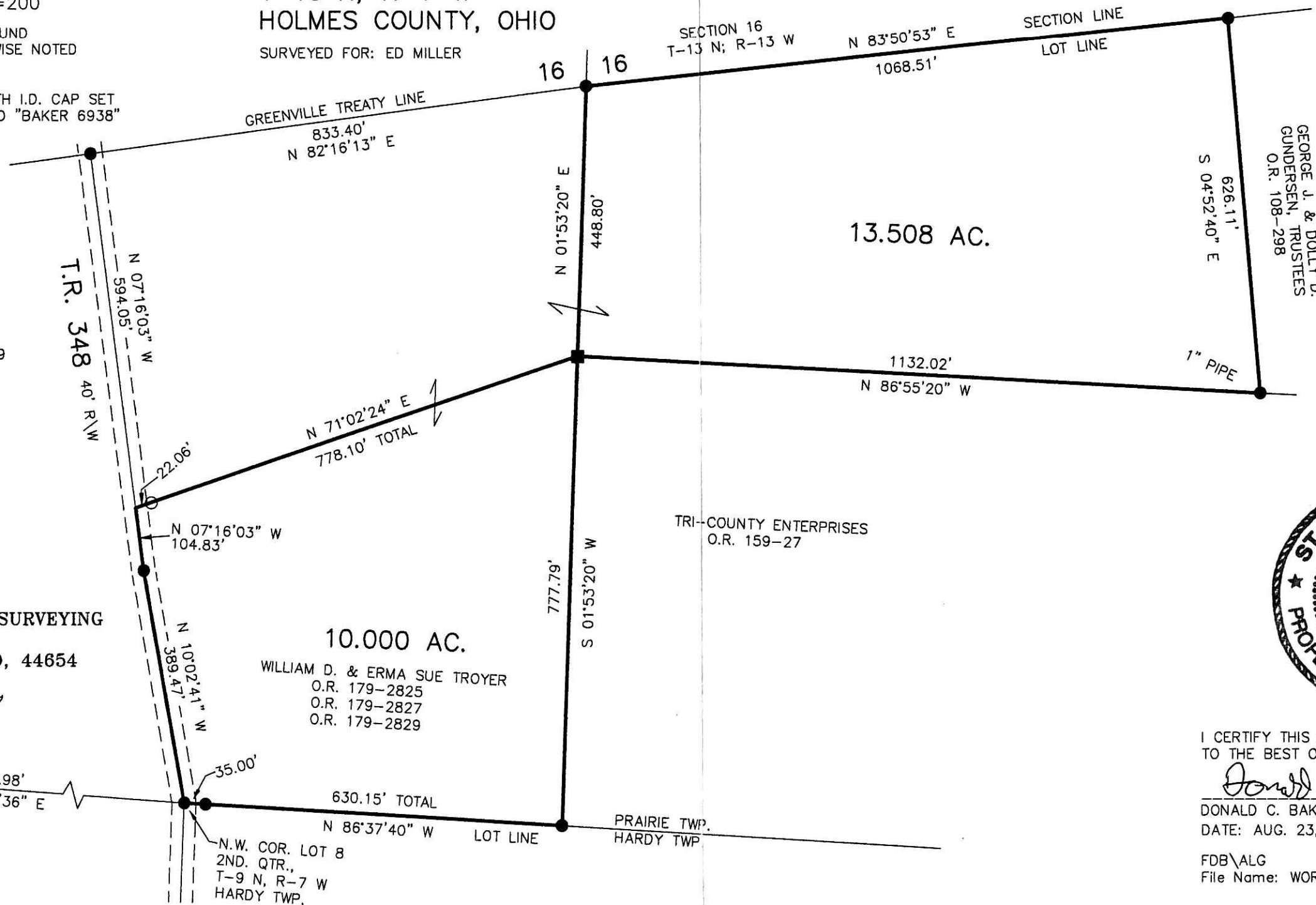


SCALE: 1"=200'

- 5/8" REBAR FOUND UNLESS OTHERWISE NOTED
- STONE FOUND
- 5/8" REBAR WITH I.D. CAP SET I.D. CAP MARKED "BAKER 6938"

PRAIRIE TOWNSHIP
3RD. QTR., LOT 1
T-10 N; R-7 W
HOLMES COUNTY, OHIO

SURVEYED FOR: ED MILLER



REFERENCES

- O.R. VOL. 179 PAGE 2829
 - O.R. VOL. 159 PAGE 27
 - O.R. VOL. 108 PAGE 298
 - PLAT VOL. 18 PAGE 621
 - PLAT VOL. 11 PAGE 30
 - PLAT VOL. 13 PAGE 107
 - PLAT VOL. 16 PAGE 696
- BEARINGS FROM
PLAT VOL. 18 PAGE 621



DONALD C. BAKER SURVEYING
138 N. CLAY ST.
MILLERSBURG, OHIO, 44654
PH. 330-674-4788
FAX. 330-674-6027

LOT 2 | LOT 1

200600046432
Filed for Record in
HOLMES COUNTY, OH
SALLY MILLER
10-24-2006 At 03:27 pm.
SMALL PLAT 40.00
OR Book 19 Page 843 - 843
OR 192 p 1963

200600046432
HOLMES CTY
TITLE
MILLERSBURG, OH



I CERTIFY THIS SURVEY TO BE CORRECT
TO THE BEST OF MY KNOWLEDGE.

Donald C. Baker

DONALD C. BAKER P.S. 6938

DATE: AUG. 23, 2006

FDB\ALG
File Name: WORK2\S-385-06

PLAT APPROVED

9/7/2006

Instrument Book Page
200600046432 OR 19 843