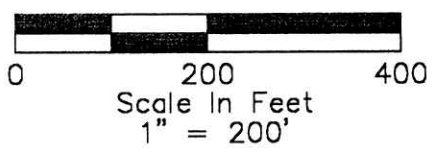


# RIPLEY TOWNSHIP HOLMES COUNTY, OHIO NW QTR. SECTION 18 T-17N, R-14W

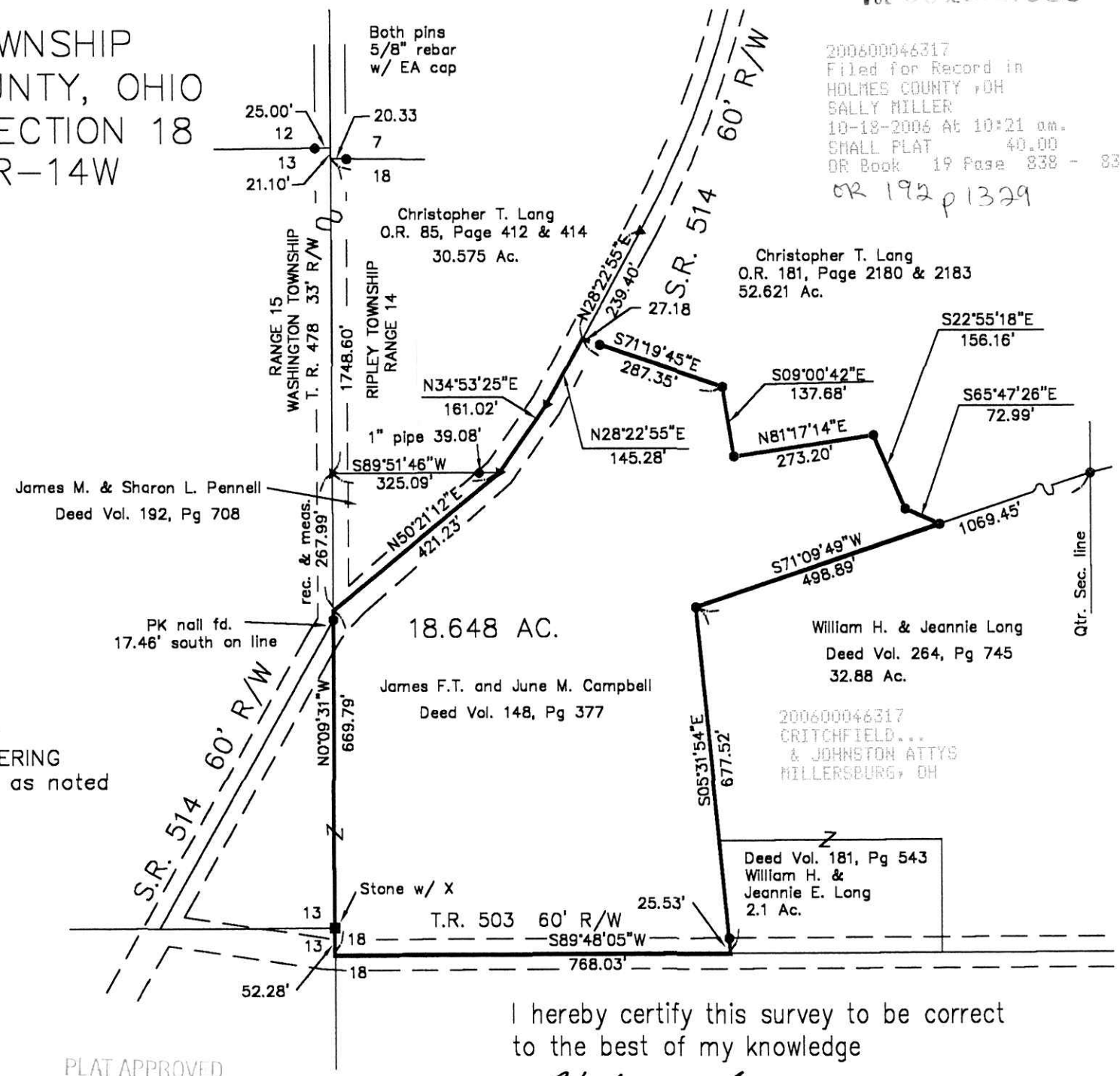
200600046317  
Filed for Record in  
HOLMES COUNTY, OH  
SALLY MILLER  
10-18-2006 At 10:21 am.  
SMALL PLAT 40.00  
OR Book 19 Page 838 - 838  
OR 192 p 1329



- References:
- Plat Vol 18, Pg 55
  - Plat Vol 19, Pg 449
  - Plat Vol 9, Pg 200
  - Plat Vol 14, Pg 119
  - Plat Vol 14, Pg 528
  - Plat Vol 7, Pg 554

Basis of Bearings:  
Plat Vol. 10, Page 507

- Stone Fd.
- I. P. Found 5/8" Rebar with Cap marked ENGINEERING ASSOCIATES, INC. except as noted
- ▲ RR Spike Found



PLAT APPROVED

10/13/2006

I hereby certify this survey to be correct to the best of my knowledge

*William H. Long* 9/30/06  
William H. Long, P.S. #6505 Date

Instrument 200600046317 OR 19 838