

RIPLEY TOWNSHIP  
 S.W. QTR. SECTION 28  
 N.E. QTR. SECTION 32  
 N.W. QTR. SECTION 33  
 T-18 N; R-14 W  
 HOLMES COUNTY, OHIO

SURVEYED FOR: ROGER MURRAY

REFERENCES

DEED VOL. 218 PAGE 698  
 DEED VOL. 240 PAGE 757  
 DEED VOL. 257 PAGE 12  
 DEED VOL. 262 PAGE 238  
 O.R. VOL. 30 PAGE 701  
 O.R. VOL. 31 PAGE 364  
 O.R. VOL. 8 PAGE 722  
 O.R. VOL. 37 PAGE 594  
 O.R. VOL. 109 PAGE 660  
 O.R. VOL. 135 PAGE 251  
 O.R. VOL. 172 PAGE 3147

PLAT VOL. 4 PAGES 39 & 85  
 PLAT VOL. 8 PAGE 722  
 PLAT VOL. 15 PAGE 31  
 PLAT VOL. 17 PAGES 89 & 149  
 PLAT VOL. 19 PAGE 733

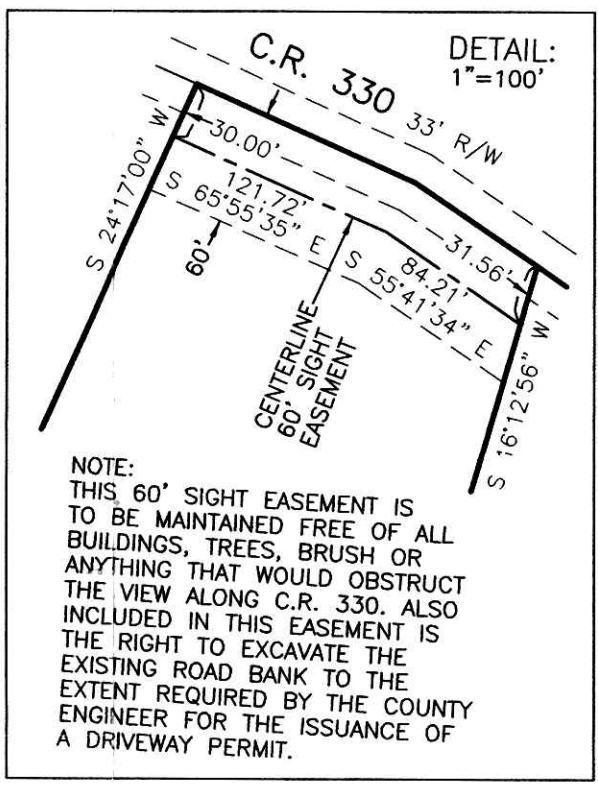
BEARINGS FROM PLAT VOL.19 PAGE 733

0 200 400

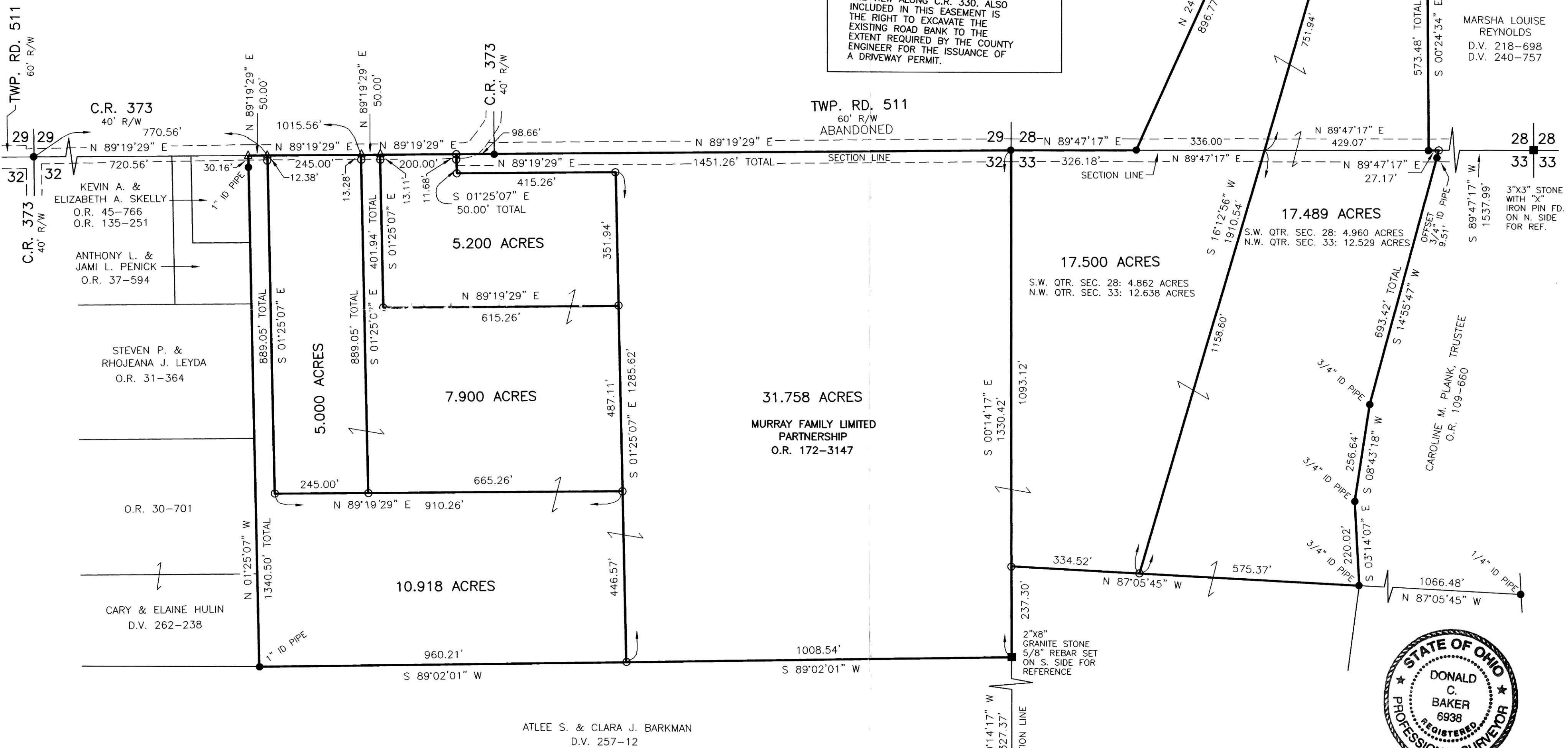


SCALE: 1"=200'

- STONE FOUND
- P.K. NAIL FOUND
- ▲ R.R. SPIKE FOUND
- 5/8" REBAR FOUND UNLESS OTHERWISE NOTED
- △ R.R. SPIKE SET
- 5/8" REBAR SET WITH I.D. CAP I.D. CAP MARKED "BAKER 6938"



200600045899  
 Filed for Record in  
 HOLMES COUNTY, OH  
 SALLY MILLER  
 09-26-2006 At 01:17 pm.  
 PLAT MED 43.20  
 DR Book 19 Page 812 - 812  
 CRV 191pg 3082-3086-3095-  
 3 097-3100  
 200600045899  
 HEARTLAND  
 TITLE  
 MILLERSBURG, OH



I CERTIFY THIS SURVEY TO BE CORRECT TO THE BEST OF MY KNOWLEDGE.

*Donald C. Baker*  
 DONALD C. BAKER P.S. 6938  
 DATE: AUG. 9, 2006  
 FDB/ALG  
 FILE NAME: WORK3\S-436-06\ERZ

DONALD C. BAKER SURVEYING  
 138 N. CLAY STREET  
 MILLERSBURG, OHIO 44654  
 PH. 330-674-4788  
 FAX 330-674-6027

Instrument: 200600045899 DR  
 Book: 19  
 Page: 812

PLAT APPROVED

9/6/2006