

MECHANIC TOWNSHIP  
N.W. & S.W. QTRS. SECTION 1  
T-8 N; R-7 W  
HOLMES COUNTY, OHIO

SURVEYED FOR: MATT POLCYN

REFERENCES:

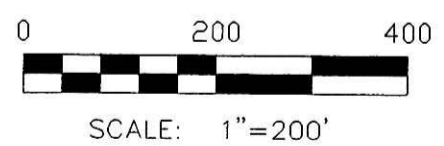
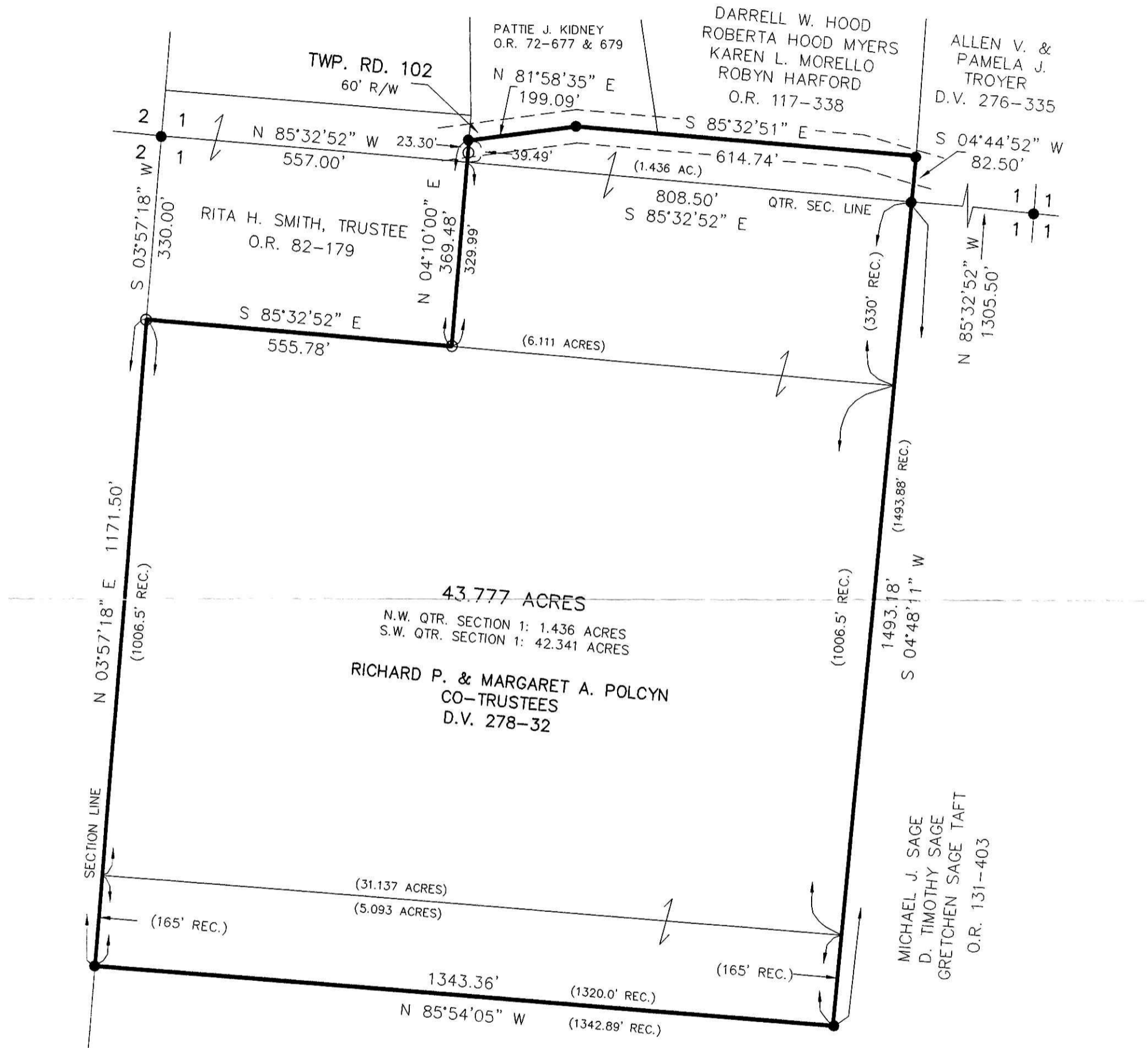
- DEED VOL. 142 PAGE 537
- DEED VOL. 237 PAGE 224
- DEED VOL. 276 PAGE 335
- DEED VOL. 278 PAGE 32
- O.R. VOL. 82 PAGE 179
- O.R. VOL. 117 PAGE 338
- O.R. VOL. 131 PAGE 403
- PLAT VOL. 2 PAGE 336
- PLAT VOL. 16 PAGE 295
- PLAT VOL. 17 PAGE 851
- PLAT VOL. 18 PAGE 464

VOL 0019 PAGE 772

200600044927  
Filed for Record in  
HOLMES COUNTY, OH  
SALLY MILLER  
07-28-2006 At 01:57 pm.  
SMALL PLAT 40.00  
OR Book 19 Page 772 - 772  
OR 190 p 2353

200600044927  
CRITCHFIELD...  
& JOHNSTON ATTYS  
MILLERSBURG, OH

BEARINGS FROM PLAT VOL. 2 PAGE 336



- 5/8" REBAR FOUND
- 5/8" REBAR WITH I.D. CAP SET I.D. CAP MARKED "BAKER 6938"

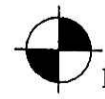


PLAT APPROVED

7/26/2006 EB

I CERTIFY THIS SURVEY TO BE CORRECT TO THE BEST OF MY KNOWLEDGE.

*Donald C. Baker*  
DONALD C. BAKER PS 6938  
DATE: MARCH 13, 2006  
FDB\AEG  
File Name: C:\WORK\S-87-06\ERZ



DONALD C. BAKER SURVEYING  
138 N. CLAY ST.  
MILLERSBURG, OH 44654  
PH. 330-674-4788  
FAX: 330-674-6027