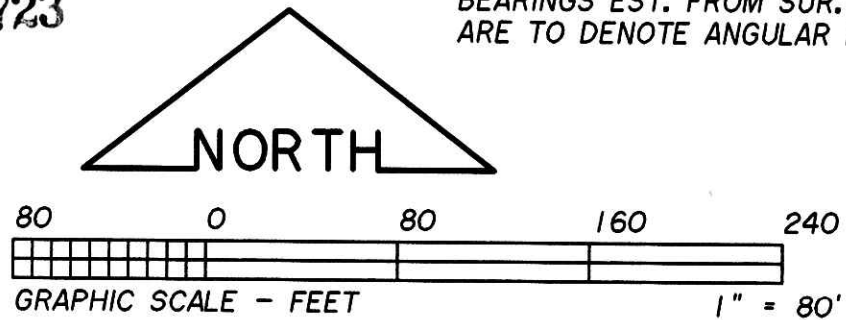


Instrument 200600043904 DR 19 723

VOL 0019 PAGE 723

BEARINGS EST. FROM SUR. PLAT 15/54 AND ARE TO DENOTE ANGULAR MEAS. ONLY.



HEARTLAND SURVEYING, INC			
Jim Shamp			
5210 T.R. 257		MILLERSBURG, OH 44654	
PH: 330-674-4698		FAX: 330-674-0897	
SURVEY		STATE	
THOMAS J. ALEXANDER		OHIO	
COUNTY	TWP.	RNG.	TWP.
HOLMES	RICHLAND	9 WEST	8 NORTH
SECTION 1 & VILLAGE OF GLENMONT		3/6 950301.CRD 3/6 970830.PL	

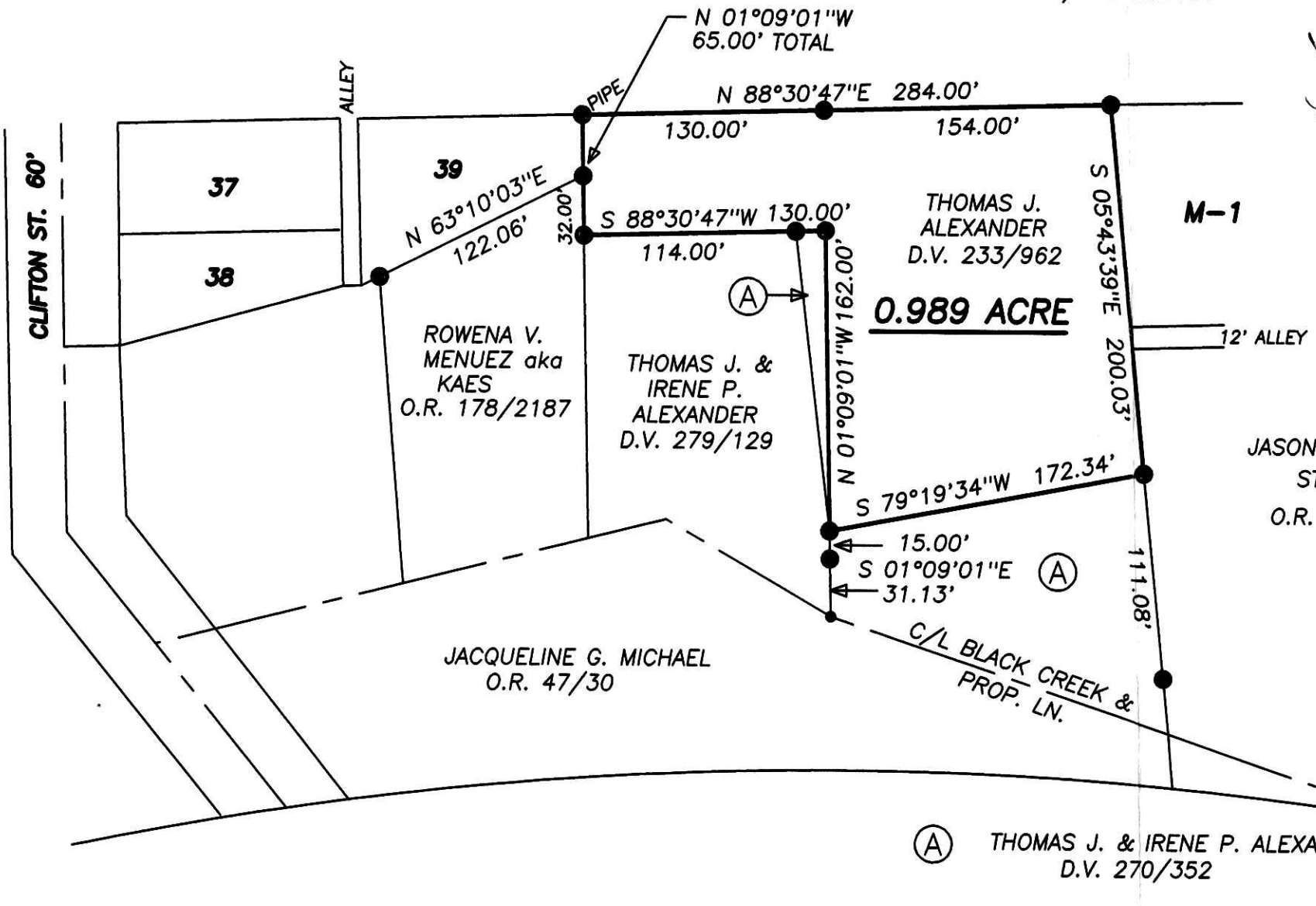
VILLAGE OF GLENMONT

- LEGEND:
- = STONE FD.
 - = IRON PIN/PIPE FD.
 - = POINT-OF-DEPARTURE
 - = 5/8" X 30" RE-BAR W/PLASTIC I.D. CAP SET
 - ⊠ = R/R SPIKE SET
 - △ = R/R SPIKE FD.

I CERTIFY THIS TO BE A TRUE PLAT OF A FIELD SURVEY COMPLETED ON AUGUST 5, 1997:
REVISED JULY 1, 2005



Jim Shamp July 1, 2005
JIM SHAMP, REG. SUR. NO. S-6088



200600043904
Filed for Record in
HOLMES COUNTY, OH
SALLY MILLER
06-01-2006 At 02:58 pm.
SMALL PLAT 40.00
DR Book 19 Page 723 - 723
ORV 189 page 1142

200600043904
SAMUEL M
STEIMEL ATTY
MILLERSBURG, OH

PLAT APPROVED

5/26/2006

REFERENCE DOCUMENTS:
TAX MAPS
DEEDS AS SHOWN
SURVEY PLATS: 15/54

SEE GORRELL FILE