

PRAIRIE TOWNSHIP
N.W. QTR. SECTION 3
T-13 N; R-13 W
HOLMES COUNTY, OHIO

SURVEYED FOR: DENZIL THOMAS

REFERENCES

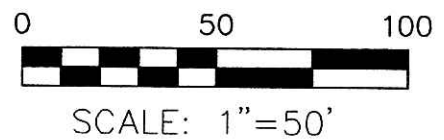
- DEED VOL. 234 PAGE 918
- O.R. VOL. 104 PAGE 589
- O.R. VOL. 187 PAGE 2746
- PLAT VOL. 7 PAGE 788
- PLAT VOL. 8 PAGE 630
- PLAT VOL. 14 PAGE 752
- PLAT VOL. 16 PAGE 577
- PLAT VOL. 18 PAGE 626
- PLAT VOL. 19 PAGE 44
- BEARINGS FROM PLAT VOL. 16 PAGE 577

200600043707
ROBERT
RINFRET ATTY
MILLERSBURG, OH VOL 0019 PAGE 715

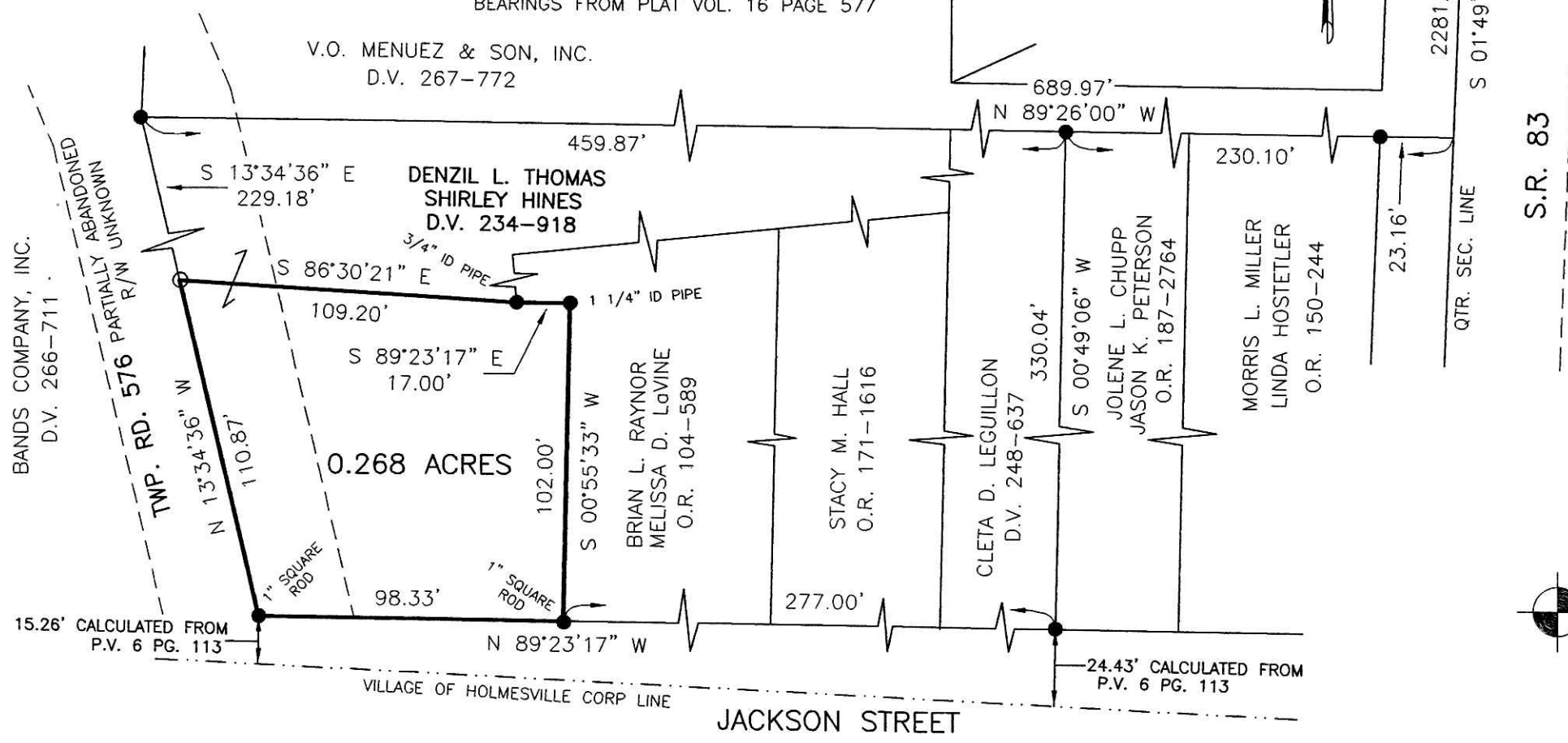
200600043707
Filed for Record in
HOLMES COUNTY, OH
SALLY MILLER
05-23-2006 At 01:08 pm.
SMALL PLAT 40.00
OR Book 19 Page 715 - 715
ORv 189 page 223

APPROVED FOR TRANSFER ONLY
NO SUBDIVISION PLAT REQUIRED
(O.R.C. 711.001 & 711.131)
Lot(s) not for building unless
approved by Board of Health.
HOLMES CO. PLANNING COMM.

By JDD Date 5/1/06



- 5/8" REBAR FOUND
UNLESS OTHERWISE NOTED
- 5/8" REBAR SET WITH I.D. CAP
I.D. CAP MARKED "BAKER 6938"



I CERTIFY THIS SURVEY TO BE CORRECT
TO THE BEST OF MY KNOWLEDGE.

JDD
JAMIE D. DARR P.S. 7755
DATE: APRIL 25, 2006
JDD\AEG
FILE NAME: WORK3\S-284-06\ERZ

DONALD C. BAKER SURVEYING
138 N. CLAY STREET
MILLERSBURG, OHIO 44654
PH. 330-674-4788
FAX 330-674-6027

PLAT APPROVED

5/1/2006

Instrument 200600043707 OR 19 Page 715