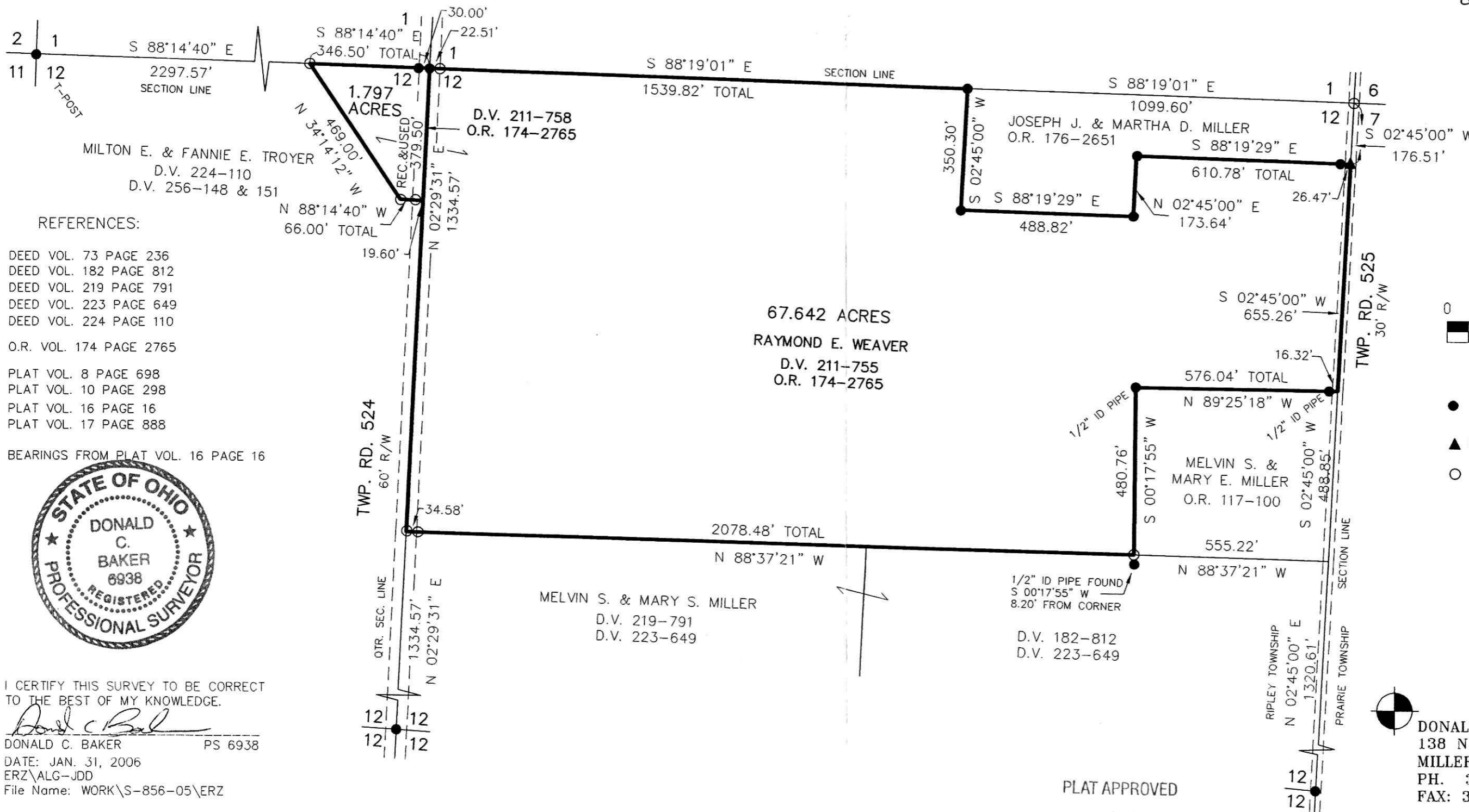


RIPLEY TOWNSHIP
 N.E. & N.W. QTRS. SECTION 12
 T-17 N; R-14 W
 HOLMES COUNTY, OHIO

SURVEYED FOR: RAYMOND WEAVER

200600042645
 EMANUEL J MILLER
 7496 A TWP 524
 SHREVE, OH 44676

200600042645
 Filed for Record in
 HOLMES COUNTY, OH
 SALLY MILLER
 04-03-2006 At 01:55 pm.
 SMALL PLAT 40.00
 OR Book 19 Page 664 - 664
 OR 187 page 2668



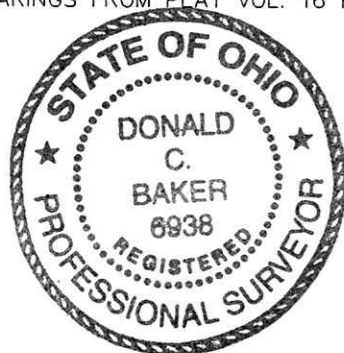
REFERENCES:

- DEED VOL. 73 PAGE 236
- DEED VOL. 182 PAGE 812
- DEED VOL. 219 PAGE 791
- DEED VOL. 223 PAGE 649
- DEED VOL. 224 PAGE 110

O.R. VOL. 174 PAGE 2765

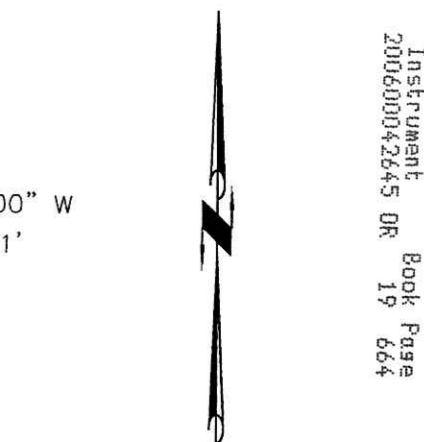
- PLAT VOL. 8 PAGE 698
- PLAT VOL. 10 PAGE 298
- PLAT VOL. 16 PAGE 16
- PLAT VOL. 17 PAGE 888

BEARINGS FROM PLAT VOL. 16 PAGE 16



I CERTIFY THIS SURVEY TO BE CORRECT TO THE BEST OF MY KNOWLEDGE.

Donald C. Baker
 DONALD C. BAKER PS 6938
 DATE: JAN. 31, 2006
 ERZ\ALG-JDD
 File Name: WORK\S-856-05\ERZ



SCALE: 1"=300'

- 5/8" REBAR FOUND UNLESS OTHERWISE NOTED
- ▲ R.R. SPIKE FOUND
- 5/8" REBAR WITH I.D. CAP SET I.D. CAP MARKED "BAKER 6938"

DONALD C. BAKER SURVEYING
 138 N. CLAY ST.
 MILLERSBURG, OH 44654
 PH. 330-674-4788
 FAX: 330-674-6027

PLAT APPROVED
 4/3/2006

Instrument 200600042645 OR Book Page 19 664