

RIPLEY TOWNSHIP
S.E. QTR. SECTION 26
N.E. QTR. SECTION 35
T-18 N; R-14 W
HOLMES COUNTY, OHIO

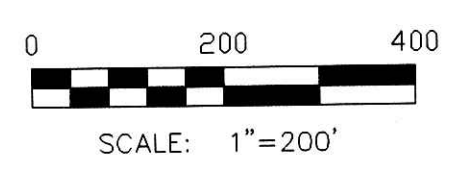
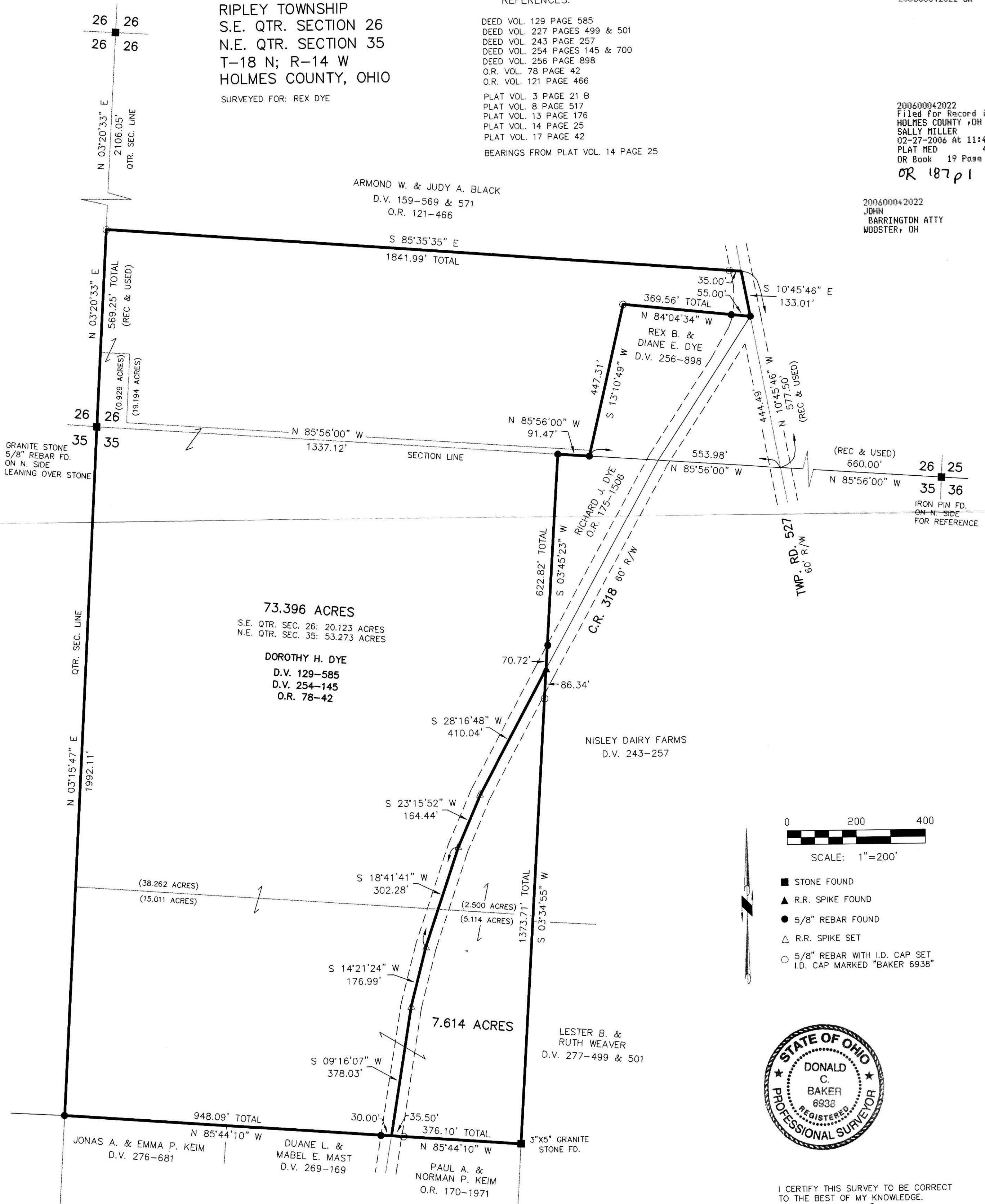
SURVEYED FOR: REX DYE

REFERENCES:

- DEED VOL. 129 PAGE 585
 - DEED VOL. 227 PAGES 499 & 501
 - DEED VOL. 243 PAGE 257
 - DEED VOL. 254 PAGES 145 & 700
 - DEED VOL. 256 PAGE 898
 - O.R. VOL. 78 PAGE 42
 - O.R. VOL. 121 PAGE 466
 - PLAT VOL. 3 PAGE 21 B
 - PLAT VOL. 8 PAGE 517
 - PLAT VOL. 13 PAGE 176
 - PLAT VOL. 14 PAGE 25
 - PLAT VOL. 17 PAGE 42
- BEARINGS FROM PLAT VOL. 14 PAGE 25

200600042022
Filed for Record in
HOLMES COUNTY, OH
SALLY MILLER
02-27-2006 At 11:47 am.
PLAT MED 43.20
OR Book 19 Page 642 - 642
OR 187 p 1

200600042022
JOHN
BARRINGTON ATTY
WOOSTER, OH



- STONE FOUND
- ▲ R.R. SPIKE FOUND
- 5/8" REBAR FOUND
- △ R.R. SPIKE SET
- 5/8" REBAR WITH I.D. CAP SET I.D. CAP MARKED "BAKER 6938"



I CERTIFY THIS SURVEY TO BE CORRECT TO THE BEST OF MY KNOWLEDGE.
Donald C. Baker
DONALD C. BAKER PS 6938
DATE: FEB. 1, 2006
FDB\ERZ-AEG
File Name: WORK\S-31-06\ERZ

DONALD C. BAKER SURVEYING
138 N. CLAY ST.
MILLERSBURG, OH 44654
PH. 330-674-4788
FAX: 330-674-6027

PLAT APPROVED
2/12/2006