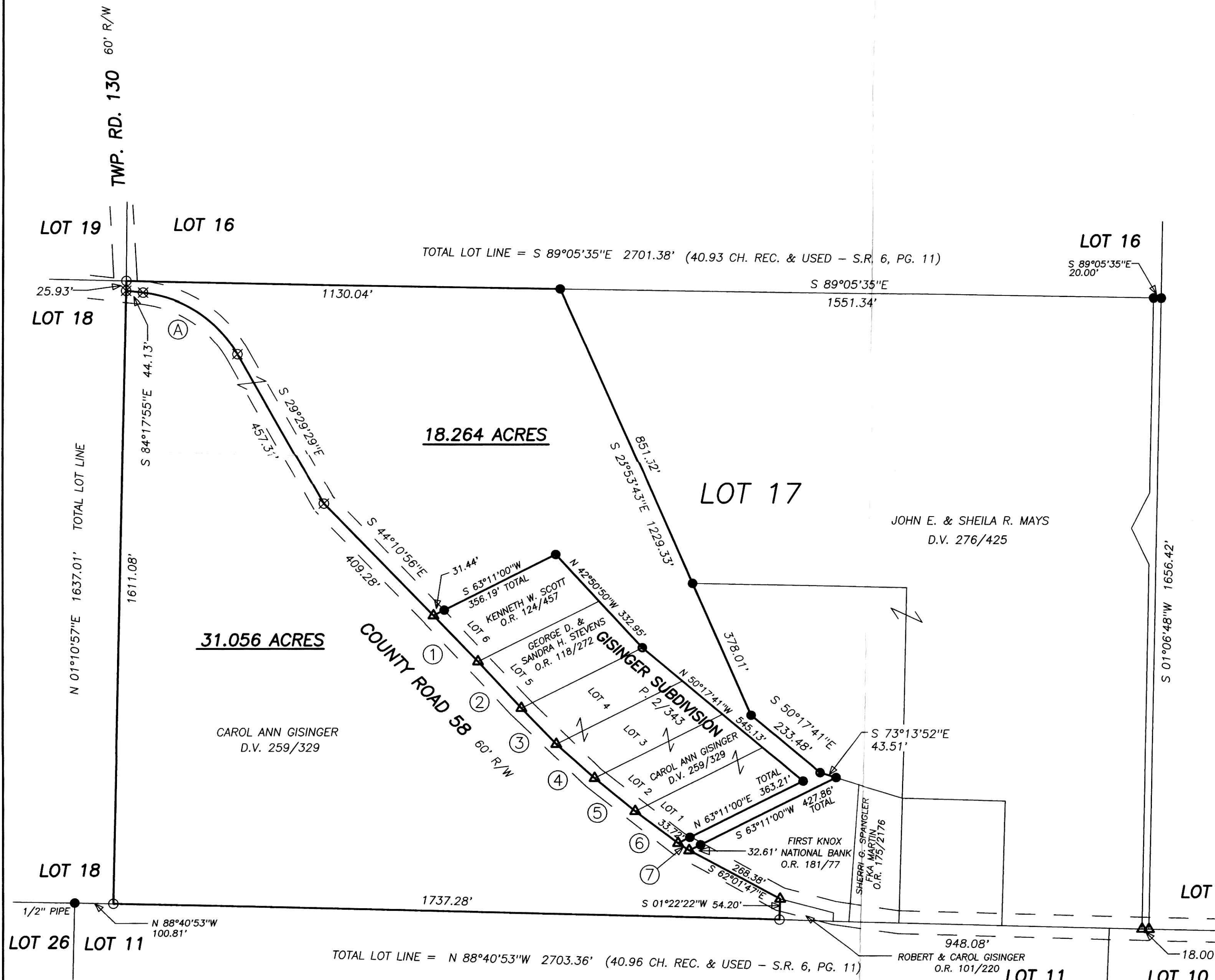
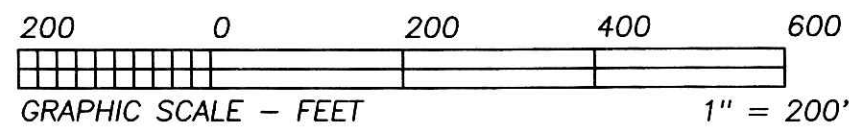
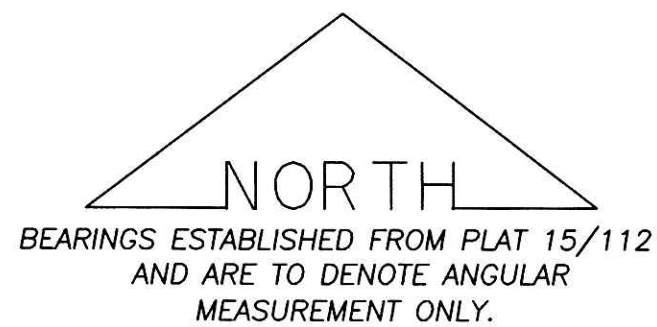


I CERTIFY THIS PLAT & SURVEY TO BE CORRECT TO THE BEST OF MY KNOWLEDGE:



200500039284
 Filed for Record in
 HOLMES COUNTY, OH
 SALLY MILLER
 09-29-2005 At 11:48 am.
 PLAT MED 42-20
 OR Book 19 Page 510
 RECORDERS SPACE
 drv 183 page R92-2010

J. Shamp
 JIM SHAMP, REG. SUR. NO. S-6088 DATE August 17, 2005



COURSE	BEARING	DISTANCE
1	S 43°59'07"E	167.46'
2	S 42°50'50"E	166.47'
3	S 44°08'12"E	130.94'
4	S 48°17'24"E	134.32'
5	S 50°56'57"E	136.97'
6	S 53°23'47"E	139.77'
7	S 56°10'28"E	34.42'

- LEGEND:
- = STONE FD.
 - = 5/8" RE-BAR FD. UNLESS NOTED
 - = POINT-OF-DEPARTURE
 - = 5/8" X 30" RE-BAR W/PLASTIC I.D. CAP SET
 - ⊗ = R/R SPIKE SET
 - △ = R/R SPIKE FD.

REFERENCE DOCUMENTS:
 TAX MAPS
 DEEDS AS SHOWN
 SURVEY PLATS: 15/112, 2/343, 16/447

CURVE	RADIUS	TANGENT	LENGTH	DELTA	DEGREE	CHORD	CH. BEARING
A	318.27'	165.00'	304.44'	54°48'26"	18°00'08"	292.97'	S 56°53'42"E

PLAT APPROVED
9/13/2005 B

HEARTLAND SURVEYING, INC

Jim Shamp
 5210 T.R. 257 MILLERSBURG, OH 44654
 PH: 330-674-4698 FAX: 330-674-0897

SURVEY		STATE	
CAROL ANN GISINGER		OHIO	
COUNTY	TWP.	RNG.	TWP.
HOLMES	MECHANIC	6 WEST	8 NORTH
2ND QUARTER		050707	
PART OF LOT 17		U.S.M.L.	