

SCALE: 1"=100'

- 5/8" REBAR FOUND UNLESS OTHERWISE NOTED
- 5/8" REBAR WITH I.D. CAP SET I.D. CAP MARKED "BAKER 6938"

REFERENCES:

DEED VOL. 197 PAGE 810
 O.R. VOL. 168 PAGE 3029
 O.R. VOL. 160 PAGE 345
 O.R. VOL. 167 PAGE 2261
 PLAT VOL. 1 PAGES 379 & 380
 PLAT VOL. 2 PAGES 358-362
 PLAT VOL. 18 PAGE 700

BEARINGS FROM PLAT VOL. 2 PAGES 358-362



I CERTIFY THIS SURVEY TO BE CORRECT TO THE BEST OF MY KNOWLEDGE.

Donald C. Baker
 DONALD C. BAKER PS 6938

KES\NLP DATE: JULY 1, 2005
 File Name: C:\WORK\S-402-05\MLD

LAKELAND BEACH SUBDIVISION
 PART OF OUTLOTS 1 & 6

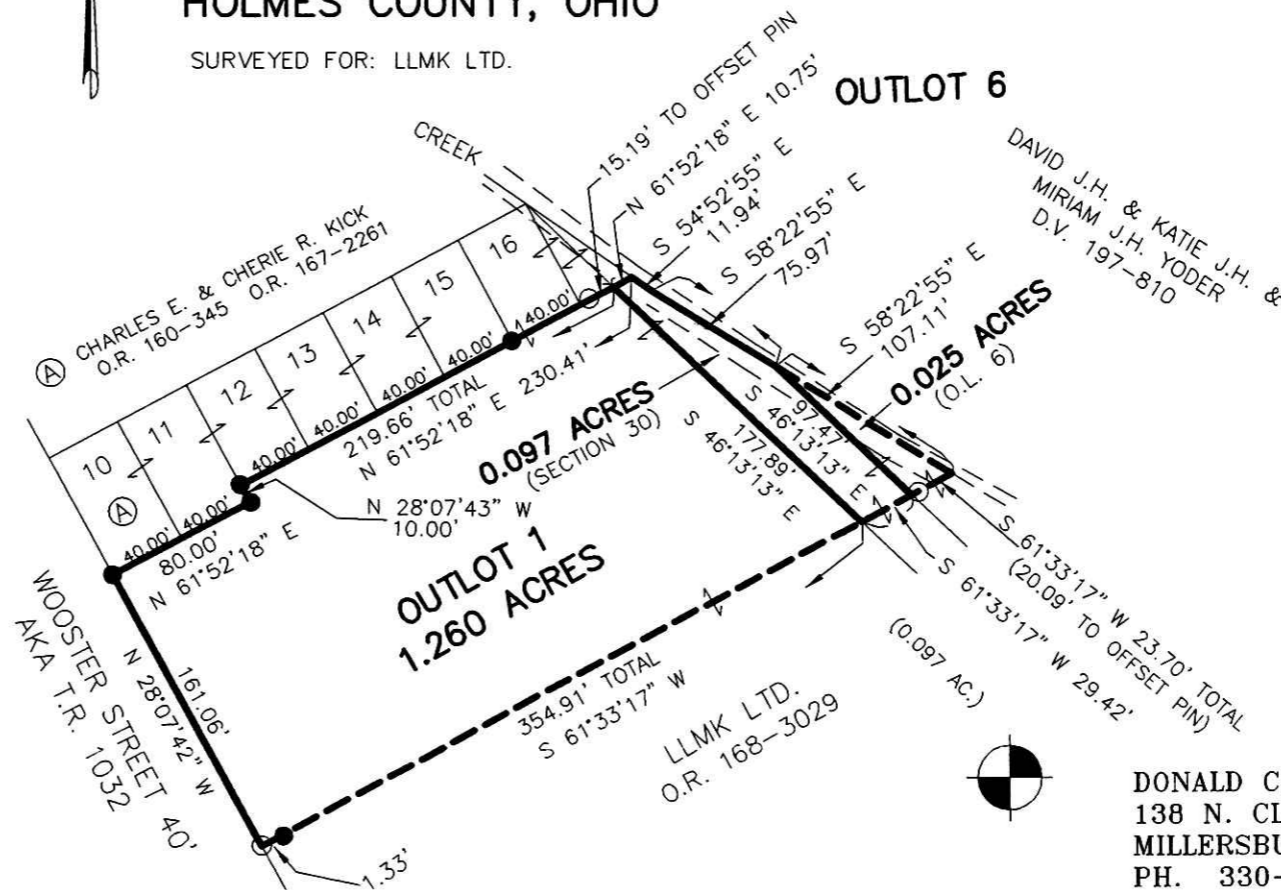
(PLAT VOL. 1 PAGES 379 & 380)

200500039204
 A C S
 MT VERNON, OH

RIPLEY TOWNSHIP
 N.W. QTR. SECTION 30
 T-18 N; R-14 W
 HOLMES COUNTY, OHIO

SURVEYED FOR: LLMK LTD.

200500039204
 Filed for Record in
 HOLMES COUNTY, OH
 SALLY MILLER
 09-23-2005 At 03:44 pm.
 SMALL PLAT 40.00
 DR Book 19 Page 506 - 506
 okv 183 page 1697



APPROVED FOR TRANSFER ONLY
 NO SUBDIVISION PLAT REQUIRED
 (O.R.C. 711.001 & 711.131)
 Lot(s) not for building unless
 approved by Board of Health.
 HOLMES CO. PLANNING COMM.

By *me* Date *8/11/05*

DONALD C. BAKER SURVEYING
 138 N. CLAY ST.
 MILLERSBURG, OH 44654
 PH. 330-674-4788
 FAX: 330-674-6027

PLAT APPROVED

7/29/2005