

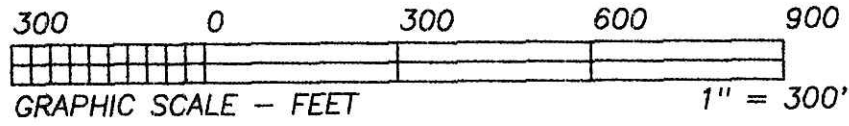
I CERTIFY THIS PLAT & SURVEY TO BE CORRECT TO THE BEST OF MY KNOWLEDGE:

Vol 0019 Page 495

Instrument Book Page
200500039055 OR 19 495
200500039055
Filed for Record in
HOLMES COUNTY OH
SALLY MILLER
09-15-2005 At 02:01 pm.
SMALL PLAT 40.00
OR Book 19 Page 495 - 495
RECORDERS SPACE

ORV 183 page 1018

NORTH
BEARINGS ESTABLISHED FROM D.V. 247/676 AND ARE TO DENOTE ANGULAR MEASUREMENT ONLY.

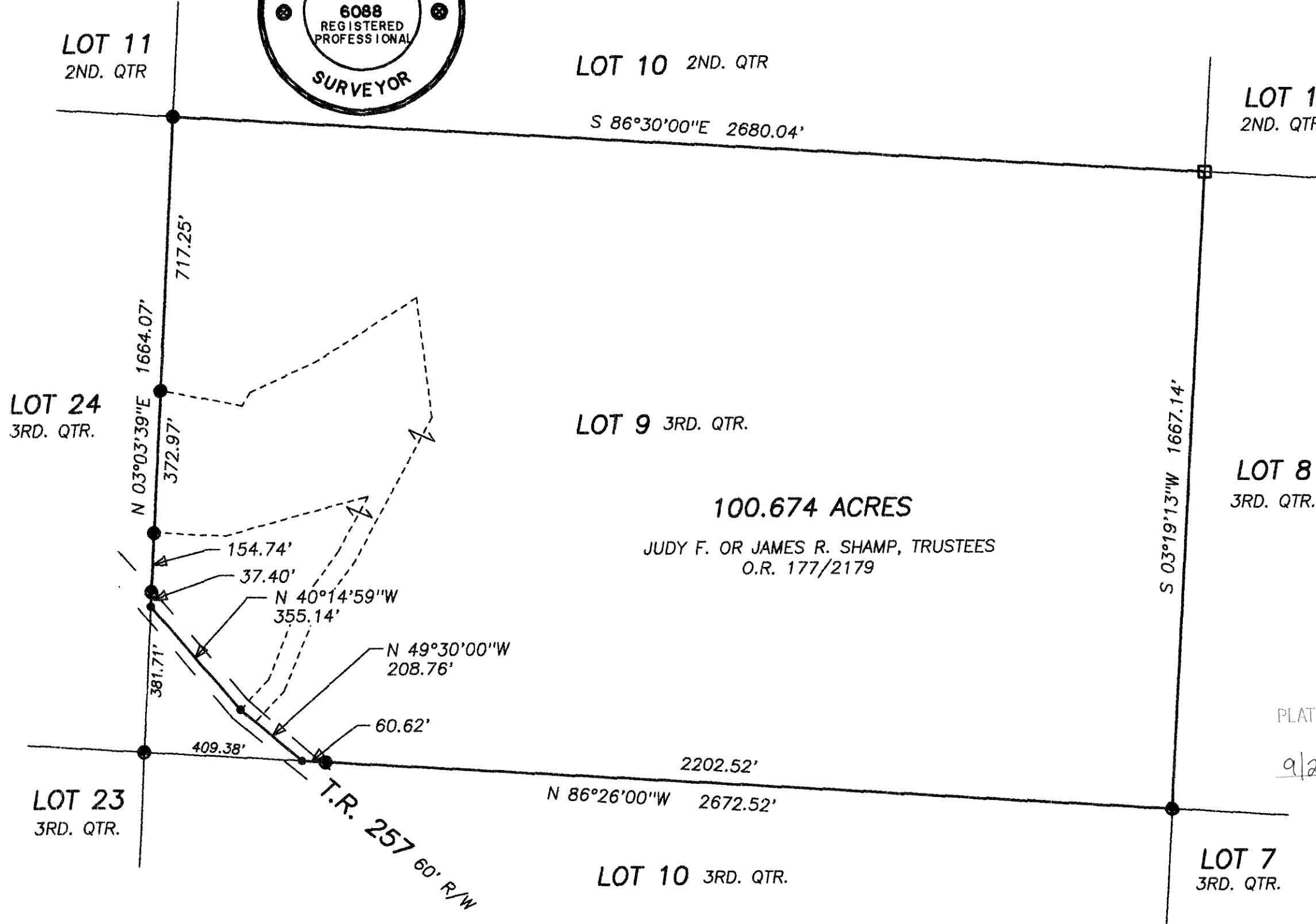


Jim Shamp
JIM SHAMP, REG. SUR. NO. S-6088 DATE July 29, 2005



- LEGEND:
- = STONE FD.
 - = 5/8" RE-BAR FD. UNLESS NOTED
 - = POINT-OF-DEPARTURE
 - = 5/8" X 30" RE-BAR W/PLASTIC I.D. CAP SET
 - ⊗ = R/R SPIKE SET
 - △ = R/R SPIKE FD.

REFERENCE DOCUMENTS:
TAX MAPS
DEEDS AS SHOWN
SURVEY PLATS: 12/464, 17/511
200500039055
BLAIR BOWER, ATTY



PLAT APPROVED

9/2/2005 DB

HEARTLAND SURVEYING, INC		STATE OHIO	
5210 T.R. 257 MILLERSBURG, OH 44654 PH: 330-674-4698 FAX: 330-674-0897		TWP. 9 N	
JIM SHAMP		RNG. 8 W	
JUDY F. OR JAMES R. SHAMP, TRUSTEES		TWP. MONROE	
HOLMES		3RD QUARTER PART OF LOT 9	
3RD QUARTER		050720	