

HEARTLAND SURVEYING, INC

VOL 0019-490

200500038916
Filed for Record in
HOLMES COUNTY, OH
SALLY MILLER
09-09-2005 At 08:42 am.
SMALL PLAT 40.00
DR Book 19 Page 490 - 490
OR 183 pg 458
RECORDERS SPACE

Jim Shamp

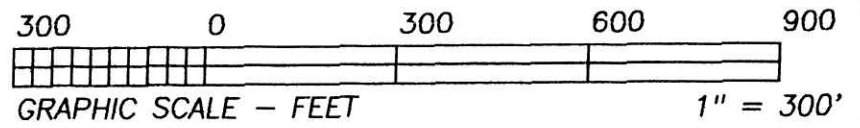
5210 T.R. 257 MILLERSBURG, OH 44654
PH: 330-674-4698 FAX: 330-674-0897

SURVEY		ROBERT P. KAUFFMAN		STATE		OHIO	
COUNTY	TWP.	RNG.	TWP.				
HOLMES	RIPLEY	14 W	18 N				
NORTHEAST QUARTER OF SECTION 25				001205.CRD 001205B.PL1			



BEARINGS ESTABLISHED FROM PLAT 17/798 AND ARE TO DENOTE ANGULAR MEASUREMENT ONLY.

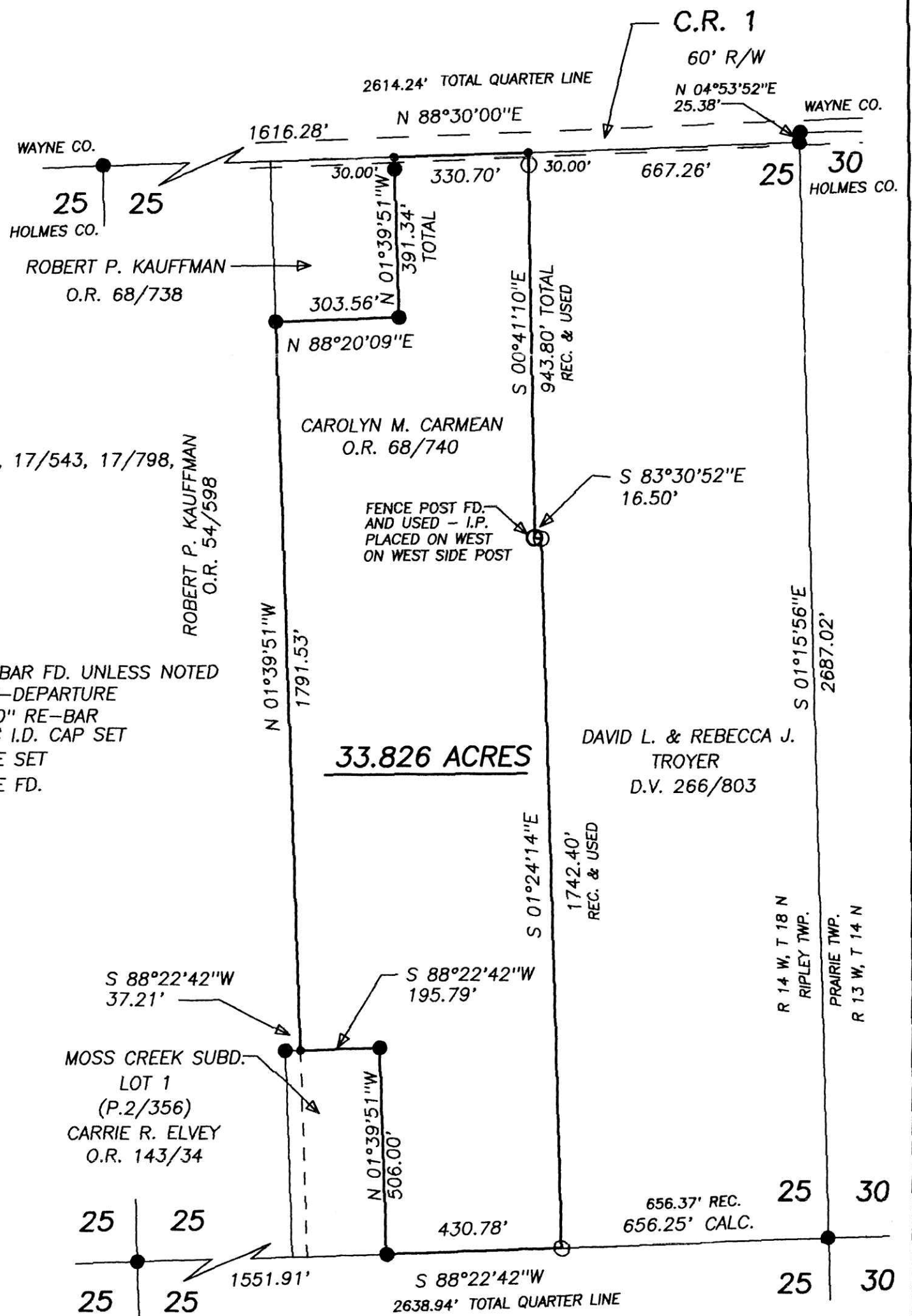
I CERTIFY THIS PLAT & SURVEY TO BE CORRECT TO THE BEST OF MY KNOWLEDGE:



Jim Shamp
July 12, 2005

JIM SHAMP, REG. SUR. NO. S-6088 DATE

200500038916
CRITCHFIELD...
& JOHNSTON ATTYS
MILLERSBURG, OH



REFERENCE DOCUMENTS:

- TAX MAPS
- DEEDS AS SHOWN
- SURVEY PLATS: 14/771, 15/50, 17/543, 17/798, 2/356

- LEGEND:
- = STONE FD.
 - = 5/8" RE-BAR FD. UNLESS NOTED
 - = POINT-OF-DEPARTURE
 - = 5/8" X 30" RE-BAR W/PLASTIC I.D. CAP SET
 - ⊗ = R/R SPIKE SET
 - △ = R/R SPIKE FD.

PLAT APPROVED

8/31/2005 *DS*

