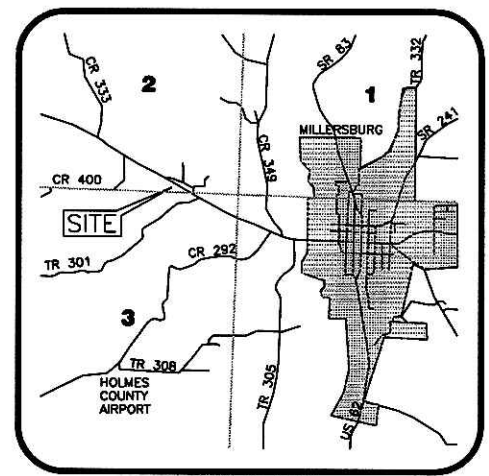
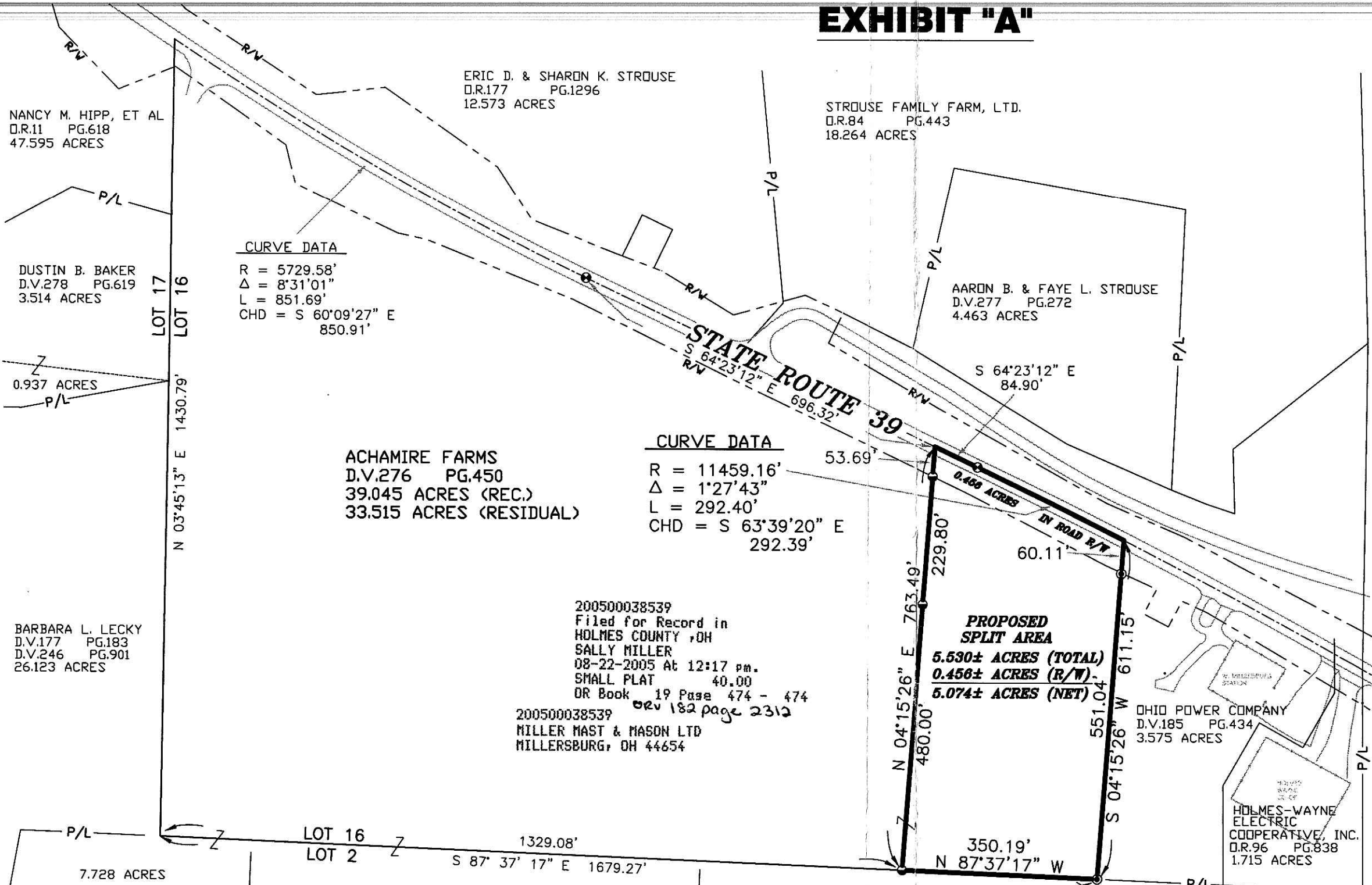


# EXHIBIT "A"

PLAT APPROVED  
*8/4/2005*

VOL 0019 PAGE 474



VICINITY MAP  
(NOT TO SCALE)

## LEGEND

- ODOT MONUMENT FOUND
- IRON PIN FOUND
- RAILROAD SPIKE FOUND
- ⊙ COPPERWELD ROD IN CONC. FOUND
- ⦿ 5/8" REBAR & CAP SET "CENTRAL SURV. CO., LTD."

SUBJECT TO ALL LEGAL STREETS, HIGHWAYS, RIGHTS-OF-WAYS, ALLEYS, EASEMENTS, AGREEMENTS AND/OR CONDITIONS OF RECORD, IF ANY.

BARBARA L. LECKY  
D.V.177 PG.183  
D.V.246 PG.901  
26.123 ACRES

NANCY M. HIPPI, ET AL  
D.R.11 PG.618  
47.595 ACRES

ERIC D. & SHARON K. STROUSE  
D.R.177 PG.1296  
12.573 ACRES

STROUSE FAMILY FARM, LTD.  
D.R.84 PG.443  
18.264 ACRES

AARON B. & FAYE L. STROUSE  
D.V.277 PG.272  
4.463 ACRES

ACHAMIRE FARMS  
D.V.276 PG.450  
39.045 ACRES (REC.)  
33.515 ACRES (RESIDUAL)

200500038539  
Filed for Record in  
HOLMES COUNTY, OH  
SALLY MILLER  
08-22-2005 At 12:17 pm.  
SMALL PLAT 40.00  
DR Book 19 Page 474 - 474  
OR 182 page 2312  
200500038539  
MILLER MAST & MASON LTD  
MILLERSBURG, OH 44654

OHIO POWER COMPANY  
D.V.185 PG.434  
3.575 ACRES

HOLMES-WAYNE  
ELECTRIC  
COOPERATIVE, INC.  
D.R.96 PG.838  
1.715 ACRES

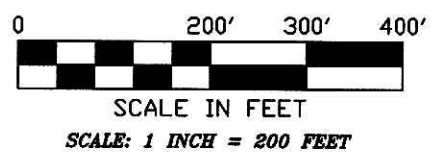
PAUL D. & VIOLA  
HERSHBERGER 7.604± ACS.  
OR. 65, PG. 881

SUZAN D. EARNEY  
D.V.212 PG.699  
10.507 ACRES

BEVERLY GIANNONE  
D.R.38 PG.549  
61.071 ACRES



*William L. Willis*  
WILLIAM L. WILLIS  
P.S. NO. 7168



**BASIS OF BEARINGS:**  
BEARINGS SHOWN HEREON ARE BASED ON THE BEARING OF S 04°15'26" W FOR EASTERLY LINE OF SAID ACHAMIRE FARMS LANDS AS DETERMINED FROM COMPUTATION ON THE OHIO STATE PLANE COORDINATE SYSTEM, N.A.D. 83, OHIO NORTH ZONE.

**SITUATE:**  
SITUATED IN THE STATE OF OHIO, COUNTY OF HOLMES, PART OF LOT 16 OF THE 2ND QUARTER, TOWNSHIP OF HARDY, IN TOWNSHIP 9 N, RANGE 7 W AND BEING PART OF THE SAME LANDS CONVEYED TO ACHAMIRE FARMS, AN OHIO PARTNERSHIP AS RECORDED IN DEED BOOK 276, PAGE 450, ALL REFERENCES CONTAINED HEREIN ARE MADE TO THE HOLMES COUNTY RECORDER'S RECORDS, HOLMES COUNTY, OHIO.

**Central Surveying Co., Ltd.**  
7563 East Main Street  
Reynoldsburg, Ohio 43068

FOR:  
**Ohio Power Company**  
PROPOSED SPLIT - 5.530± ACRES  
HOLMES COUNTY, OHIO

Drawn By: JS	Checked By: WW
Scale: 1"=200'	Date: 05/16/05
File Name: 20050204-split11x17.dwg	Drawing Number:
Revisions: 05/27/05	2005-0204