

KNOX TOWNSHIP
4TH. QTR., LOTS 26 & 27
T-9 N; R-9 W
HOLMES COUNTY, OHIO

SURVEYED FOR: JANET LAHM

200500038486
HEARTLAND
TITLE
MILLERSBURG, OH

REFERENCES:

- O.R. VOL. 175 PAGE 3333
- O.R. VOL. 175 PAGE 3335
- AT VOL. 19 PAGE 225
- PLAT VOL. 2 PAGE 330
- PLAT VOL. 5 PAGE 118
- PLAT VOL. 7 PAGE 200

BEARINGS FROM PLAT VOL. 2 PAGE 330

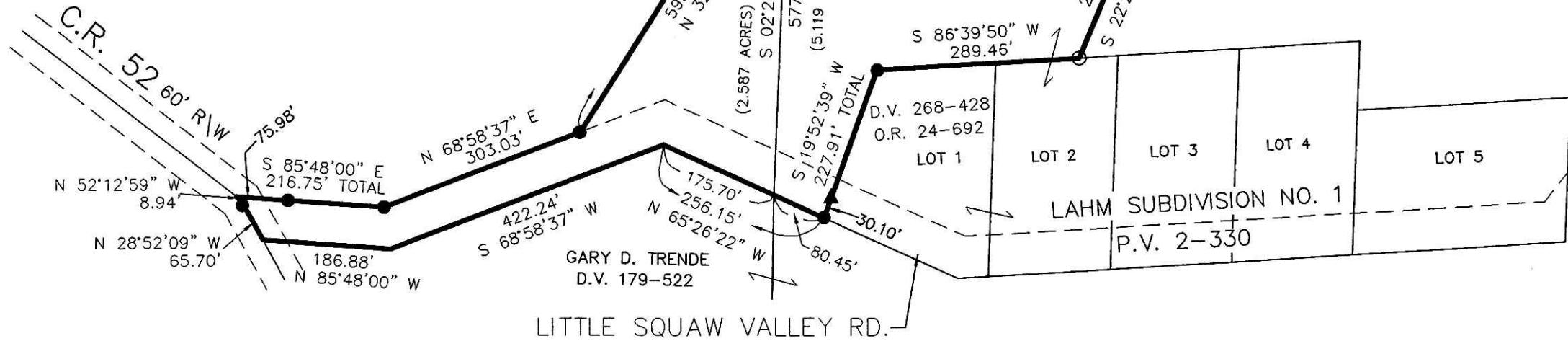
200500038486
Filed for Record in
HOLMES COUNTY, OH
SALLY MILLER
08-18-2005 At 02:08 pm.
SMALL PLAT 40.00
OR Book 19 Page 473 - 473
ORV 182 page 2034

LOT 27
LOT 26
S.C. INVESTMENTS
INC.
O.R. 175-3333
LUTHER L. LAHM, TRUSTEE
O.R. 175-3335



SCALE: 1"=200'

- 5/8" REBAR FOUND
- 5/8" REBAR WITH I.D. CAP SET
I.D. CAP MARKED "BAKER 6938"



DONALD C. BAKER SURVEYING
138 N. CLAY ST.
MILLERSBURG, OH 44654
PH. 330-674-4788
FAX: 330-674-6027

LITTLE SQUAW VALLEY RD.
A 60' PRIVATE ROAD
(AKA P.R. 231)
P.V. 2-330
P.V. 5-118



I CERTIFY THIS SURVEY TO BE CORRECT TO THE BEST OF MY KNOWLEDGE.

Donald C. Baker
DONALD C. BAKER PS 6938
DATE: MAY 13, 2005
FDB/AEG
File Name: C:\WORK\S-187-05\DCB-ERZ

PLAT APPROVED

8/5/2005

Instrument
200500038486 OR
Book
19
Page
473