

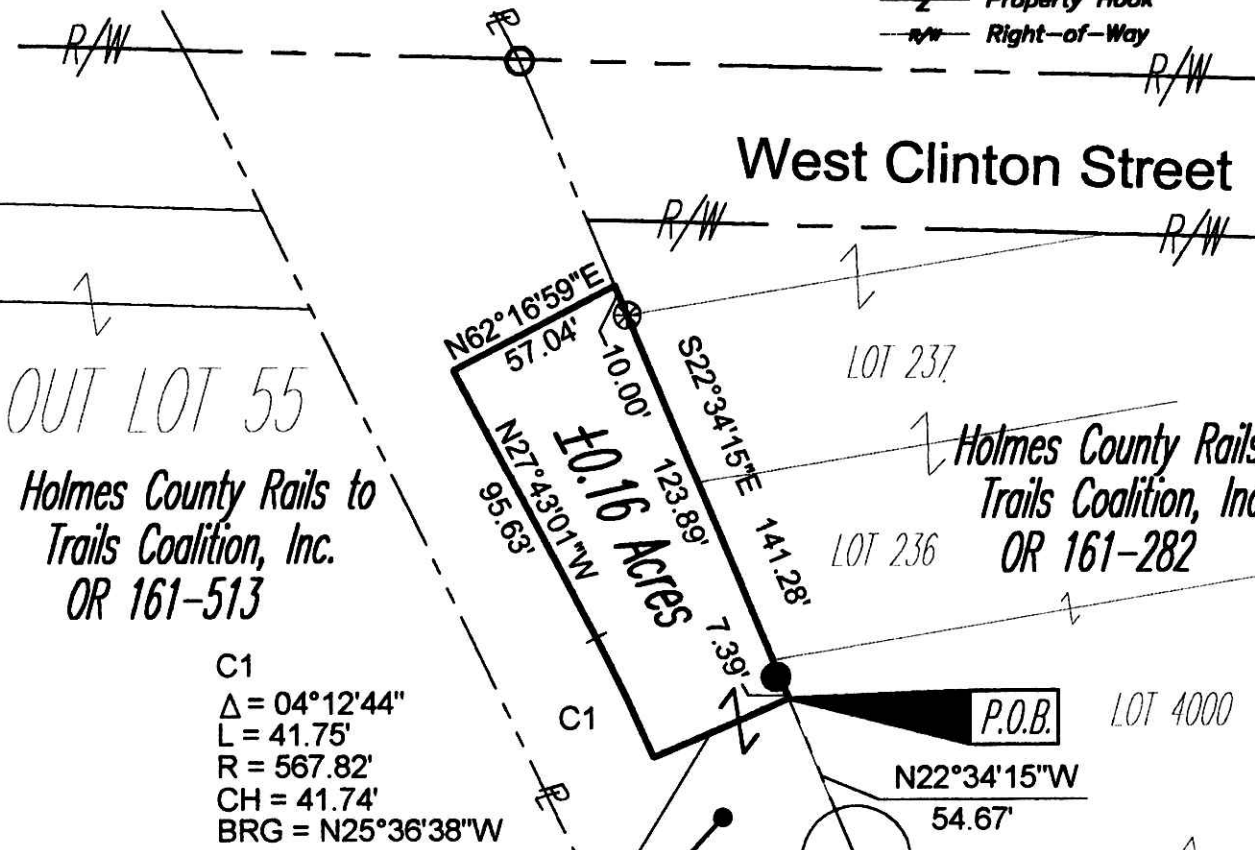
Instrument Book Page
200500036156 OR 19 364

VOL 0019 PAGE 364

SITUATED IN

The State of Ohio, County of Holmes, Village of Millersburg,
and being a part of Outlot 55, T9, R7.

- LEGEND**
- ⊙ Iron Pin Set, 5/8" rebar
 - Iron Pin Found
 - Iron Pipe Found
 - ⊗ Drill Hole
 - Z- Property Hook
 - R/W- Right-of-Way



OUT LOT 55

Holmes County Rails to
Trails Coalition, Inc.
OR 161-513

Holmes County Rails to
Trails Coalition, Inc.
OR 161-282

C1
 $\Delta = 04^{\circ}12'44''$
 $L = 41.75'$
 $R = 567.82'$
 $CH = 41.74'$
 $BRG = N25^{\circ}36'38''W$

LOT SPLIT

APPROVED BY THE
 VILLAGE OF MILLERSBURG
 PLANNING COMMISSION
 NO PLAT REQUIRED

Victor Estates, Inc.
 DR 260-548

Southwest Corner of Lot 4000,
 Replat of Lots 232-235
 Plat Volume 18, Page 705

SW Corn. Lot 4000

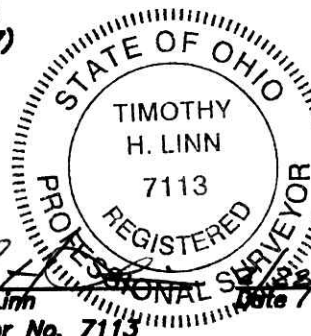
DETAIL

REFERENCES

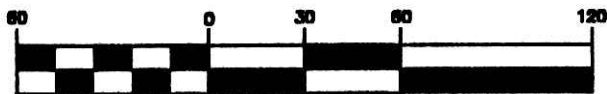
- DR 260-548
- OR 161-513
- OR 161-282
- Plat Book 1, Page 19 (Irvin & Enos's 2nd Addition)
- Plat Book 18, Page 685 (Replat of Lots 232-235 & Vacated Alleys)
- Plat Book 18, Page 705 (Retracement Survey of Lot 236 & Lot 237)
- Tax Map MV-3

BASIS OF BEARINGS

Bearings are based on NAD83, North Zone, Ohio State
Plane Coordinate System, as per GPS observations
made in April 1999.



GRAPHIC SCALE



(IN FEET)
1 inch = 60 ft.

Project No.: HCT-402



Linn Engineering, Inc. 740-452-7434
 Civil Engineering Consultants
 P.O. Box 2086 Zanesville, Ohio 43702-2086

PLAT APPROVED

4/7/2005