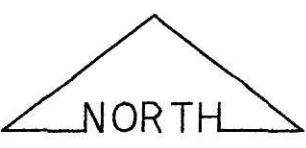
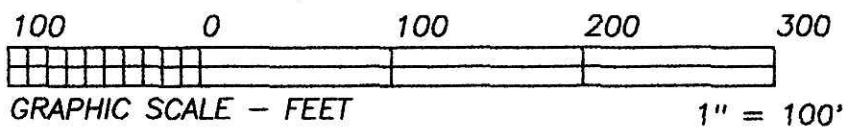


200500035959
 Filed for Record in
 HOLMES COUNTY, OH
 SALLY MILLER
 04-01-2005 At 10:44 am.
 SMALL PLAT 40.00
 OR Book 19 Page 353 - 353
 ORv 179 page 107



BEARINGS ESTABLISHED FROM PLAT 14/695 AND ARE TO DENOTE ANGULAR MEASUREMENT ONLY.

REFERENCE DOCUMENTS:
 TAX MAPS
 DEEDS AS SHOWN
 SURVEY PLATS:
 13/11 14/695

RAY-MAR HERITAGE PARTNERSHIP
 D.V. 247/418 & D.V. 260/633

SONJA H. BIRD, TRUSTEE
 O.R. 125/779

- LEGEND:
- = STONE FD.
 - = 5/8" RE-BAR FD. UNLESS NOTED
 - = POINT-OF-DEPARTURE
 - = 5/8" X 30" RE-BAR W/PLASTIC I.D. CAP SET
 - ⊗ = R/R SPIKE SET
 - △ = R/R SPIKE FD.

Instrument 200500035959 OR Book Page 19 353

APPROVED FOR TRANSFER ONLY:
 NO SUBDIVISION PLAT REQUIRED;
 (O.R.C. 711.001 & 711.131)
 Lot(s) not for building unless
 approved by Board of Health,
 HOLMES CO. PLANNING COMM.
 By AS Date 3/31/05

200500035959
 CRITCHFIELD,.....
 MILLERSBURG, OH 44654

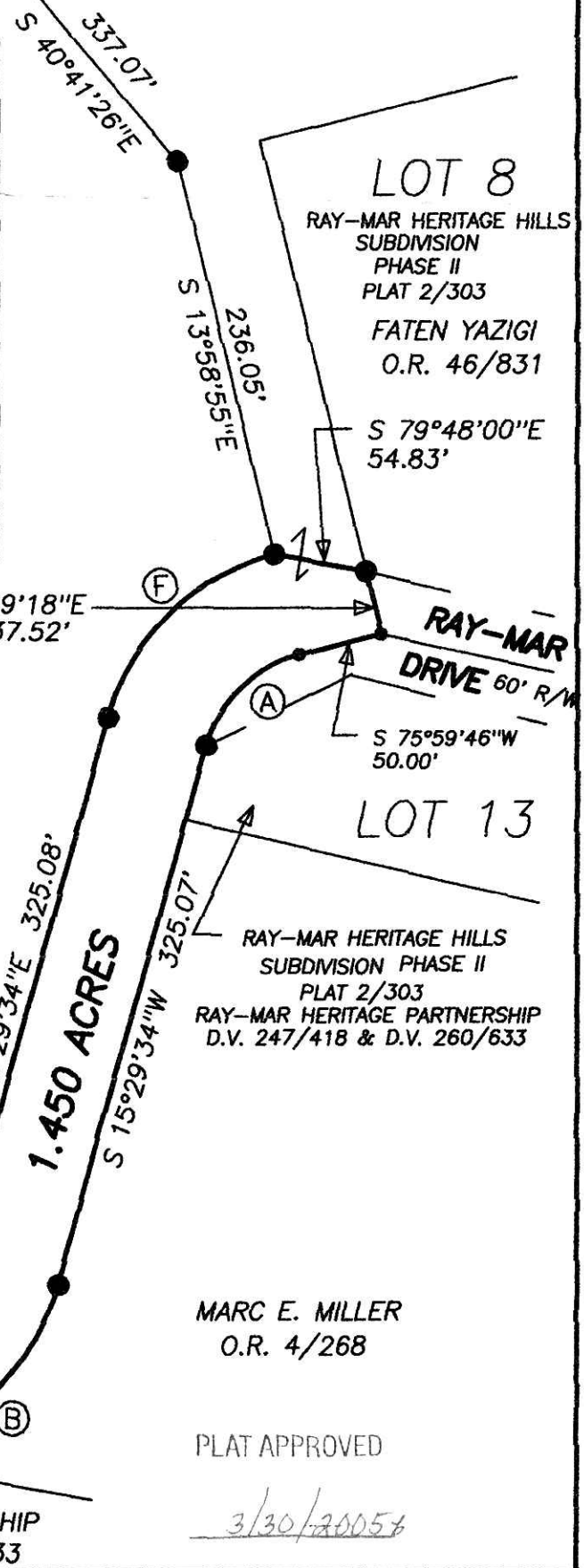
CURVE	RADIUS	TANGENT	LENGTH	DELTA	DEGREE	CHORD	CH.BEARING
A	75.00'	43.74'	79.20'	60°30'12"	76°23'40"	75.57'	S 45°44'40"W
B	130.00'	120.57'	194.42'	85°41'14"	44°04'25"	176.80'	S 58°19'57"W
C	70.00'	36.04'	66.57'	54°29'19"	81°51'04"	64.09'	S 73°55'54"W
D	130.00'	66.94'	123.63'	54°29'19"	44°04'25"	119.02'	N 73°55'54"E
E	70.00'	64.92'	104.69'	85°41'14"	81°51'04"	95.20'	N 58°19'57"E
F	135.00'	78.74'	142.56'	60°30'12"	42°26'29"	136.03'	N 45°44'40"E

HEARTLAND SURVEYING, INC

Jim Shamp

5210 T.R. 257 MILLERSBURG, OH 44654
 PH: 330-674-4698 FAX: 330-674-0897

SURVEY		STATE	
SONJA H. BIRD, TRUSTEE		OHIO	
COUNTY	TWP.	RNG.	TWP.
HOLMES	HARDY	7 W	9 N
2ND QUARTER, PART OF LOT 1		040208.CRD 040907A	



I CERTIFY THIS PLAT & SURVEY TO BE CORRECT TO THE BEST OF MY KNOWLEDGE:

Jim Shamp
 JIM SHAMP, REG. SUR. NO. S-6088 DATE September 27, 2004



MARC E. MILLER
 O.R. 4/268

PLAT APPROVED

3/30/2005

