

BEARINGS ESTABLISHED FROM PLAT 10/107 AND ARE TO DENOTE ANGULAR MEAS. ONLY.



VOL 0019 PAGE 276

- LEGEND:
- = STONE FD.
 - = 5/8" RE-BAR FD. UNLESS NOTED
 - = POINT-OF-DEPARTURE
 - = 5/8" X 30" RE-BAR W/PLASTIC I.D. CAP SET
 - ⊗ = R/R SPIKE SET
 - △ = R/R SPIKE FD.
 - ✱ = MAG NAIL SET

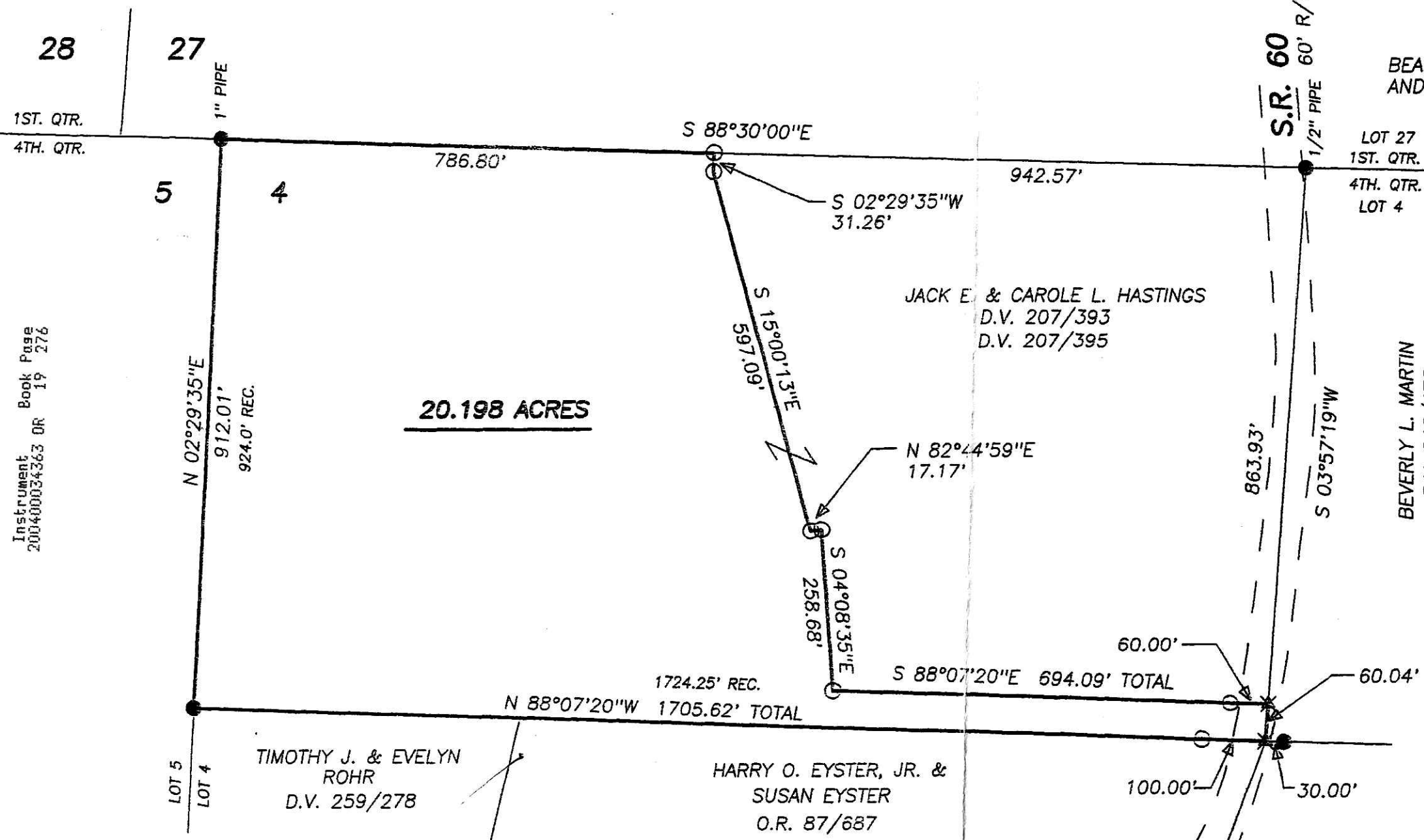
200400034363
 Filed for Record in
 HOLMES COUNTY, OH
 SALLY MILLER
 12-15-2004 At 12:54 pm.
 SMALL PLAT 40.00
 OR Book 19 Page 276 - 276
 ORV 177 page 294

BEVERLY L. MARTIN
 D.V. 246/472
 D.V. 281/536

200400034363
 BLAIR A
 BOWER ATTY
 MILLERSBURG, OH

PLAT APPROVED

12/9/2004



REFERENCE DOCUMENTS:
 TAX MAPS
 DEEDS AS SHOWN
 SURVEY PLATS: 8/493, 8/839, 10/107,
 12/98, 12/539



I CERTIFY THIS PLAT & SURVEY TO BE CORRECT TO THE BEST OF MY KNOWLEDGE:

J. Shamp

JIM SHAMP, REG. SUR. NO. S-6088

DECEMBER 17, 2003

DATE

HEARTLAND SURVEYING, INC			
Jim Shamp			
5210 T.R. 257		MILLERSBURG, OH 44654	
PH: 330-674-4698		FAX: 330-674-0897	
SURVEY JACK E. & CAROLE L. HASTINGS		STATE OHIO	
COUNTY HOLMES	TWP. MONROE	RNG. R-8 W	TWP. T-9 N
4TH QUARTER, LOT 4		031203	