

Large beech tree  
I. Pipe 881.00'  
Total 786.21'

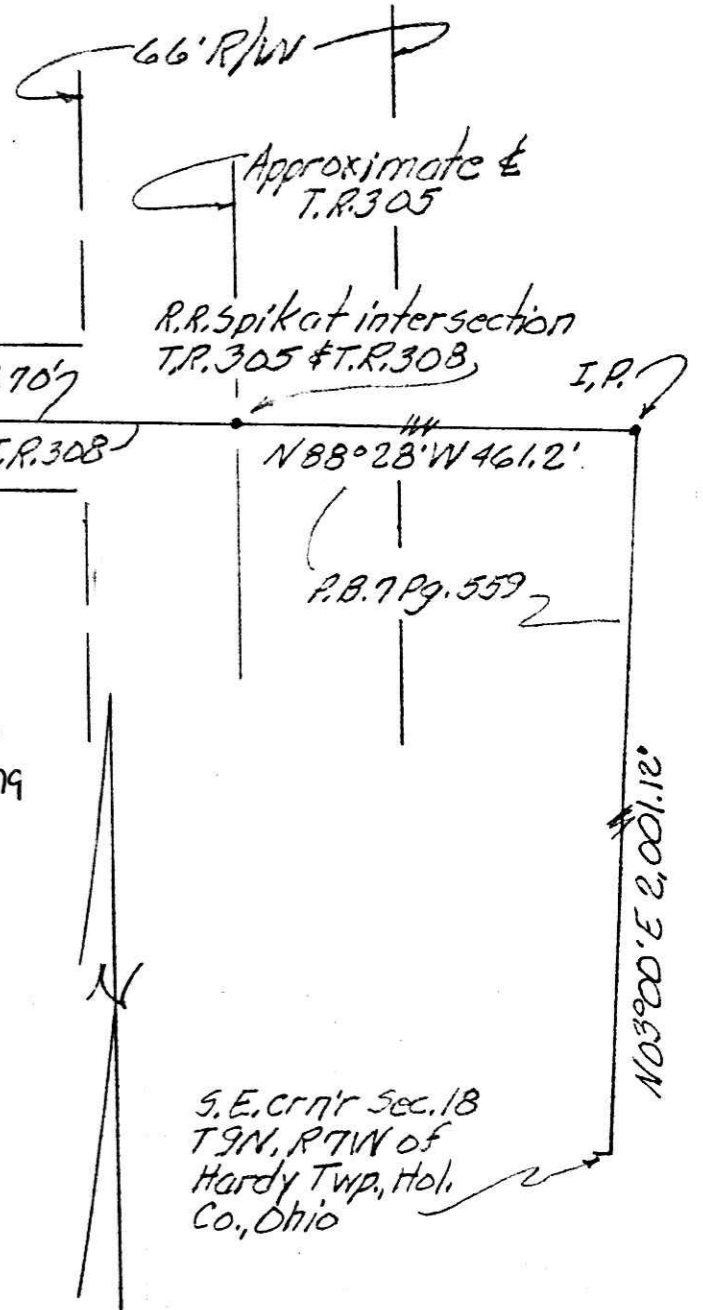
Ronald L. Rowland, trustee  
O.R. 155 Pg. 533 P.B. 10 Pg. 857

David & D. Christina Swank  
to  
Ronald L. Rowland, trustee  
0.0543 acres part of  
D.V. 174 Pg. 561 P.B. 5 Pg. 51.

Ronald L. Rowland, trustee  
to  
David & D. Christina Swank  
0.1103 acres part of  
O.R. 155 Pg. 533 P.B. 10 Pg. 857

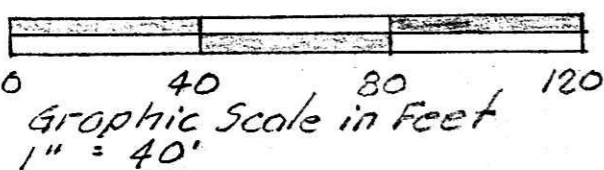
David & D. Christina Swank  
D.V. 174 Pg. 561 P.B. 5 Pg. 51

David & D. Christina Swank  
to  
Ronald L. Rowland, trustee  
0.0543 acres  
P.B. 10 Pg. 857



S.E. crnr Sec. 18  
T9N, R7W of  
Hardy Twp, Hol.  
Co., Ohio

Data used:  
P.P. 10 Pg. 857 (Bearing basis)  
P.B. 5 Pg. 51  
O.R. 155 Pg. 533  
D.V. 174 Pg. 561



Robert L. Kasner P.S. 5193  
7007 S.R. 39  
Millersburg, Ohio, 44654  
3306749146  
Robert L. Kasner P.S. 5193



PLAT OF A SURVEY FOR  
David & D. Christina Swank  
&  
Ronald L. Rowland (trustee)  
Grantees & Grantors (Both)  
situated in Sec 18, T9N, R7W  
Hardy Twp., Holmes Co., Ohio  
3/21/04

200400033376  
FRENCH RIDGE  
TITLE  
MILLERSBURG, OH

200400033376  
Filed for Record in  
HOLMES COUNTY, OH  
SALLY MILLER  
10-21-2004 At 03:41 pm.  
SMALL PLAT 40.00  
OR Book 19 Page 217 - 217  
OR Vol 175 page 2877/2879

APPROVED FOR TRANSFER ONLY  
NO SUBDIVISION PLAT REQUIRED  
(O.R.C. 711.001 & 711.131)  
Lot(s) not for building unless  
approved by Board of Health.  
HOLMES CO. PLANNING COMM.

PLAT APPROVED

By [Signature] Date 10/10/2004 10/10/2004