

MECHANIC TOWNSHIP
N.E. QTR. SECTION 3
T-8 N; R-6 W
HOLMES COUNTY, OHIO

SURVEYED FOR: DAN RABER

Instrument Book Page
200400031897 DR 19 135

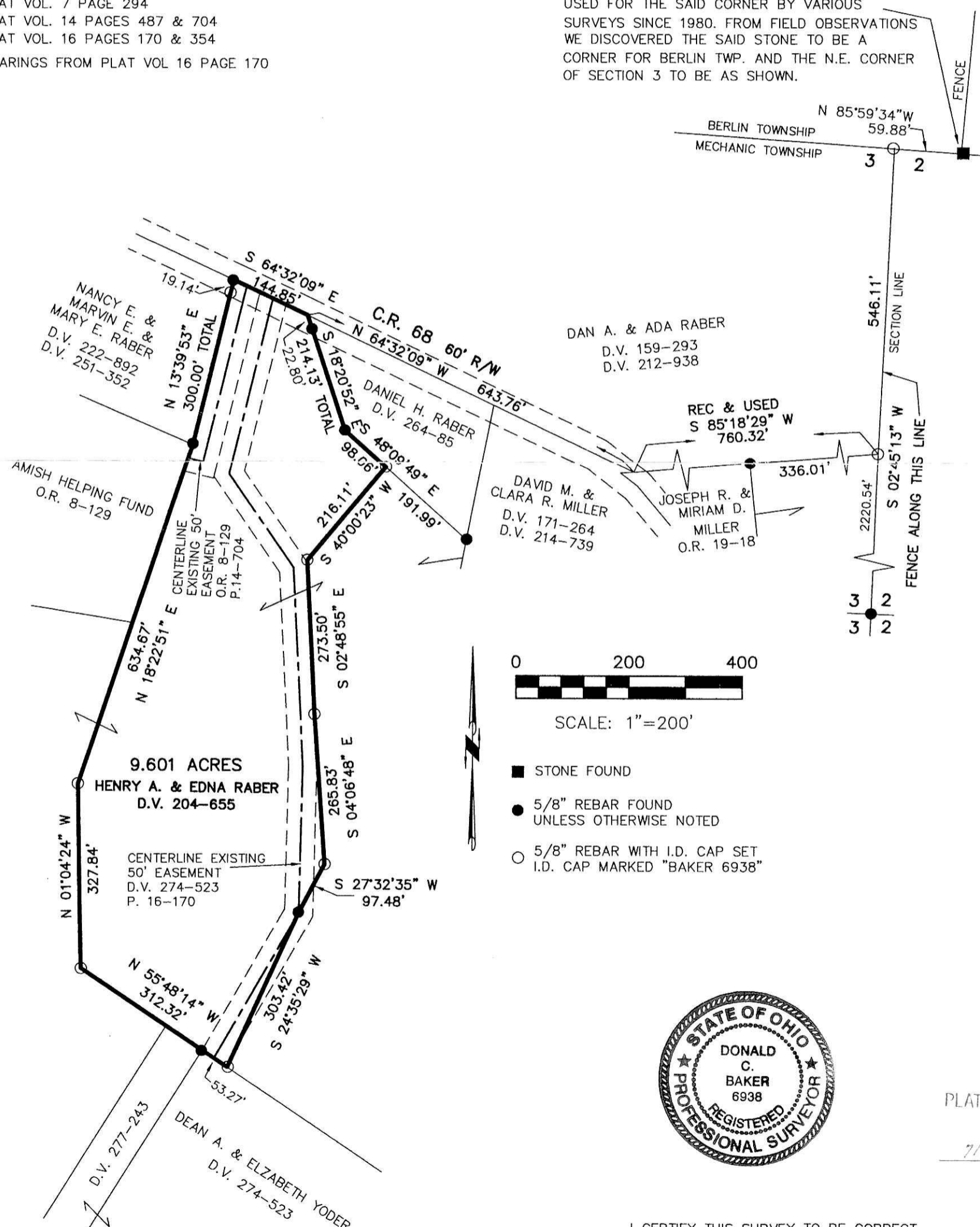
200400031897
PAUL MILLER LAW OFFICE
MILLERSBURG, OH 44654

200400031897
Filed for Record in
HOLMES COUNTY, OH
SALLY MILLER
07-26-2004 At 12:11 pm.
SMALL PLAT 40.00
DR Book 19 Page 135 - 135
CR Vol 174 page 59

REFERENCES

- DEED VOL. 204 PAGE 655
- DEED VOL. 222 PAGE 892
- DEED VOL. 251 PAGE 352
- DEED VOL. 264 PAGE 85
- DEED VOL. 274 PAGE 523
- DEED VOL. 277 PAGE 243
- O.R. VOL. 8 PAGE 192
- PLAT VOL. 7 PAGE 294
- PLAT VOL. 14 PAGES 487 & 704
- PLAT VOL. 16 PAGES 170 & 354
- BEARINGS FROM PLAT VOL 16 PAGE 170

NOTE: PLAT VOL. 5 PAGE 142 (JULY 1972) AND
PLAT VOL. 8 PAGE 785 (NOV.1980) SHOWS
THIS STONE AS BEING THE N.E. CORNER
OF SECTION 3. THIS STONE HAS BEEN
USED FOR THE SAID CORNER BY VARIOUS
SURVEYS SINCE 1980. FROM FIELD OBSERVATIONS
WE DISCOVERED THE SAID STONE TO BE A
CORNER FOR BERLIN TWP. AND THE N.E. CORNER
OF SECTION 3 TO BE AS SHOWN.



PLAT APPROVED
7/23/2004

I CERTIFY THIS SURVEY TO BE CORRECT
TO THE BEST OF MY KNOWLEDGE.

Donald C. Baker
DONALD C. BAKER P.S. 6938
DATE: MARCH 11, 2004

KES\AEG
File Name: WORK2\S-112-04\ERZ

DONALD C. BAKER SURVEYING
138 N. CLAY ST.
MILLERSBURG, OHIO, 44654
PH. 330-674-4788
FAX. 330-674-6027