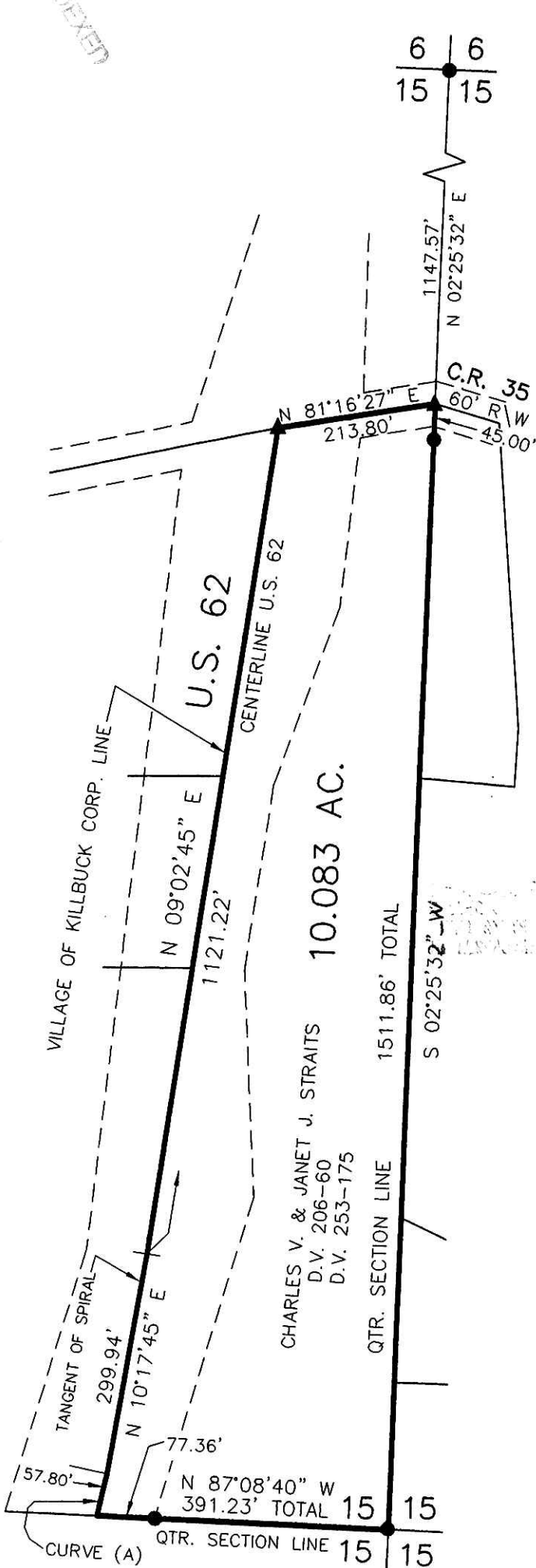


KILLBUCK TOWNSHIP
N.W. QTR. SECTION 15
T-8 N; R-7 W
HOLMES COUNTY, OHIO

SURVEYED FOR: NORMAN SIGLER

200400029597
Filed for Record in
HOLMES COUNTY, OH
SALLY MILLER
03-26-2004 At 01:00 pm.
SMALL PLAT 40.00
OR Book 19 Page 22 - 22
OR vol 170 page 3393

INDEXED



SCALE: 1"=200'

- ▲ R.R. SPIKE FOUND
- 5/8" REBAR FOUND UNLESS OTHERWISE NOTED

REFERENCES:

- DEED VOL. 206 PAGE 60
- PLAT VOL. 9 PAGE 36
- PLAT VOL. 8 PAGE 774
- PLAT VOL. 18 PAGE 161
- PLAT VOL. 11 PAGE 72
- PLAT VOL. 14 PAGE 658

BEARINGS FROM PLAT
VOL. 8 PAGE 774

CURVE (A)

$\Delta=01^{\circ}26'42''$
 $R=2291.83'$
 $L=57.80'$
 $T=28.90'$
 $C \text{ LEN}=57.80'$
 $BRG=N 13^{\circ}31'06'' E$



I CERTIFY THIS SURVEY TO BE CORRECT
TO THE BEST OF MY KNOWLEDGE.

Donald C. Baker

DONALD C. BAKER PS 6938
 FDB\AEG DATE: FEB. 26, 2004
 File Name: C:\JOBS\S-88-04

PLAT APPROVED

3/26/2004



DONALD C. BAKER SURVEYING
 138 N. CLAY ST.
 MILLERSBURG, OH 44654
 PH. 330-674-4788
 FAX: 330-674-6027