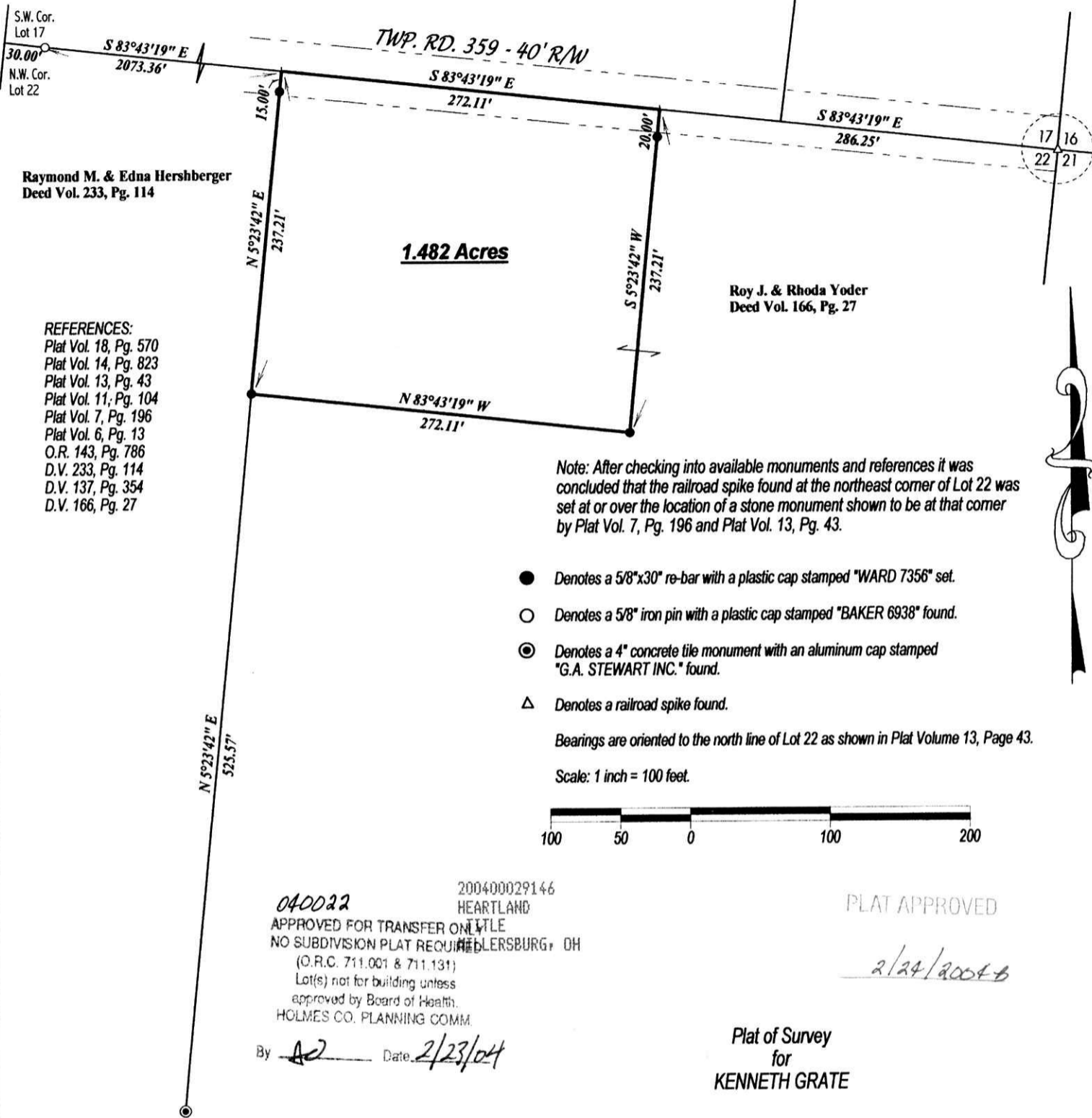


These properties are subject to all legal highways, rights-of-way, easements, leases and restrictions of record or otherwise legally established which may not be necessarily shown hereon.



- REFERENCES:  
 Plat Vol. 18, Pg. 570  
 Plat Vol. 14, Pg. 823  
 Plat Vol. 13, Pg. 43  
 Plat Vol. 11, Pg. 104  
 Plat Vol. 7, Pg. 196  
 Plat Vol. 6, Pg. 13  
 O.R. 143, Pg. 786  
 D.V. 233, Pg. 114  
 D.V. 137, Pg. 354  
 D.V. 166, Pg. 27

Note: After checking into available monuments and references it was concluded that the railroad spike found at the northeast corner of Lot 22 was set at or over the location of a stone monument shown to be at that corner by Plat Vol. 7, Pg. 196 and Plat Vol. 13, Pg. 43.

- Denotes a 5/8"x30" re-bar with a plastic cap stamped "WARD 7356" set.
- Denotes a 5/8" iron pin with a plastic cap stamped "BAKER 6938" found.
- ⊙ Denotes a 4" concrete tile monument with an aluminum cap stamped "G.A. STEWART INC." found.
- △ Denotes a railroad spike found.

Bearings are oriented to the north line of Lot 22 as shown in Plat Volume 13, Page 43.

Scale: 1 inch = 100 feet.



040022  
 APPROVED FOR TRANSFER ON TITLE  
 NO SUBDIVISION PLAT REQUIRED  
 (O.R.C. 711.001 & 711.131)  
 Lot(s) not for building unless  
 approved by Board of Health.  
 HOLMES CO. PLANNING COMM.  
 By AW Date 2/23/04

PLAT APPROVED

2/24/2004

Plat of Survey  
for  
KENNETH GRATE

Situated in the Township of Berlin, the County of Holmes, the State of Ohio.

Being located in Lot 22 of the Connecticut Western Reserve School Lots in the First Quarter of Township 9, Range 6 of the United States Military Lands.

INDEXED

200400029146  
 Filed for Record in  
 HOLMES COUNTY, OH  
 SALLY MILLER  
 03-02-2004 At 08:54 am.  
 SMALL PLAT 40.00  
 DR Book 18 Page 899 - 899  
 or Vol 170 pg 1181



Prepared by  
 WARD & EMLER SURVEYING, INC.  
 113 Third Street SE  
 New Philadelphia Ohio 44663-2512  
 (330) 364-5866 (voice)  
 (330) 364-1107 (fax)

I, the undersigned, do hereby state that this plat is true and correct to the best of my knowledge and belief.

Samuel C. Ward  
Professional Surveyor #7356

January 29, 2004