


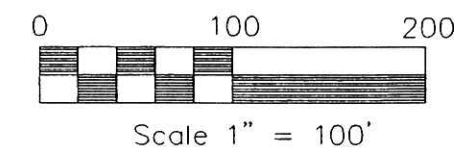
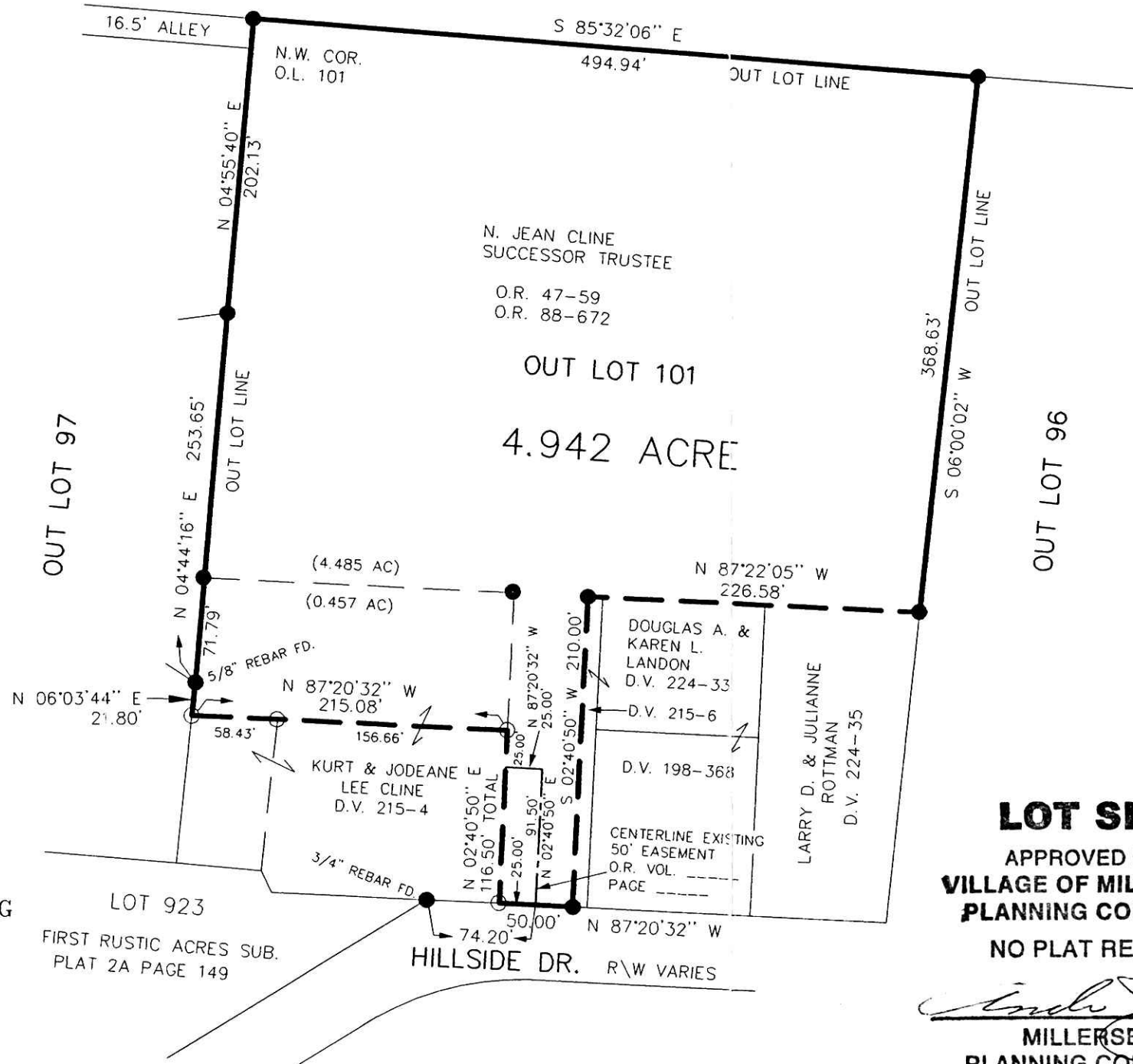
18 CASE 428
**VILLAGE OF MILLERSBURG
 PART OF OUT LOT 101**

HARDY TOWNSHIP
 N.E. QTR. SECTION 19
 T-9 N; R-7 W
 HOLMES COUNTY, OHIO
 SURVEYRD FOR KURT CLINE

200200019101
 Filed for Record in
 HOLMES COUNTY, OH
 SALLY MILLER
 11-01-2002 02:52 pm.
 SMALL PLAT 20.00
 DR Book 18 Page 426 - 426
 OR vol 127 pg 319

200200019101
 HEARTLAND
 TITLE
 MILLERSBURG,

 DONALD C. BAKER SURVEYING
 138 N. CLAY ST.
 MILLERSBURG, OHIO 44654
 PH. 330-674-4788
 FAX 330-674-6027




- 5/8" REBAR WITH I.D. CAP SET
 I.D. CAP MARKED "BAKER 6938"
- 1/2" PIPE FOUND
 UNLESS OTHERWISE NOTED

REFERENCES:

- DEED VOL. 215 PAGE 4
- DEED VOL. 224 PAGE 35
- DEED VOL. 215 PAGE 6
- DEED VOL. 248 PAGE 67
- O.R. VOL. 88 PAGE 672
- PLAT VOL. 10 PAGE 266
- PLAT VOL. 10 PAGE 466
- PLAT VOL. 12 PAGE 369
- PLAT VOL. 12 PAGE 483
- BEARINGS FROM
 DEED VOL. 270 PAGE 586



LOT SPLIT
 APPROVED BY THE
**VILLAGE OF MILLERSBURG
 PLANNING COMMISSION**
 NO PLAT REQUIRED


 MILLERSBURG
 PLANNING COMMISSION
 DATE: OCTOBER 8, 2002

I CERTIFY THIS SURVEY TO BE CORRECT
 TO THE BEST OF MY KNOWLEDGE.


 DONALD C. BAKER P.S. 6938

OCT. 9, 2002 C:\JOBS1\S-739-02

PLAT APPROVED

10/25/02