

HARDY TOWNSHIP  
3RD. QTR., LOTS 21 & 22  
T-9 N; R-7 W  
HOLMES COUNTY, OHIO

SURVEYED FOR: BETH BARNES

REFERENCES:

DEED VOL. 238 PAGE 832  
DEED VOL. 260 PAGE 9  
DEED VOL. 263 PAGE 761

O.R. VOL. 64 PAGE 633

PLAT VOL. 10 PAGE 206  
PLAT VOL. 13 PAGE 162  
PLAT VOL. 17 PAGE 738

BEARINGS FROM PLAT VOL. 17 PAGE 738

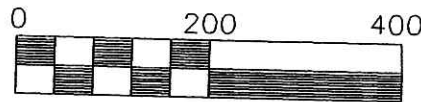
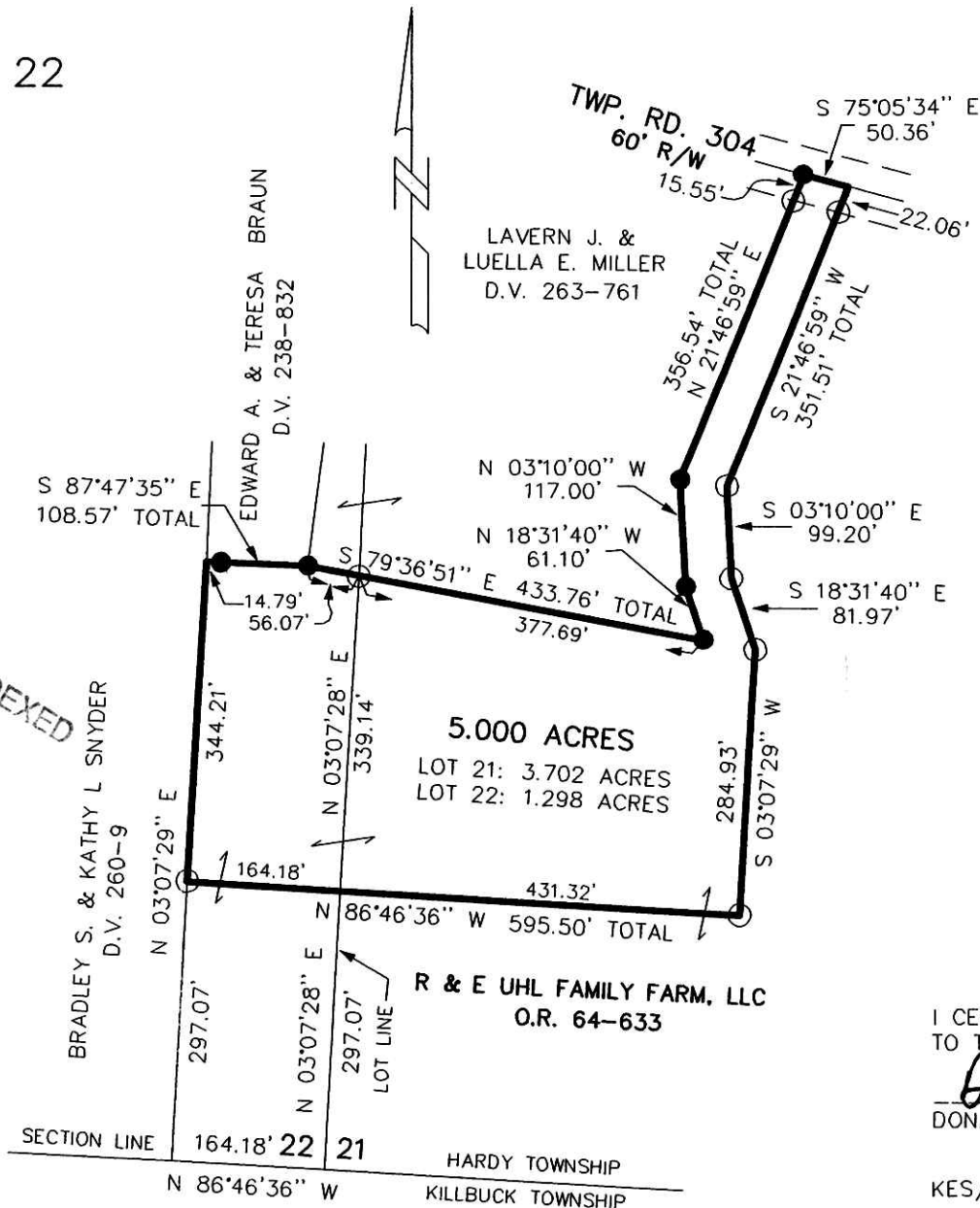
200200017594  
Filed for Record in  
HOLMES COUNTY, OH  
SALLY MILLER  
08-13-2002 02:11 pm.  
SMALL PLAT 20.00  
OR Book 18 Page 352 - 352  
OR vol 120 pg 190

200200017594  
SAMUEL M  
STEIMEL ATTY  
MILLERSBURG,

DONALD C. BAKER SURVEYING  
138 N. CLAY ST.  
MILLERSBURG, OHIO 44654  
PH. 330-674-4788  
FAX 330-674-6027

PLAT APPROVED

8/8/2002



Scale 1" = 200'

- 5/8" REBAR FOUND
- 5/8" REBAR WITH I.D. CAP SET I.D. CAP MARKED "BAKER 6938"



I CERTIFY THIS SURVEY TO BE CORRECT TO THE BEST OF MY KNOWLEDGE.

*Donald C Baker*

DONALD C. BAKER P.S. 6938

KES/ FCC DATE: JULY 2, 2002

File name: C:\JOBS1\S-453-02\ERZ