

VOL 18 Page 349

PAINT TOWNSHIP
S.E. QTR. SECTION 35
T-15 N, R-11 W
HOLMES COUNTY, OHIO

REFERENCES:

- DEED VOL. 134 PAGES 441 & 443
- DEED VOL. 140 PAGE 545
- DEED VOL. 171 PAGE 221
- DEED VOL. 256 PAGE 88
- DEED VOL. 259 PAGE 812

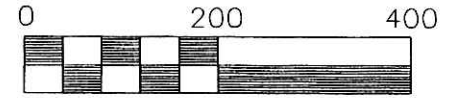
O.R. VOL. 9 PAGE 572

- PLAT VOL. 5 PAGE 11
- PLAT VOL. 14 PAGE 200
- PLAT VOL. 16 PAGE 734

BEARINGS FROM PLAT VOL. 16 PAGE 734

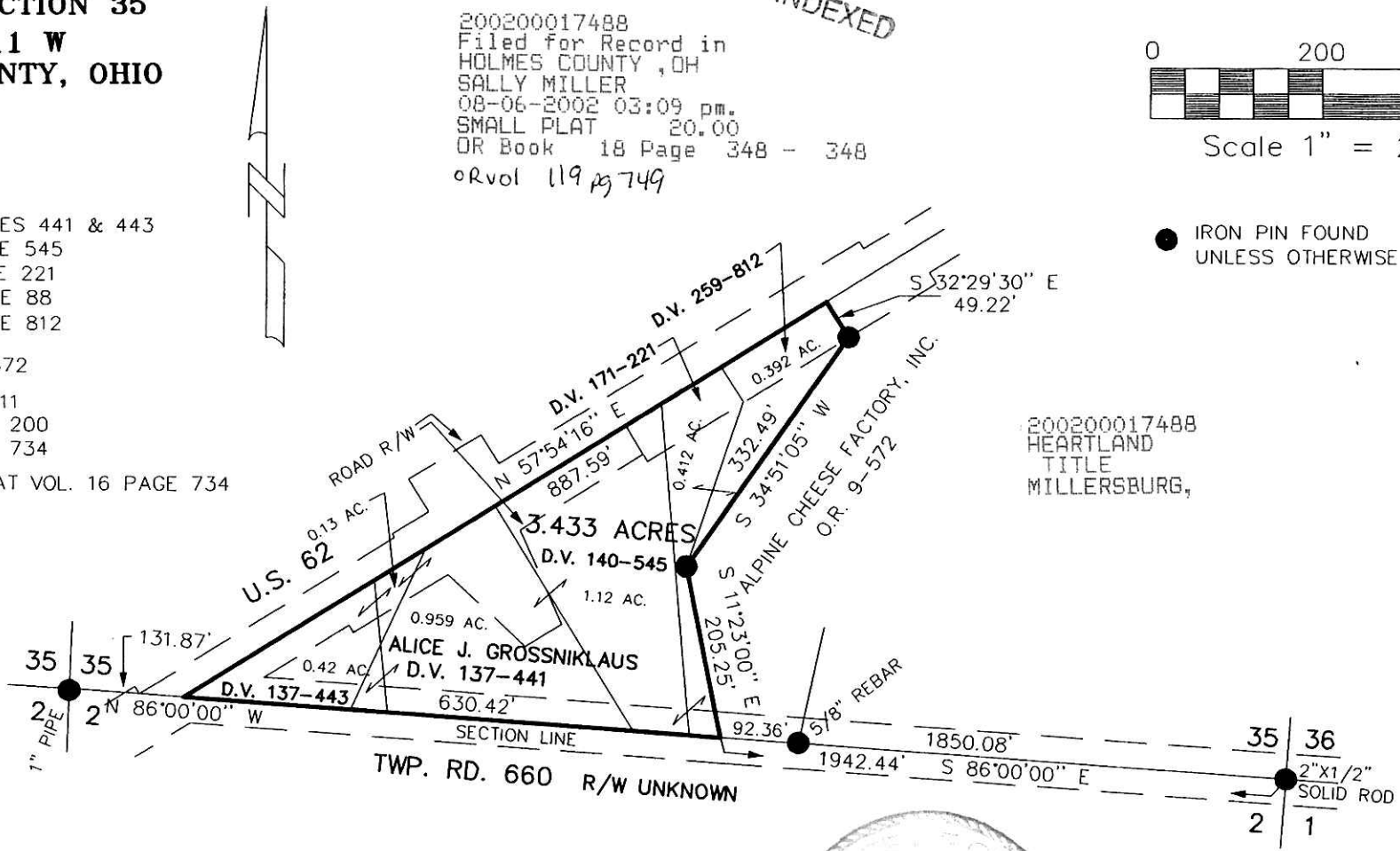
200200017488
 Filed for Record in
 HOLMES COUNTY, OH
 SALLY MILLER
 08-06-2002 03:09 pm.
 SMALL PLAT 20.00
 OR Book 18 Page 348 - 348
 OR Vol 119 pg 749

INDEXED



Scale 1" = 200'

● IRON PIN FOUND
 UNLESS OTHERWISE NOTED



200200017488
 HEARTLAND
 TITLE
 MILLERSBURG,

DONALD C. BAKER SURVEYING
 138 N. CLAY ST.
 MILLERSBURG, OHIO 44654
 PH. 330-674-4788
 FAX 330-674-6027

PLAT APPROVED
 8/6/2002 *fb*



I CERTIFY THIS SURVEY TO BE CORRECT TO THE BEST OF MY KNOWLEDGE.

Donald C Baker
 DONALD C. BAKER PS 6938

JDD/FCC DATE: JULY 19, 2002

File name: C:\JOBS\S-534-02\ERZ